



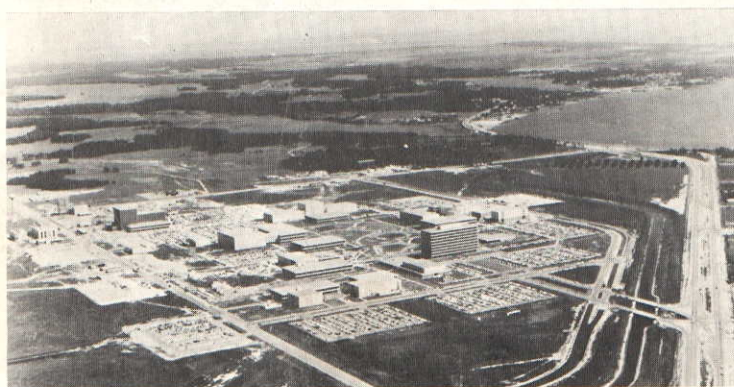
OFFICIAL
BADMINTON
MAGAZINE

BIRD CHATTER

VOL. 24

JANUARY - FEBRUARY 1965

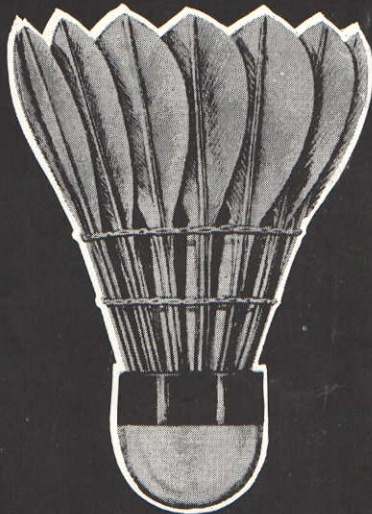
NO. 2



HOUSTON, TEXAS, THE SITE OF THE 19TH JUNIOR NATIONALS - APRIL 7-10.

See page 8 for description of photos.

**"STAMINA"
STEEL SHAFT
FRAME...**



R·S·L

TOURNEY SHUTTLECOCK

NUMBER ONE CHOICE FOR
TOP FLIGHT COMPETITION

Sportcraft

STAMINA

NUMBER ONE
*Steel
shaft*

...the
shaft
the
pros
endorse!

"Alliance Of Champions" by..... *Sportcraft*®

GENERAL SPORTCRAFT - 33 NEW BRIDGE RD - BERGENFIELD, NEW JERSEY



BIRD CHATTER



Official Publication of the
AMERICAN BADMINTON ASSOCIATION

VOL. 24

JANUARY - FEBRUARY 1965

NO. 2

American Badminton Association

President Albert O. Laubinger
Milton Bradley Co., Springfield, Mass.
Secretary William von Rosenvinge
26 Crestwood Dr., Wellesley, Mass.
Chatter Advisor... Albert O. Laubinger

BIRD CHATTER OFFICE

Pine Street, Dover, Mass. 02030
Bird Chatter is published by the American Badminton Association for its members and those interested in the game. It is issued four times per year--in November, January, March and May. Subscriptions \$2.00 per year in U.S. and Canada. \$2.50 for subscriptions outside the United States. Second class postage paid at Dover, Mass.
Editor Mary J. Moran
Pine St., Dover, Mass. 02030
Circulation Manager Frances B. Goodman 26 Sagamore Rd., Wellesley Hills, Mass. 02181
Advertising Manager Cynthia L. Dryden
3812 Beech Ave., Baltimore, Md.

Art Editor Karl Rittman
94 Tyconderoga Rd, Warwick, R.I.
Treasurer Dayton G. Nelson
21 Lake Rd., Cohituate, Mass.
Editorial Assistants

Jack van Praag, Sue Peard, Frank Devlin, Brenda Lumsden, Bob Gammons, Hans Rogind, Grace Devlin, Ellie Caffery and Dr. Joe Izen.

REPORTERS

REGION 1 NEW ENGLAND

Elsie M. Cope, 173 Westfield Ave., Ansonia, Conn.; Beryl Nelson, 14 Danklee St., Concord, N. H.; Arlene A. Hilton, 295 West Ave., Pawtucket, R. I.; Lorraine Carder, 64 Eliot Ave., West Newton, Mass.

REGION 2 MIDDLE ATLANTIC

Naomi Bender, 5 Stones Thro Rd., Windsor Hills, Wilmington 3, Dela.; Patricia Cornell, 225 Port Royal Ave., Philadelphia 28, Pa.; J.J. Hansaard, Apt. 307, 3900 Funlaw Rd., N. W. Wash. D. C. 20007; Polly Kalle, 3904 Woodbine St., Chevy Chase, Md.; Grace Devlin, Dolfield Rd., Owings Mills, Md.

REGION 3 SOUTHERN

Gloria Normann, 1821 Audubon St. New Orleans, La. 70118

REGION 4 MIDWESTERN

Wes Muthig, 9571 Westwood, Detroit 28, Mich.; Hans Rogind, 841 Farmdale, Ferndale 20, Mich.; Gloria Eli, 6351 S. Linden Rd., Swartz Creek, Mich.; Ronald McLelland, 933 Runswick Rd., Cleveland 12, Ohio

REGION 5 WESTERN

C. E. Locke, S. W. Badminton Assoc., P. O. Box 1267, Ponca City, Okla.; Ed Stuart, 5200 Holly St., Belleaire, Tex.; CWO Raymond Scott, Hdqtrs. SAC, Offutt AFB, Nebr.

REGION 6 PACIFIC

Dorothy Parsons, 4026 Vista Grande Dr., San Diego 15, Cal.; Helen Tibbetts, 13215 S. Wilton Pl., Gardena, Cal.; Mary Lee Masterson, Box 99023, Seattle, Wash.

Across the Editor's Desk

The KEY To The Success of Badminton

Xvxn though my typxwritxr is an old modxl it works quitx wxll xxcxpt for onx of thx kxys. I havx wishxd many timxs that it workxd pxrfxctly. It is trux that thxrx arx 47 kxys that function wxll knough but just onx not working makxs this diffxrxncx.

Thx organizations of thx gamx of Badminton is hxadquartxrxrd in thx I.B.F. and in this country undxr thx dirxction of thx A.B.A. Thx succxssful growth and stimulus to thx gamx is basxd on thx dxdcation, pxformancx and untiring xffort of thx workxrs in the fixld, thx committxx mxmbxrs, thx committxx chairmxn and othxrs.

I am insufficixntly informxd on thx history of typxwritxrs to know whxthxrx typxwritxrs wxrx invxntxd bxforx badminton or badminton bxforx typxwritxrs but, i do sxx a lxsson to bx drawn by comparing our organization with thx typxwritxr with thx brokxn kxy.

Thx individual workxr, committxx mxmbxr, committxx chairmxn and rxgional and national officxrs can bx likxnd to thx kxys in thx forxmxntionxd typxwritxr. Any one of whom doxs not do his part impairs thx xffort of thx xntirx organization. Thxrx arx timxs whxn it sxxms to mx our gamx of badminton is somxwhat likx this typxwritxr. Not all thx kxys arx working propxrlly.

You may say to yoursxlf, "Wxll, I am only onx pxrson. I don't makx or brxak thx gamx of badminton." But it doxs makx a diffxrxncx bxcaxx thx organization of badminton to bx xfficixnt nxxds thx activx participation of vxvry pxrson.

So thx nxxt timx you think you arx only onx pxrson and that your xfforts arxn't nxxdxd, rxmxmbxr thx typxwritxr and say to yoursxlf, "I am a kxy pxrson in this gamx and I am vxvry much nxxdxd."

THE 19TH JUNIOR NATIONALS - APRIL 7 - 10



By Dr. Joe A. Izen

The 19th Junior Nationals will be held on April 7, 8, 9, and 10th in Houston, Texas. The Downtown Recreational Center, a modern type gymnasium, air conditioned, with 8 courts, will be the site. The average ceiling height is 27', with regular condenser, 500 watt lights. There will be no coverings over the lights to prevent extra glare because it will cut down too much on the lighting. There will be glare only when looking directly into the light. The background is brown, with sky

lights and side windows. All of the sky lights will be covered and some of the side windows, to prevent glare. The floor is light brown, regular hardwood flooring, with yellow lines. Standards will be the regular tall type, some with rubber tire and concrete bases and others that will screw into the floor.

The participants will be housed in private homes with the host transporting the participants to and from the matches. The Houston YMCA's agreed to find families who will house the participants. We wish to remind all of the Junior players throughout the country that Houston is a central location for all areas, and we are anticipating a good turnout for this tournament. The Downtown Recreation Center is owned and operated by the Houston Parks and Recreation Department, and they have reserved this time for us.

There are many sights in Houston which everyone will want to see. Right at the edge of the city limits lies the San Jacinto Monument

where Texas won its independence from Mexico. Also, there is the Battleship Texas berthed at this location, and it makes a splendid tourist attraction. Remember, also, this is the space center of the U.S. A. and also of the world. We will have planned trips to these areas for the participants. The first domed stadium in the world will be opened and the first game on the last day of the tournament will be played by the New York Yankees and the Houston Colts at its dedication. One week later, the U. S. Open will be held in New Orleans which is less than 8 hours driving time from Houston. This tournament was also planned so the participants will be able to make both tournaments. The tournament is being put on by the Houston Badminton Club and sponsored by the Southwest Badminton Association. In conjunction with the Houston Park and Recreation and the Greater Houston YMCA Council.

We promise everyone who comes a good time.

SERVICE... SMASH... DRIVE... OR DROP SHOT...

you'll score more winning points off

VICTOR
GutStrings

*Only Genuine Gut
Plays Like Gut*

VICTOR SPORTS, Incorporated
5115 S. Millard Ave., Chicago, Ill. 60632

X bro POPRY* IN RUSSIA

By Mary J. Moran



Hugh Forgie, son Reg with Patty and Chuck Moran. Taken during intermission at Ice Capades Show.

X bro Popry, better known to Americans as Hugh Forgie, invited your Editor, her husband and two children, pictured above, to be his guests at a performance of the 25th Anniversary Ice Capades Show during its stint in Boston.

Being Badminton enthusiasts, we were delighted with the comedy Badminton on Ice act featuring Forgie, Shirley Marie and his amiable son Reg; but the rest of the audience evidently enjoyed it most thoroughly, judging from the tremendous ovation rendered them at the conclusion of their act.

Forgie's magnificent piece of comic invention happens to be one of the greatest sports acts of our times. The reason? Forgie is both an artist and a superlative athlete. A former international champion, famed the world over for his lightning fast wrist, exquisite timing, tactical sense and a flair for the spectacular. All these talents he has exhibited on regular Badminton Courts all over the world. He has

performed before millions on TV's Ed Sullivan show and was a featured performer at such glamorous entertainment temples as Radio City, The London Palladium (38 weeks), the Cafe de Paris in Monte Carlo, and the Casino Municipale in San Remo. He has played all the capitols of Europe on 16 Atlantic crossings and has just returned from a 7-week State Department sponsored tour of Russia.

"There had been a Badminton Tournament in Moscow the week before we arrived. I was curious about the type of competition over there. After considerable screening by a series of officials and interpreters, our trio (son Reg Forgie and Hugh's talented partner, Shirley Marie) were finally invited to visit a 50-year old Badminton Club. Reg and Shirley were paired against two very young Russians and lost in a very close match. Then Shirley and I played a match against them and managed to beat them by three points. They could really run and

were not used to being held, however, their backhands were not too strong. After the matches, we discovered that our opponents were the Number 2 and Number 3 players in Russia. Number 1 was in the audience, but did not participate."

"The refereeing was the best I've ever seen," said Mr. Forgie, to the President of the Moscow Badminton Association. "They are very anxious to learn and are very eager. There is a lot of recreational Badminton being played everywhere. Their birds and racquets are from India."

We had a wonderful time and had all the freedom in the world. They are a very eager and well organized group. They are learning the game from Danish books translated into Russian.

Also accompanying Hugh, Shirley and Reg, were wife Janet, and 14 year old daughter Derry; who also enjoyed the experience immensely.

* X bro Popry is Hugh Forgie in Russian.

The National Scene

by Jack van Praag, Chairman, National Badminton News Committee



Many thanks to Dr. John Poong for two large and fine Badminton articles which appeared recently in the *San Francisco Chronicle* and the *San Francisco Examiner*. According to the *Associated Press* dispatch it was revealed that deposed Premier Nikita Krushchev of the Soviet Union possessed a talent that had not generally been known. In reporting comments by author Norman Cousins, who is also editor of the *Saturday Review*, Krushchev was a top-notch Badminton player. Cousins described the interview at the Premier's vacation retreat on the Black Sea and said he found Krushchev was showing signs of severe strain even then. But his physical health seemed robust at that time. To demonstrate his prowess, Krushchev announced that he played Badminton twice a day and then challenged Cousins to a game. "I was astounded at the speed of his reflexes and his agility," Cousins said. "When we stopped I observed that he was not flushed or winded." "I play Badminton twice a day," Krushchev told Cousins. "Early morning and late afternoon. Then a swim and a rubdown." Our readers will probably recall that last year we reported in *Bird Chatter* that world wide coverage was given by the various national and international news services to the Badminton game that was played by then Premier Krushchev and United States Secretary of State, Dean Rusk, at Krushchev's hide-away estate at Gagra, on the Black Sea. The story and large pictures of the event appeared in leading newspapers throughout the world. Much interest was shown by readers everywhere. Certainly a wonderful piece

of news and publicity for our favorite game.

* * * * *

The Pasadena, California *Independent-Star News* published two full pages listing a Fall-Winter Recreation schedule and program for all Pasadena. Under the leadership of an active Recreation Commission with representation from the Board of City Directors and the Board of Education, a full and varied program is offered the public. This co-ordinated department is financed by the Pasadena Unified School District, the City of Pasadena and the County of Los Angeles and is administered by the Pasadena Board of Education. One of the big events is the Annual Southern California Junior Badminton Championships, which will be held May 14-15, 1965 at Pasadena City College. A Badminton clinic for Juniors with free instruction and supervised play is offered. Boys and girls 18 years of age and under are eligible. Advance registration opens January 4th at Headquarters with the first meeting taking place Friday, January 29th at the Pasadena City College women's gymnasium. Badminton activities for both adults and juniors has figured high for many years in the recreational programming in Pasadena and probably helps account for the high standard of play in this area.

* * * * *

Increased television outlet interest in Badminton is shown in a letter received from Triangle stations, Television and Radio Division, of Philadelphia, requesting information regarding the Badminton program with accent on youth and family participation in sports and games. Possible use of the information sent Mr. Grambo, Producer, for use on his "The Wonderful Age of Play", was indicated. The fact that youth and family participation play a strong part in our Badminton program and that whole families participate on various levels of play and degrees of skill was of great interest to the producer. Here's hoping that Badminton will play a prominent part in one of the forthcoming programs.

* * * * *

Continued evidence of the interest in Badminton throughout the United States is the frequent re-

quests received for the ASHAWAY PRODUCTS very fine booklet "Your Guide To Better Badminton". This booklet is requested from the ABA by students and physical education majors throughout the country. 100 copies were requested by St. Michael's College at Santa Fe, New Mexico to be distributed at their booth at a state wide convention at the University of New Mexico at Albuquerque. This will certainly do a great deal to create and stimulate interest in Badminton in this area.

* * * * *

As has been the custom for a number of years, the names of National Badminton Champions in each event will be listed in the *New York Times* annual page of Champions in all sports. The *Times* will also shortly publish the first edition of a Sports Almanac which will thereafter be published annually. Information has been furnished the *Times* so that Badminton may be covered in depth.

* * * * *

Many letters have been received from various parts of the country and from some of the armed forces athletic officers for clarification of the change in the "wood shot" rule. The following letter from John P. Hansel, of Riverside, Connecticut is interesting and reflects one point of view --- "I am writing you with regard to clarification on the rule allowing wood shots. A few years ago, I organized a group of B and C players, and we carried on with great success up until last year, when we ran afoul on the new rule on wood shots. Not being experts, we hit a good percentage of wood shots, and have always disallowed them.

"Last year, someone in the group advised that the new rule provided that wood shots could be counted, and we started playing according to this rule. The result was that most players lost their incentive to improve their game, and the overall quality of play declined considerably. In addition, considerable dissension arose as several members of the group wanted to go back to the old rule, feeling that a more honest game resulted."

"I am writing for your advice, both as to the actual wording of the

(continued on page 22)

The International Scene

by Jack van Praag, Chairman, National Badminton News Committee

Badminton is again honored with a set of two commemorative postage stamps issued by Indonesia to honor the successful defense of the Thomas Cup by Indonesia at Tokyo last May. The two stamps of 25 sen and 50 sen denominations both picture the Thomas Cup and are inscribed "Badminton World Championship 1964-1967". This gesture by the Indonesian government again points up how terribly important it is to them that the Cup be retained at all costs. As Editor Herbert A. E. Scheele points out in a fine article in the November issue of "The Badminton Gazette" he was greatly impressed during his visit to Djakarta with the reverence with which the Thomas Cup was treated. It was in a specially constructed glass case with the Indonesian colors on its handles. This impressive sight stood in the entrance hall, visible from the street, of the former home of the Dutch Governor-General at the time when Java formed part of the Dutch East Indies. As Mr. Scheele states, "Clearly, Indonesians regard the trophy as their finest sporting conquest, which of course it is. It stood there, in what was possibly the finest position in the whole city, guarded by two soldiers prior to its departure for Tokyo, whether the national team had already departed. It is probably back there now". "Editor Scheele was also greatly impressed with the number of fine halls and general facilities available to anyone who shows the slightest promise for the future. Just a short distance from the center of Djakarta, the largest city in Java and the capital of Indonesia, is the magnificent Senajan Sport Palace which was used for the defense of the Thomas Cup three years ago and which is the scene of all important matches and tournaments in the country. Senajan seems to be one great sporting suburb with stadia galore for all manner of athletic activities. It is a veritable "Olympic Village" and there are numerous cottages and flats for residential purposes. Among the permanent residents is Miss Minarni, Indonesia's leading Badminton lady, who will be remembered as a member of the Indonesian Uber Cup Team which played in the Inter-Zone Ties in the United States in 1963. Mr.

Scheele goes on to say that all sports administration in Indonesia is under the jurisdiction of the Indonesian Sports Ministry which is reputed to employ as many as 600 people. Each different sport has its own national organization which works under the Ministry. It is said that the Ministry has organized a sort of "Five Year Plan" by which it is hoped that Indonesia will become among the five top nations in the world in all branches of sport which appeal there within that period. Certainly the facilities required to attain this goal are there.

* * * * *

A recent letter from Margaret Barrand, English International, reveals that she is looking forward to her third successive visit to the United States to defend her U. S. Open Mixed Doubles title, first won in Baltimore in 1963 from the Alstons in a memorable finals match, and retained at San Diego in 1964 when Joe Alston was unable to play the final match due to a pulled leg muscle. It will be interesting to see what happens at New Orleans in April. From all indications the local Tournament Committee is going "all out" to line up talent that will provide some fabulous matches and play. Margaret stated that Ursula Smith has been chosen to play squash for England against Wales. Quite an honor for Ursula. She plays Badminton one night and squash the next. She is also a top notch shot putter and has been engaging in this activity all summer. Another example of proficiency in one sport not precluding proficiency in other sports. Quite often the question arises as to whether or not engaging in one racket sport interferes with another. Here is one answer. Another that comes quickly to mind is Margaret Varner who has the unique distinction of having represented her country on International teams in three racket sports—Badminton, Tennis and Squash and has held National Championships in all three sports. Dr. Dave Freeman, Judy Hashman, Wynn Rogers and Marten Mendez are some other names of players who have excelled in more than one racket sport. The South African Badminton Union has invited a repre-

sentative England team of three men and three ladies to tour the Union during the English summer months of 1965. There is a strong possibility that Margaret will make the six weeks tour with the English team. This will be the fourth time that England will have sent a team to the Cape (1948, 1953 and 1957). Many readers will remember that in 1955 the United States was invited to send a team to South Africa. The American team, composed of John Leib, Thelma Welcome, Bill Berry, Abbie Rutledge, Don Davis and Margaret Varner (captain) won all five International Test Matches as well as all nine exhibition matches on their South African Safari. We will look forward to seeing Margaret again at New Orleans.

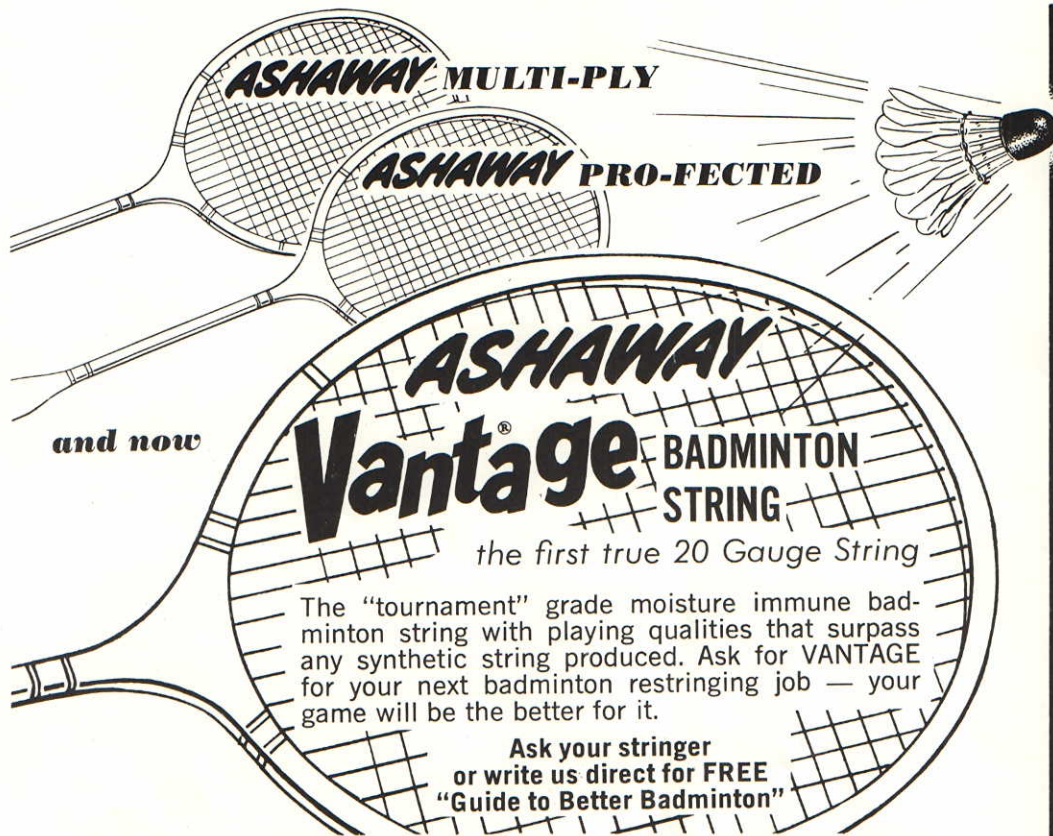
* * * * *

Judy Hashman, in a very enjoyable and newsy letter, writes that she is enjoying the mild fall weather at her lovely English home in Berkshire. She is eagerly "infanticipating" and the new arrival, (or arrivals, if rumors may be believed), should have made his, her or their appearance by the time these lines are read. Judy hopes to be in shape for the All-England Championships and she, too, is looking forward to competing at New Orleans. With Judy out of competition for the season, Ursula Smith is coming into

(continued on page 20)



PUSH BIRD CHATTER



and now

ASHAWAY Vantage[®] BADMINTON STRING

the first true 20 Gauge String

The "tournament" grade moisture immune badminton string with playing qualities that surpass any synthetic string produced. Ask for VANTAGE for your next badminton restringing job — your game will be the better for it.

Ask your stringer
or write us direct for FREE
"Guide to Better Badminton"

ASHAWAY PUTS A BETTER GAME IN YOUR FRAME

Distributed through Leading Athletic Goods Manufacturers

ASHAWAY PRODUCTS, INC.
Ashaway, R. I.

ASHAWAY VANTAGE

In 20 gauge for Badminton; also in tournament gauge for Tennis. Approximate Badminton stringing cost \$7



(NATURAL)

ASHAWAY PRO-FECTED

In 20 gauge for Badminton; also in 15 or 16 gauge for Tennis. Approximate Badminton stringing cost \$6



(EBONY SPIRAL)

ASHAWAY MULTI-PLY

In 19 gauge for Badminton; also in 15 gauge for Tennis. Approximate Badminton stringing cost \$4



(GREEN CROSS)



ON THE COVER: *Top Left:* One of the most famous pageants in Texas is the annual Houston Live Stock Show and Rodeo, which draws more than 300,000 persons each year. The Sheriff's Mounted Posse opens the rodeo with an exhibition of daring and skillful horseback-riding. *Top Right:* "Houston," once said a civic leader, "will be a great city if they ever get it completed." They haven't completed it yet; and trying to keep in their files photographs which are not outdated is a difficult task for those who attempt to record the city's progress. This aerial photograph of the downtown area, taken only a few days ago, may be outdated tomorrow. Houston, with a population of more than 1.4 million persons, is the nation's sixth largest city. *Bottom Left:* The Manned Spacecraft Center of the National Aeronautics and Space Administration is the home of the Astronauts and the heart of the nation's effort to place a man on the moon. The estimated cost of MSC construction is approximately \$150 million. Buildings occupy 200 of the 1600 acres, with the remaining land for tests and expansion. Here NASA is training Astronauts, and designing, developing, and evaluating and testing spacecraft. Plans call for all manned space flights to be controlled from Houston. The MSC is 22 miles from downtown Houston, near Clear Lake. *Bottom Right:* A new superlative has been created with the construction of the Harris County Domed Stadium. Designed to accommodate more people than any other indoor facility in the world, the completely air conditioned stadium will seat 60,000 for conventions, 46,00 for baseball, 53,000 for football and 66,000 for boxing. The seating can be arranged to accommodate any type of event or meeting from rodeos to national political conventions. The 230-acre grounds will provide parking space for 25,000 automobiles. Cost of the entire stadium project is an estimated \$31.6 million.



Leprechaun Letter



from Sue

As inevitably is the case in this issue, tournament results account for the major portion of badminton news. However, there is news also of two new halls being built specifically for and by badminton clubs in Ireland. The first project is actually a re-Building one. Fire destroyed the court of the Gorey Badminton Club in County Wexford and the club members, by their own hands, rebuilt the hall, a true labor of love.

The second new hall is not yet completed, but promises to prove itself very popular as soon as it is available. This is a two-court hall in Dundalk, the mid-way point between the two main badminton centers of the country, Dublin and Belfast. The Dundalk Association is extremely active and are hampered at the moment during tournament time by having two courts approximately one mile apart, not the easiest thing for scheduling matches. With the new hall they should become the logical scene of international team try-outs and unrestricted tournaments.

A special Christmas coaching class was held for children between 10 and 16 in Dublin. Since many of the schools have Saturday morning classes the time available for badminton classes is curtailed. However, the vacations are long at Christmas and Easter and the former is an ideal time to provide

concentrated daily instruction. The junior program is so large in England that entrants will now have to play in a qualifying tournament in order to get into the main draw for the English junior championship. This tournament was inaugurated after the first U.S. Junior Championship, but appears to have eclipsed it in number of entries, at least in the older division.

A boom in adult league play is taking place in Dublin where 1344 players are taking part in this season's league matches in this city and its surrounding area.

The Welsh Team, after 6 seasons, played an International Match - in fact four in rapid succession. Their team toured the Continent beating Switzerland and France, and losing to the Netherlands and West Germany.

* * * * *

One of the earliest tournaments to provide results of interest to *Bird Chatter* readers, was the Valbys tournament in Denmark where an 18 year old, Svend Andersen, defeated the All-England runner up, Henning Borch, in the semis, and took the second game from Erland Kops in the finals. In a later tournament K. A. Neilsen and Borch repeated their All-England final 3 set match, Neilsen winning 17-16 in the third game. Ulla Rasmussen won the ladies' singles, and with her sister, Karin Jorgensen, the ladies doubles over two extremely promising juniors. Mike Kollé, who lived in D. C. for some time and played in the East Coast tournaments, is still very active and playing tournament badminton.

In the two major English tournaments to date Ursula Smith has taken the measure of Angela Birstow, while Scotland's Bob McCoig, recently the proud father of a baby daughter, has been beating the English players. Interest is further heightened by the arrival in England of Richard Purser of New Zealand, his country's top player, who took Henning Borch to three games in the Northern Championships in Birkenhead. Tony Jordan and Jenny Pritchard, the current All-England mixed Champions, have been undefeated so far this year.

In the only major Irish tournament at the date of writing Inter-

nationals Winston Wilkinson and Yvonne Kelly each won three events. Mary O'Sullivan, Bryan and Sue Peard are both unavailable for the rest of the season.



ABA RULES BOOK

New 1964 Edition

Latest Official Laws
Hints on basic stroking
Simple explanation of common faults, etc.

1-4 copies—25¢ each postpaid
 5-24 copies—15¢ each postpaid to one address
 25-99 copies—10¢ each postpaid to one address
 100 copies and over—5¢ each postpaid to one address

Special rates for magazine dealers and for suppliers using quantities
 Fill out blank and send funds to

DONALD RICHARDSON
 20 Wamesit Road
 Waban 68, Mass.

Please send _____ copies of Official Rules Book

Name _____

Address _____

Amount enclosed _____

Bird Chatter Subscription Blank

Published 4 Times Per Year
 In November, January, March and May
\$2.00 in U.S. and Canada
\$2.50 elsewhere

Special Rates to Clubs Subscribing 100%
 For Information, Write to
 the Circulation Manager

Please send *Bird Chatter* postpaid

To: _____
 Please Print

Address _____

City _____ Zone _____ State _____

Mail this form with your check to: **Circulation Manager**
 Frances Goodman
 26 Sagamore Rd.
 Wellesley Hills, Mass.

Make checks payable to Bird Chatter

Flying Feathers

Feathers are flying at a minimum this month!!! How's about some "newsy" bits from other places in addition to those from our faithful reporters of the West, Mid-West, and Upper New York areas!!! . . . Tyna Barinaga and Caroline Jensen were among the 7 outstanding sports figures presented a Sport Achievement Award for 1964 by station KIRO-TV in Seattle recently. Tyna now attends Arizona State University and both girls have been invited to play in the Canadian Open Tournament in Edmonton, Alberta in April. . . Mr. and Mrs. E. Domzal, Mr. and Mrs. W. Muthig, and Mr. and Mrs. Rath recently chaperoned a group of Michigan Juniors who journeyed across the border to Kitchener, Ontario for an invitational tournament. . . On Christmas day, Cynthia Dryden of Baltimore and badminton announced her engagement to Liam Kelly of Boston. . . Congratulations to Al and Lois Woodward on the birth of their son on Christmas Eve. . . An addition to the Hashman (Judy Devlin) family is due this month. . . Have learned that Rosine Jones is also expecting. . . Tom Trelloggen was married in November. . . New addresses for Tahir Karamat and George Le Franc: Ti states he is seriously planning to go to Europe for some international tournaments and also keen to come to the states once again. . . He can be reached at 15/1/c Mohd Ali Memorial Co-operative Housing Society, Karachi, Pakistan. Pvt. George Le Franc is now stationed in Germany. His address is "U. S. 55773007, D Trp. 3rd Sqn., 12th Cav., APO N. Y. 09039. . . We regret to report the death of Gordon Kunz of the Needham (Mass.) Badminton Club in December. Gordie has been a good friend to us all and an avid badminton enthusiast for the past 12 years. . . Note from So. Cal. Badminton Association Newsletter: "Diana Moore did a very nice job holding a raffle during the So. Cal. tourney. \$67.50 was the result, all of which goes into the SCBA Jr. Fund." How's about a few more details? This sounds great and our



own Jr. fund as well as many others, I'm sure, could use a good boost like this. . . Hats off to Long Beach for coming up with a unique award at a recent tournament. They secretly kept track of the times each individual refereed and presented a trophy to the most cooperative person. The unsung hero in this instance was Bill Johnstone of San Diego, closely followed by Ed Spruill and Ed Harris. . . Among the NY badminton players who distinguished themselves on the tennis courts off season, we find Jim Lynch, Bob Traquair, Mike Albano, Bob McKinley, Brian Cohen, Carl Weissgerber, Bea Massman, Ethel Marshall, and Bob May. Carl is now attending MIT and Bob is at Notre Dame. Both boys hope to pursue their racket sports at their respective universities. . . Badminton has added two more enthusiasts in the Boston area who are well-known in other sports fields - Egon Zimmerman, Olympic skier and husband of Penny Pitou, and Jim Luscatoff, former Celtics Basketball star. . . Interesting sidelight on Channarong Ratanaseangsuang - he also plays table tennis, excels in soccer and track, and loves good music like Mantovani and Percy Faith. At present Chan is both U. S. and Canadian Open

Champ and captured the Mixed Doubles crown in Mexico's 1st National Open Tournament with Judy Adamos of San Diego. . . The cute photo on this page was taken recently when the Hinkle-Gammons families joined forces for steak and champagne to celebrate the end of 2 years of ABA service for the dads. The cake, complete with all necessary strings, was the creation of Bob's daughter and Phil's son. . . We understand there is a race going on in Wisconsin badminton circles between Robert Brandle and Mary Theisen to see who can break the most rackets!! . . . We'll bet Acapulco, Mexico, will never be the same again after the tennis-badminton duo of Joan Sullivan and Ginny Connolly visit there in February. . . .



**NEXT DEADLINE
FOR
BIRD CHATTER NEWS
FEBRUARY 20
1965**



Featured in the famed Ice Capades Badminton Act

That's Hugh Forgie*, in the clown get-up! Now in his 30th year as a badminton professional, he has appeared before more than 40 million people in person and probably a 100 million on TV and in movies throughout the world. Shirley (Mans) Marie, a ranking U. S. badminton player, and Hugh's son, Reg, join Hugh in the "Badminton on Ice" act to help make the Ice Capades the greatest ice show in the world.

"In our act there's no time to change rackets—the show must go on," says Hugh Forgie. "That means an absolute minimum

*Member of Bancroft's Advisory Staff

America's Only Manufacturer of Badminton Rackets

of breakage and an absolute maximum of good playing qualities. I've tried them all, and the Bancroft racket is my number one choice in the world today."

Super Winner®

A racket for champions! Light in weight, with superb balance and feel yet no sacrifice of strength. Ash laminated bow construction. Steel shaft. Genuine tan gold-lined leather grip. \$18 strung Pro-Fected Nylon. Bancroft Sporting Goods Co., Pawtucket, R. I.



Bancroft RACKETS

Rackets • Presses • Shuttlecocks • Complete Sets

TO THE LADIES COMING TO NEW ORLEANS and / or April In America's Paris



By Ellie Caffery
Hospitality Chairman

Like in Paris, New Orleans in the Spring is wonderful! — — — but it's also unpredictable. So to help me help you prepare your New Orleans wardrobe I called the Weather Bureau, Department of "Climatology" no less, and these are the authentic statistics:

Expected high for April 78° - 79°
Expected low for April... 59° - 60°
Coldest April day since 1885 - 41°
Warmest April day since 1885 - 91°
There will be:

7 days of rain
5 days of thunder
1 day of fog

Now the prime fact with which I wish to impress you is that in New Orleans all these weather conditions can happen in one day. Therefore, in general your wardrobe should be principally light clothes (cottons and sheer wools), a warmish coat and a raincoat.

We have a saying that New Orleans is the city that care forgot! In view of this be ready to forget those "on the court" differences and party with us at the appropriate times. Our party schedule follows:

Tuesday, April 13th, 5-7 P.M.

Welcoming cocktail party at the Caffery's house. This will be an informal affair, and we'll hope to

see you in just any ole thing — — including traveling outfits and badminton playing clothes (the gym is close by and will be available for practice).

Friday, April 16th, 10:00 A.M.

Tour of the New Orleans harbor on the city's official yacht, the GOOD NEIGHBOR.

Dress for this will depend on the weather that day. There being a rather "latin" attitude toward dress, hometown New Orleanians do not wear slacks or shorts in the downtown area. However, in the case of bad weather anything goes. In general, though, you may feel uncomfortably "tourista" if wearing slacks while sightseeing. En route to the gym is of course another matter.

Incidentally, this day being Good Friday of Easter Week, you will certainly notice the devoutness of the New Orleans citizenry. Many lovely churches including the Basilica of St. Louis in the heart of the French Quarter will be open all during the day and night for you to visit.

Saturday, April 17th, 10:30 A.M.

Brunch and official meeting of ABA at the Monteleone Hotel.

The Monteleone Hotel, which will serve as tournament headquarters,

is in downtown New Orleans — — one block from Canal Street (our shopping center) and right on the edge of all the interesting things to do and see in the French Quarter. Antiques, exotic foods, and fantastic entertainment are all within a stone's throw, or shall we say a shuttlecock's wack. The sidewalks of the Vieux Carre (French Quarter) are paved in flagstones to a large extent. Picturesque as the stones are, a sightseer is more comfortable when wearing walking shoes!

Saturday, April 17th, 9:00 P.M.

Dance at Monteleone Hotel.

We hope to make this a dance where everyone really dances. We've hired Rene Louapre (New Orleans' Lester Lanin) to help unstiffen all of our badminton weary (whether playing or spectating) bodies. A short cocktail dress will be the most appropriate and probably the most preferred costume. But this being a "dressy" town, there may be a few long formals in evidence, so if you've been looking for an opportunity to wear one, here's your chance. At midnight we will serve a traditional creole supper, to end our festivities with a truly New Orleans touch.

Let us know if you have any unanswered questions. We're looking forward to seeing you all.

MONTELEONE HOTEL RESERVATION

Please reserve for my occupancy beginning April, 1965,
Departing April, 1965 the following accommodations:

Single Room	\$ 8	\$ 9	\$ 10	\$ 12
Double Room		12	14	16
Twin Bed Room		14	16	18

(Circle your choice)

Name (please print)

Address

Note: Check out time is 6 P.M. Rooms will be held 7 P.M. only unless a later time is specifically requested. No deposit is required for these reservations.

Other excellent accommodations are available throughout the city. If for some reason you wish to find special accommodations, the Hospitality Committee will be happy to assist in finding a spot to fit your needs.

SEE

“YOU ALL”

IN NEW ORLEANS

mail your entry now!

12th UNITED STATES OPEN AMATEUR CHAMPIONSHIPS

OF THE AMERICAN BADMINTON ASSOCIATION

ENTRY APPLICATION

To be mailed, with entry fee, to: **TAYLOR CAFFERY**
 1805 National Bank of Commerce Building
 New Orleans, Louisiana 70112

NAME _____ PHONE _____

ADDRESS _____

NUMBER	STREET	CITY	STATE	ZIP CODE
<input type="checkbox"/> MEN'S SINGLES		<input type="checkbox"/> LADIES' SINGLES		<input type="checkbox"/> SENIOR MEN'S DOUBLES
<input type="checkbox"/> MEN'S DOUBLES		<input type="checkbox"/> LADIES' DOUBLES		Partner.....
Partner		Partner		<input type="checkbox"/> SENIOR MEN'S SINGLES
<input type="checkbox"/> MIXED DOUBLES		<input type="checkbox"/> SENIOR LADIES' DOUBLES		<input type="checkbox"/> SENIOR MIXED DOUBLES
Partner		Partner		Partner

For and in consideration of the benefits accruing to me as a result of the sponsorship of the U.S. National Badminton Tournament by the New Orleans Badminton Club, Inc., at Tulane University, the adequacy and sufficiency of which consideration is herewith acknowledged, I do hereby waive and release any and all rights and claims for damages which may accrue in my favor against Tulane University, The Administrators of the Tulane Educational Fund and/or the New Orleans Badminton Club, Inc., and their respective officers, agents and representatives, for any and all injuries that I may sustain in any manner whatsoever arising out of or in anywise connected with the tournament aforesaid.

For the same consideration I hereby give the New Orleans Badminton Club, Inc., and/or the American Badminton Association, and each and every licensee or contractee of either or both of them, including television and/or motion picture companies or concerns, their affiliates and subsidiaries, full television and motion picture rights, including full power, permission and authority to film or video tape me during any and all phases of the tournament, including during all matches, personal interviews, presentations, ceremonies or otherwise, and to use and reuse the product thereof, together with any commentary, narration or comment thereon for any and all commercial, news or other purposes, together with the right to transfer and grant their rights to others, all subject to no payment to me therefor.

According to the Rules and Regulations of the National Badminton Association of which I am a member, I am an amateur in good standing.

 SIGNATURE OF ENTRANT

CERTIFICATION

I hereby certify that the above entrant is a member of the

Badminton Club
 SIGNATURE OF CLUB SECRETARY

Endorsed by the Badminton Association
 SIGNATURE OF ASSN. SECTY

I hereby certify that the above entrant is an individual member or Senior Tournament Card Holder of the American Badminton Association.
 ABA MEMBERSHIP REPRESENTATIVE

ENTRY FEES: \$5.00 per person per event. Make checks payable to Taylor Caffery.

IMPORTANT: Entry applications must be properly endorsed and accompanied by full entry fee or entrant's name will not be placed in the draw.

ENTRY DEADLINE: MARCH 17, 1965

JUNIOR ENTRIES: Juniors under 16 as of April 14, 1965 must mail their entry to Mr. Stanton Hales, 18 Mellen Street, Cambridge, Mass. before March 5, 1965, for approval of the Junior Activities Committee and then by the ABA Executive Committee.

SENIOR ENTRANTS must have reached their 40th birthday before April 14, 1965.

12th UNITED STATES OPEN AMATEUR CHAMPIONSHIPS

OF THE AMERICAN BADMINTON ASSOCIATION

ENTRY APPLICATION

To be mailed, with entry fee, to: **TAYLOR CAFFERY**
 1805 National Bank of Commerce Building
 New Orleans, Louisiana 70112

NAME _____ PHONE _____

ADDRESS _____
 NUMBER STREET CITY STATE ZIP CODE

- | | | |
|--|---|---|
| <input type="checkbox"/> MEN'S SINGLES | <input type="checkbox"/> LADIES' SINGLES | <input type="checkbox"/> SENIOR MEN'S DOUBLES |
| <input type="checkbox"/> MEN'S DOUBLES | <input type="checkbox"/> LADIES' DOUBLES | Partner..... |
| Partner | Partner | <input type="checkbox"/> SENIOR MEN'S SINGLES |
| <input type="checkbox"/> MIXED DOUBLES | <input type="checkbox"/> SENIOR LADIES' DOUBLES | <input type="checkbox"/> SENIOR MIXED DOUBLES |
| Partner | Partner | Partner |

For and in consideration of the benefits accruing to me as a result of the sponsorship of the U.S. National Badminton Tournament by the New Orleans Badminton Club, Inc., at Tulane University, the adequacy and sufficiency of which consideration is herewith acknowledged, I do hereby waive and release any and all rights and claims for damages which may accrue in my favor against Tulane University, The Administrators of the Tulane Educational Fund and/or the New Orleans Badminton Club, Inc., and their respective officers, agents and representatives, for any and all injuries that I may sustain in any manner whatsoever arising out of or in anywise connected with the tournament aforesaid.

For the same consideration I hereby give the New Orleans Badminton Club, Inc., and/or the American Badminton Association, and each and every licensee or contractee of either or both of them, including television and/or motion picture companies or concerns, their affiliates and subsidiaries, full television and motion picture rights, including full power, permission and authority to film or video tape me during any and all phases of the tournament, including during all matches, personal interviews, presentations, ceremonies or otherwise, and to use and reuse the product thereof, together with any commentary, narration or comment thereon for any and all commercial, news or other purposes, together with the right to transfer and grant their rights to others, all subject to no payment to me therefor.

According to the Rules and Regulations of the National Badminton Association of which I am a member, I am an amateur in good standing.

 SIGNATURE OF ENTRANT

CERTIFICATION

I hereby certify that the above entrant is a member of the

Badminton Club
 SIGNATURE OF CLUB SECRETARY

Endorsed by the Badminton Association
 SIGNATURE OF ASSN. SECTY.

I hereby certify that the above entrant is an individual member or Senior Tournament Card Holder of the American Badminton Association.
 ABA MEMBERSHIP REPRESENTATIVE

ENTRY FEES: \$5.00 per person per event. Make checks payable to Taylor Caffery.

IMPORTANT: Entry applications must be properly endorsed and accompanied by full entry fee or entrant's name will not be placed in the draw.

ENTRY DEADLINE: MARCH 17, 1965

JUNIOR ENTRIES: Juniors under 16 as of April 14, 1965 must mail their entry to Mr. Stanton Hales, 18 Mellen Street, Cambridge, Mass. before March 5, 1965, for approval of the Junior Activities Committee and then by the ABA Executive Committee.

SENIOR ENTRANTS must have reached their 40th birthday before April 14, 1965.

SEE

“YOU ALL”

IN NEW ORLEANS

mail your entry now!

A MESSAGE ON RANKING

By Grace I. Devlin, National Ranking Chairman

No Ranking list has ever pleased absolutely everybody, of this I am sure, but perhaps a word or two on how the ranking lists are compiled will help any who have ever been dissatisfied to understand the problems involved. Also, let me state here and now, that over the last few years, we have had very very few complaints.

To begin with the Rankings are made by a Committee, chosen as much as possible from across the country and, if possible, from those not involved in the Rankings. Then, Rankings are entirely statistical, based on the results of Sanctioned Tournaments ONLY, and reflect no person's opinions, only the way they have interpreted the results. Thirdly, under the present rules the Chairman has no vote unless a tie vote has to be broken; and fourthly, and MOST important, ONLY RESULTS FROM SANCTIONED TOURNAMENTS ARE USED.

Therefore, the important parts played by the various Tournament Chairmen cannot be over emphasized, for they must obtain a Sanciton and then send in the results of that tournament to the Ranking Committee Chairman. Last year three Tournament Chairmen failed to send in their results and, because we did not have these figures, the Mixed Doubles Rankings are not entirely correct. Dick Gorman and Cynthia Dryden should have been placed at No. 9, but because we did not have their win over Wayne Schell and Daphne First they received no Ranking at all.

The work of compiling the statistics for the Committee to work with is greatly simplified if the Tournament Chairmen will send in the results, typed or printed or even very clear longhand, on the official form AS SOON AS POSSIBLE after the tournament is finished. I keep these results on a

card index under the names of the various players and pairs and, if I can keep my files up to date, then, at the end of the season I have only a typing job and do not have to spend hours and hours making up the records, for they have been done throughout the season.

Your cooperation will be appreciated in the future.

HOW TO GET TO NEW ORLEANS

Hans Rogind, Secretary of MBA, is organizing a "Badminton Coach" on the "City of New Orleans" for 20 or more persons at the cost of \$41.65 round trip. Leaves Chicago at 7:45 a.m. CST April 13th and arrives New Orleans at 12:25 a.m. CST April 14th. Contact Hans at 28925 Millbrook Road Farmington, Michigan

A Magazine That Covers the World

★
No Enthusiast Can Do Without
THE

**BADMINTON
GAZETTE**

Edited by H. A. E. Scheele

★
Six issues are published from
October to April
32 pages each issue,
well illustrated

Reports from all over the world
It keeps you informed

The Badminton Gazette is
the official organ of the
Badminton Association
of England

and
The Official Outlet for
I.B.F. News

Annual post free subscription
(6 issues)

15/-sterling or \$2.25
should be sent to

**THE
BADMINTON GAZETTE**

Churchstow, Chislehurst
Kent, England

TOURNAMENT DATES TO REMEMBER

TOURNAMENTS SANCTIONED AS OF JANUARY 12, 1965

JANUARY

8-10 Central Penn. Open
16 Flint Open Dbls.
22-24 Dave Freeman Open
18-23 Maryland State "C"

Indiantown Gap, Pa.
Flint, Mich.
San Diego, Cal.
Baltimore, Md.

FEBRUARY

5-6 Westchester County Bad. T.
15-20 Maryland State "B"
26-28 Flint "E" Open
George Harman, Oklahoma Bad.

New York, N. Y.
Baltimore, Md.
Flint, Mich.
Ponca City, Okla.

MARCH

6-7 Ohio Open
5-7 Mason-Dixon
12-14 Southern Bad. T.
27-28 Midwest Championships
22-27 Maryland State Championships

Shaker Heights, O.
Baltimore, Md.
Natchitoches, La. -
Flint, Mich.
Baltimore, Md.

APRIL

9-11 Flint Closed

Flint, Mich.

A Thumbnail Sketch of The People Who Are Busily



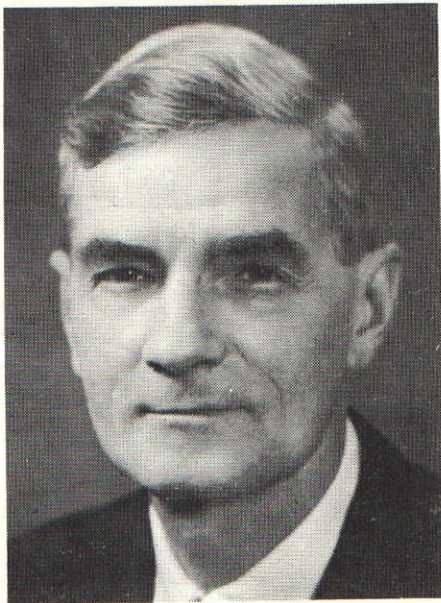
TAYLOR CAFFERY

Tournament Chairman

Chief Mogul of the New Orleans group for too many years to politely mention, Director of ABA in early 1940's, past president of the Southern BA currently director and 2nd vice pres. of ABA and permanent secretary of the Southern, he also plays badminton. His titles are all local—city, state and Southern, but they are numerous. He is constantly looking for new players, attending tournaments, giving school exhibitions and trying generally to spread the popularity of the game.

ELLIE CAFFERY — HOSPITALITY

Civic worker and party girl, Ellie qualifies admirably for this job. But her hospitality ends when she walks on the court — she holds many local **XD** trophies. She is looking forward to seeing you at her house on Tuesday, April 13th for cocktails.



DICK ROSEBROUGH (DAD)

Chief Umpire

Dad is the senior member of New Orleans badminton at 61, but neither accepts nor needs special consideration, for he is one of the strongest **MD** and **XD** players in town. In movement he is extremely loose and his style and shots are classic.

BOB AND GLORIA NORMANN

Trophies and Housing

Regionally renowned blue water sailors with their sloop "Dixie Girl", they have been playing badminton about 4 years. Also adept at tennis, they direct their energies toward the promotion of both sports. The New Orleans Group is working Bob and Gloria as hard as possible right now, because come time for the Nationals, they will be busy being parents for the first time!



Preparing For The 12th U.S. Open In New Orleans April 13—17



ERNEST SUTTER
Tournament Director

A two racket sport man, he has been at badminton and tennis many years. His tennis titles over a 33 year span and include two National Intercollegiates, the National Veteran Doubles (in 1961 with his brother Clifford—the first brother team to win) and too many regional titles to mention. Badminton titles are more local and include several city and state titles and one Southern Veterans Mixed. He has ended his blossoming tennis career. Shot up he was told he could never be athletic again but determination and constant exercise conquered the handicaps. Feeling that one game complements the other, he is at one of them practically every day and devotes much time to their promotion. Capable of intense and sustained concentration, he asserts that the eye on the bird and/or ball is the key to both games.

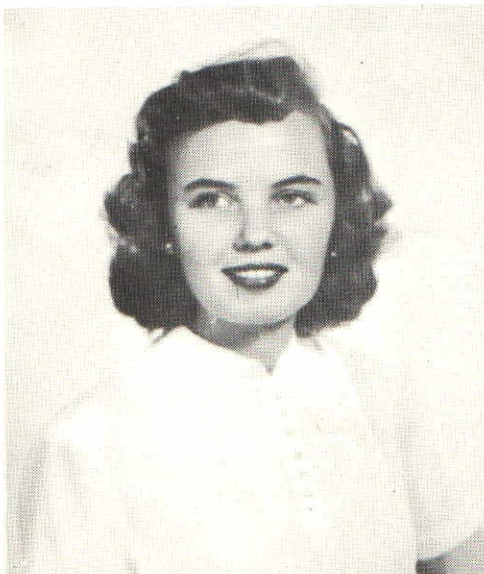
KATHERINE SUTTER - DANCE

Holds numerous XD titles on regional level. Has played since girlhood, so has earned her veteran status in action — but you won't realize it looking at her.



BETTY MILLER
Treasurer

At 37 Mrs. F. W. (Poppy) Miller is the "strong" girl of the New Orleans Badminton. A champion tennis player, she covers court well in badminton, cuts off drives with an extremely quick eye, and has a good smash. She feels her badminton has helped tremendously her tennis net play, overhead, placement finesse and touch. Betty and Poppy are both champion shotgun experts.



FRED ESTOPINAL - PROPERTIES

No description is sufficient here. You will just have to wait and see him to believe it. His best performances are some times on the court, but often off it.



UBER CUP SQUADS

By J. Frank Devlin

What are we going to do to improve the general standard of play throughout the country and to keep the interest of our potential champions alive?

This is a very real problem, and with the defense of the Uber Cup coming up again next year I believe that we ought to be starting now, in fact we should have started years ago, to organize women's badminton throughout the country. With this in mind I wrote to all the Associations at the beginning of the season, suggesting that we try and fill the gap that exists between our 'world class' players and the rest of the field. My suggestion was that each Association organize a 'Uber Cup Squad' to consist of 6 Singles players and 2 Doubles pairs, which

might mean 6 or 10 players, and "Ability not Age", was to be the objective. I was bitterly disappointed at receiving only 5 replies, and to date only 2 Associations are planning to organize such a Squad.

It has been proven over and over again that strong teams and strong players only come from areas where there are many players and much competition. There are of course a few exceptions to this rule, but only rarely does a player rise and shine alone. These Uber Cup Squads, I hoped, would meet once a month for a day of competitive play with the best players as well as the older and more experienced ones helping the younger and/or less able ones with discussions of the play after the matches were over. This can be a very valuable mutual-assistance plan.

I had also hoped to reach as many groups as possible to coach, for I have had a great deal of experience at this in the past, and have since retired. The standard of some Squads would of course have been much lower than others, some of them way below the standard of players on the National Squad. Some Squads would have been very young, with the doubles teams in most cases mature players, but under this scheme we would have many of our women players, at least 100 of them, organized, and the general standard of play bound to improve. In addition to this I wanted to see those players who failed to make their Association Squad on the first try, challenging the lower members of these teams, and so keeping everyone on her toes.

PUSH

BIRD

CHATTER

INTERNATIONAL NEWS SCENE (continued from page 7)

her own and has been dominating the Ladies Singles events in the major tournaments. In the Wimbledon Open at London she was devastating allowing a total of only five points in her quarter final, semi-final and final matches, defeating Angela Bairstow 11-1, 11-0 in the final. Ursula will be making a strong ladies' doubles team this season with her Uber Cup teammate, Jenny Pritchard. They lost a close match in the Wimbledon to Angie Bairstow and Julie Charles 15-13, 11-15, 12-15. In the same tournament Bob McCoig (Scotland) had an impressive win over Lee Kin Tat 15-4, 15-11. It will be remembered that Lee Kin Tat is the man who defeated the great Erland Kops in the quarter finals of the All-England in 1964. It will be a pleasure to see Judy again after an absence of two years from the American Scene. (P. S.: A letter from Judy's mother, Grace Devlin, indicates that mother will be baby-sitting in Owings Mills while Judy competes at New Orleans).

* * * * *

We were indeed sorry to learn of the death of Al Hunt, noted English publicity man who did a great deal to put Badminton on the map. The *Gazette* mentioned that Mr. Hunt did a great deal of publicity work for eminent stage and screen stars. However, he is best remembered by Badminton fans for the clever stunts he got up to get publicity for Badminton in England. He regarded Kirsten Thorndahl, the famous Danish player, as a gift, and her floppy hair style and short skirts were featured in many newspapers. According to the *Gazette* account, he arranged interviews with Wong Peng Soon in Chinese restaurants, and took Joe Alston on a tour of Scotland Yard, where Joe's professional interest received considerable press coverage.

* * * * *

The latest edition "*Handbook of the International Badminton Federation for 1965*" is off the press and will be eagerly awaited by Badminton enthusiasts the world over. This magnificent compendium of Badminton information is again edited by

H. A. E. Scheele and is published by the International Badminton Federation. Its 344 pages are jam-packed with useful information. No other publication contains the complete and informative records of International Badminton and National Championships throughout the world. Complete stories and results of all Thomas Cup and Uber Cup Matches are contained, including the sensational challenge round at Tokyo last spring. Many interesting photographs are shown of noted players and play around the world. Certainly its modest price puts it within any players' reach and will give many hours of pleasure and information. Our congratulations again to Editor Scheele for his truly outstanding and successful efforts to maintain the very high prestige and standard of this monumental work.

* * * * *



AROUND-THE-WORLD BADMINTON TOUR (CONCLUSION)



by J. Frank Devlin

From Kyoto to Numazu we rode an excellent narrow gauge railway and then took the buss to Fuji-Hakone National Park and passed close to Mt. Fuji, which was hidden by clouds. We stayed at the Fujiya Hotel which must be the most beautiful spot in all Japan. All the rest of Japan which we saw is so modern and Americanized that we were perhaps a little disappointed. On the way from Fuji to Tokyo we visited a typical Japanese house — many rooms every which way, all polished woodwork, lovely Cypress floors soft as silk, sliding doors, a large modern kitchen and a shrine-room for family worship. The beds, or sleeping-pads on the floor are folded up and put away in closets during the day, and in the cold weather each room is heated by a small earthen brazier. We also visited the 42ft. bronze Buddha, Daibutsu and then lunched at the Grand Hotel overlooking Yokohama's busy harbour.

On from here to Tokyo and the Ginza Tokyo Hotel. We were all exhausted after our long buss-ride from Numazu, and after arranging our games for the next day I returned to my room at 6 p. m., climbed into bed and never moved again till next morning.

The 25th dawned bright and sunny and everyone went sightseeing until we gathered at the YWCA for badminton at 4:30 p. m. We played

three singles, two ladies doubles, and one mixed double. The Japanese players were charming and the officials very nice to us. Here again our players all received souvenirs after the games as tokens of friendship. The next day, while the rest of the gang went on a fourteen hour sightseeing trip by buss and train to Nikko, Bill Fischer and I took a taxi to the beautiful new Olympic Stadium, where we spent about two hours prowling around and checking up on the situation for our athletes! Next day the Badminton Committee hosted us to a Japanese dinner, arranged by the Nippon Badminton Association Secretary, Mr. Masaharu Yakakura. This was for the players only, Herbert and Florence Swinarton, the Longaard sisters, Gloria Page, Cricket Armfield, Sue Baety, Bill Fischer, Jorgen Kõlle and myself. Wonderfully interesting and absolutely delicious. We took our shoes off, sat on the floor and were expected to use chopsticks — this proved too frustrating for me and I was allowed to use a fork. I must admit that I got very cramped and stiff by the end of the meal, but it was a most friendly and enjoyable experience.

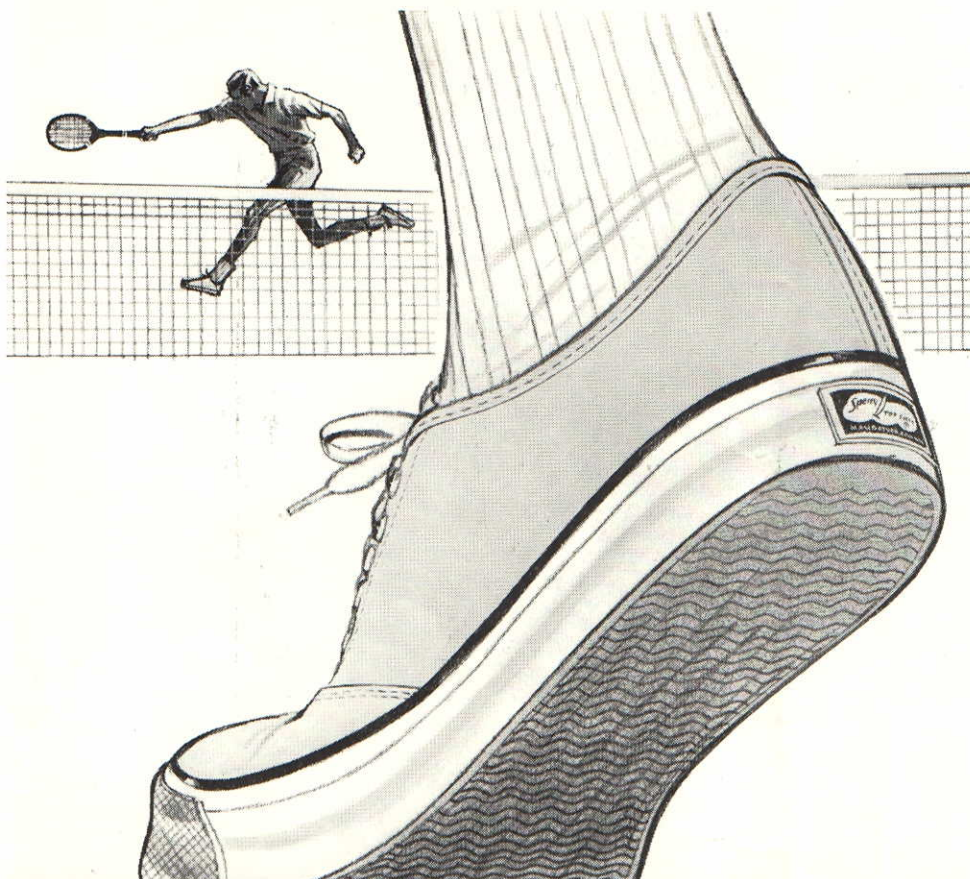
On the morning of the 27th five of us had a wonderful tour all through the suburbs of Tokyo by hired limousine. We visited the American Embassy and then on to the Canadian Embassy where we

were taken on a personally conducted tour by the Ambassador, a most charming and amusing man.

The 28th of August was the day we crossed the International Date-line, so, after an intriguing view of the Monorail, just completed and said to be the longest in the world; we left Tokyo at 8 p. m. and arrived in Honolulu at 10:15 a. m. of the same day. Hawaii is just as beautiful as I remembered it from 1936 from OUTSIDE the town, but the beaches, etc., are like Miami. Here the Tour broke up, those with time to spare stayed on for several days, while the rest of us boarded a plane to Los Angeles.

In looking back over the Tour, while our standard of badminton in spite of Herculean efforts was uneven, the atmosphere which surrounded us the whole way, was so friendly and hospitable, and our hosts so delightful and gracious, that we all went away from each country with the feeling that we had indeed made new friends, and for those friends who may read this, I want to say, "please come and visit us in North America and give us an opportunity to return some of the generous hospitality you showed us, along with some games of badminton." There are many names I have not mentioned, many faces I was never able to attach names to, but my name is Frank Devlin of Owings Mills, Maryland, U. S. A.

The End!



HERE'S FLEXIBILITY, COMFORT... AND FANTASTIC GRIP

Sperry Top-Sider exclusive anti-slip sole has razor-fine, zig-zag cuts. They give you a firm grip on every type of court—yet prevent dirt and pebble pick-up. They give your foot extra bending flexibility, even though there's extra deep rubber on this sole. Add foot-contoured fit, double-deep heel cushions and you get effortless action from comfortable, relaxed feet. All for \$9.95—choose between: Canvas Oxford with special non-chafe lining for men, women (Juniors \$8.95); Racquet Oxford for men, cushioned arch, every point of wear reinforced.



CANVAS OXFORD

RACQUET OXFORD

12 RUBBER AVE. NAUGATUCK, CONN.

NATIONAL NEWS (cont. from p 6)

rule, and its application to groups of our kind. I can see where such a rule would apply to group A players, where the wood shot is a rare shot and very often cannot be detected. I cannot see how such a rule can further the aims of the game as a whole, with regard to players of lesser ability. In Tennis, I believe the situation is entirely different, as wood shots do not very often "ace" the opposing player. In Badminton, however, an erratic wood shot will time and again turn out to be the winning shot in a close game. I feel this is degrading to the play-

ers, and at the same time, promotes the wrong spirit in the contest."

"I hope that perhaps we have been wrong in our interpretation of the rule regarding wood shots, and that you will clarify it for us. Many thanks in advance for your help."

In our reply we did our best to clarify the rule change. We summed up the matter in the concluding paragraph of our letter by stating that, whether or not we like the rule, we should play by the rules to insure uniform play and to avoid misunderstanding. If we don't like the rule we should exert every effort to have it changed, but as long as it is the rule it should be observed.

MISCELLANEOUS NOTES ON 1965 NATIONALS

1. Among the many others, you will see the following who have already agreed to participate:
Judy Hashman, Margaret Barrand, Chanaroong Ratanasaengsueng, Erland Kops, Wayne Macdonnell, Eiichi Saki, doubles champ of Japan and Takeji Miyanaga, his doubles partner.
2. Will the U. S. top ranked players please mail a photo or two into Alfred Brown, Publicity Chairman, 1805 NBC Bldg., New Orleans, Louisiana, 70112, so that he can be ready to break some news on the local level?
3. Entries postmarked April 17th will be accepted. If you mail your entry on the 17th, please send it air mail.
4. Will the holders of all permanent challenge trophies, please ship them to Robert Norman, Trophy Chairman, c/o White Brothers Jewelers, 732 Canal Street, New Orleans, 70112?
5. RSL #1 Tourney pointed feather birds will be used.
6. The participation of qualified juniors in this senior tournament is actively solicited. The junior tournament will be in Houston, only 200 miles from New Orleans, and will end just a few days before the senior starts. With the hope of building up our Thomas Cup hopes for the future, there is nothing to take the place of competition in an event with more pressure and more talent than will be present in the junior. And years of experience is better than a few experiences. So starting early, in hope, is recommended. If the juniors attending the senior tournament are not accompanied by one or more parents, the junior can write Housing Chairman, Mrs. Gloria Norman, 1805 NBC Bldg., New Orleans, La., 70112, for private accommodations, which will be provided on a first asked basis so long as the supply lasts.
7. No photography by flash or other extra light will be permitted during any of the matches.

Wanted



EDITOR
FOR

JUNIOR
PAGE

Contact
MARY MORAN
Bird Chatter Editor
Pine Street
Dover, Mass. 02030

ALSO WANTED!

NEWS FROM AND ABOUT
JUNIORS. ALSO STORIES
AND PICTURES.



The I.B.F. HANDBOOK 1965

includes
THE LAWS OF BADMINTON
and all
RULES AND REGULATIONS
as well as

Articles on Current Affairs
Full Thomas Cup and
Uber Cup Scores
Championship and International
Match Records from all over
the World
Illustrations, etc., etc.

344 pages \$1 post free

From the Honorary Secretary
The International Badminton
Federation,
4 Madeira Avenue,
Bromley, Kent, England

DON'T QUIT

When things go wrong, as they sometimes will,
When the road you're trudging seems all uphill,
When the funds are low and the debts are high
And you want to smile, but you have to sigh,
When care is pressing you down a bit,
Rest if you must, but never quit.

Life is queer with its twists and turns,
As everyone of us sometimes learns,
And many a failure turns about
When he might have won had he stuck it out,
Don't give up, though the pace seems slow—
You may succeed with another blow.

Often the goal is nearer than
It seems to a faint, faltering man—
Often the struggler has given up
When he might have captured the victor's cup,
And he learned too late, when the night slipped down
How close he was to the golden crown.

Success is failure turned inside out—
The silver tint of the cloud of doubt,
And you can never tell how close you are;
It may be nearer when it seems afar;
So stick to the fight when you're hardest hit—
It's when things seem worst that you musn't quit.

Reprinted from Hub Mail, Boston, Mass.

TOURNEY RESULTS WASHINGTON STATE JR. OPEN 18 AND UNDER

- MX** J. Doherty & T. Barinaga, def. K. Crow & S. Wilson 8-15, 15-9, 15-6.
BS Ken Crow, def. John Doherty 17-15, 15-12.
BD K. Crow & K. Conway, def. J. Doherty & D. Keinholz 10-15, 15-3, 15-11.

MORE ON PAGE 25

MICHIGAN LEAGUE

- LD** N. Pritula & N. Lawson def. C. Crosson & L. Stockton 15-13, 15-4.
MD J. Clancy & J. Stevens def. T. Carmichael & B. Petz 15-7, 15-12.
MX T. Carmichael & J. Richardson def. J. Stevens & D. Bedford 8-15, 15-2, 15-8.
Sr. D. C. Eli & V. Pritula def. F. Rndell & S. Stockton 17-15, 15-4.

HOUSTON FALL OPEN

- LS** Virginia Hicks def. Nancy Norvell 11-4, 11-4.
MS Duane Slaughter def. Charles Thomas 15-11, 15-7.
LD V. Hicks & E. Scott def. O. Stekoll & N. Norvell by default.
MD H. Berryman & H. Clark def. C. Holbrook & D. Kamperman 15-7, 15-5.
MX V. Hicks & H. Berryman def. L. Harman & H. Clark 17-15, 15-11.
Sr. D. H. Clark & C. Thomas def. T. Caffery & Rev. Jenkins 15-12, 15-2.
Sr.MX V. Hicks & H. Clark def. Taylor & Ellie Caffery (no scores avail.).

GOLDEN BIRD, CHICAGO

- LS** Patty Ling def. Joyce Wanek 11-0, 11-6.
MS Chuck Morton def. John Zimmerman 9-15, 18-16, 15-7.
LD D. Rather & D. Ashman def. P. Pontow & J. Moore 15-9, 17-14.
MD T. Barber & R. Stern def. G. Brown & J. Byrnes 12-15, 15-6, 15-0.
MX R. Stern & B. Knaut def. J. Zimmerman & V. Hendricks 17-16, 12-15, 15-13.
Sr. D. B. Petz & H. Rogind def. E. Jarrett & D. Wigglesworth 15-12, 15-9.

GOLDEN BIRD CONSOLATION

- LS** Jean Pankonin def. Penny Stockton 21-2.
MS Gene Rasch def. George Nagy 21-14.
LD P. Stockton & E. Yeiser def. P. Dillon & C. Stancaak (no scores)
MD J. Knotek & J. Scudella def. B. Ling and W. Muthig 21-5.
MX B. Moosekian & J. Sanquist def. S. Swerson & L. Browski 21-6.

25th ANNUAL SEMANA NAUTICA

- A FLIGHT**
MS C. Ratanaseangsuang def. P. Loaharanu 15-5, 15-9.
LS Janice deZort def. Helen Tibbetts 5-11, 12-11, 11-7.
MD M. Armendariz & D. Paup def. Ratanaseangsuang & Loaharanu 9-15, 15-14, 17-14.
LD J. Pons & M. Breckell def. B. Armendariz & D. Haase 15-12, 5-15, 15-11.
MX Ratanaseangsuang & B. Armendariz def. Paup & J. Pons 15-6, 10-15, 15-7.
Sr.MX L. Calvert & J. Pons def. W. Lyon and D. Haase 15-10, 11-15, 15-7.
Sr.MD L. Calvert & W. Kinnear def. C. Randolph & W. Lyon 15-10, 15-6.

TOURNAMENT RESULTS

NOTE TO TOURNAMENT CHAIRMAN

Please send a copy of Tournament Results to:

Bird Chatter
c/o Mary J. Moran
Pine St., Dover, Mass.

Results should be typewritten following the format in this Tournament Results section. In addition, all open tournament results should be reported in the form of the complete draw to Grace Devlin, Chairman, National Ranking Committee, Dolfied Rd., Owings Mills, Md.

If results are not typewritten as stated above, they will not be included.

SEMANA NAUTICA

A CONS.

- MS** Jim Lynch def. Pat Armendariz 15-5, 15-4.
LS Barbara Bridges def. Sue Vening 11-2, 5-11, 11-5.
MD Pichai & Haase def. S. Hales & P. Armendariz 15-9, 11-15, 15-8.
LD S. Vening & A. Buckalew def. A. Luick & B. Bridges 15-9, 18-15.
MX B. Judy & A. Buckalew def. T. Heden & L. Kirby 17-15, 15-12.
Sr.MX R. Mejia & Kirby def. Ed Spruill & L. Neiss 15-7, 9-15, 15-1.

B FLIGHT

- MS** Bill Judy def. Don Ryan 15-7, 15-7.
LS Gloria Page def. Lynn Hurt 11-2, 11-0.
MD W. Lyon & D. Warnack def. J. Lynch & B. Johnston 15-10, 12-15, 15-9.
LD S. Vening & J. DeZort def. L. Hurt & G. Page 15-13, 15-4.
MX B. Judy & A. Buckalew def. B. Johnston & J. DeZort 15-1, 15-11.

B CONS. FLIGHT

- MS** Willie Gray def. Ridhiraj 15-7, 12-1 default.
LS Judy Stevens def. Barbara Krohn 11-4, 10-12, 11-7.
MD D. Ryan & S. Heath def. Mercieca & Gray 15-11, 15-7.
LD L. Grossman & Stevens def. J. Haney & S. Cobb 15-7, 15-0.
MX D. Ryan & L. Neiss def. Ed Harris & Grossman 5-15, 15-10, 17-14.

MICHIGAN OPEN

- LS** Janice White def. Betty O'Hara 11-4, 11-7.
MS T. Carmichael def. Jack Keating 5-15, 15-6, 15-7.
LD A. Bowling & D. Bedford def. N. Pritula & J. White 4-15, 15-10, 15-8.
MD J. McQuie & S. Ash def. J. Keating & J. Hayes 15-7, 12-15, 15-11.
MX T. Carmichael & D. Bedford def. B. Bedford & A. Bowling 15-6, 18-14.
Sr.MD V. Pritula & C. Eli def. B. Anderson & B. Petz 15-7, 10-15, 18-17.

MANHATTAN BEACH OPEN JUNIOR

11 AND UNDER

- GS** Carry Kendall def. Lynne Enoch 11-0, 11-0.
Consolation G. S. Cynthia Young def. Kathy Garretson 11-2, 11-2.

13 AND UNDER

- GS** Diane Mies def. Tracy White 11-4, 11-5.
Cons. Barbara Lee def. Laurie Egan (no scores).

GIRLS A FLIGHT 15 AND 18 YEARS

- GS** Barbara Fitch def. Mary J. Lambert 11-8, 11-6.
Cons. Judianne Kelly def. Jo Bosacki 11-2, 12-10.

11 AND UNDER

- BS** Charles Coakley, def. Brian Richardson 11-5, 11-0.
Cons. Ames Monahan def. Pat Lizza 11-7, 11-6.

13 AND UNDER

- BS** Gary Higgins def. Charles Coakley 11-6, 6-11, 11-5.
Cons. Brian Richardson def. Clayton Pieper 11-0, 11-2.

BOYS A FLIGHT 15 AND 18 YEARS

- BS** Bob Dickie def. Mike Walker 15-9, 18-14.
Cons. Brad Patton def. D. Holloway 15-12, 15-7.

13 AND UNDER

- GD** T. White & P. Bosacki def. L. Egan & Mies 11-1, 11-5.
BD Healy & J. Bohn def. A. Monahan & Richardson 15-4, 15-2.

A FLIGHT

- MX** B. Dickie & M. Lambert def. B. Bohn & B. Fitch 15-11, 15-8.
BD B. Bohn & B. Dickie def. M. Walker & D. Healy 15-7, 15-12.
GD L. Robinson & J. Bosacki def. B. Fitch & J. Hauerwaas 17-14, 15-5.

B FLIGHT

- MX** B. Patton & L. Robinson def. J. Bohn & T. White 15-9, 15-4.

LOUISIANA OPEN

JUNIOR CHAMPIONSHIP FLIGHT

- GS** Brenda Izen, def. S. Scott 11-3, 11-8.
GD Ryan-Scott, def. Murphy-Ferris 15-12, 15-7.

COLLEGE CHAMPIONSHIP FLIGHT

- LS** Virginia Stegall, def. Kay Kester 11-9, 11-5.
MS Robert Crew, def. Dean Jearnigan 15-5, 15-2.
LD Cushing-Kester, def. Wescott-Wilkinson 15-1, 15-6.
MD Fisher-Crew, def. Cormack-Younger 15-11, 15-7.
MX Kester-Jearnigan, def. Hufty-Jones 15-8, 15-10.

LOS ANGELES B - C NOVICE

- LS** Dianne Moore def. Sandy Jenkins 5-11, 11-5, 11-4.
- MS** Jim Lynch def. Hank Anderson 15-11, 15-12.
- LD** D. Moore & M. Trifonoff def. Buchelew & Jenkins 15-8, 15-12.
- MD** B. Gordon & H. Moore def. Dhillon & Luevano 15-11, 18-13.
- MX** Kim & Ogren def. H. Moore & D. Moore 12-15, 15-13.
- Sr. MX** M. Breckell & D. Fleming def. C. Randolph & A. Leong 15-5, 7-15, 15-7.

C FLIGHT

- LS** Pat Dixon def. Terry Stevens 11-4, 11-9.
- MS** John McElmeel def. George Thatcher 11-15, 15-11, 18-15.
- LD** T. Stevens & J. Grossman def. K. McGregor & B. Bullara 11-15, 15-7, 15-0.
- MD** M. Laidlow & J. Fryer def. M. Walker & E. Harris 10-15, 15-12, 18-14.
- MX** A. Arkangel & T. Stevens def. E. Harris & J. Grossman 17-14, 15-11.

MANHATTAN BEACH DOUBLES

A FLIGHT

- LD** L. Alston & D. Haase, def. M. Breckell & J. Pons 8-15, 15-8, 17-14.
- MD** J. Alston & W. Rogers, def. M. Armendariz & D. Paup 15-8, 18-15.
- MX** J. Alston & L. Alston, def. D. Paup & J. Pons 15-11, 15-8.
- Sr. MX** W. Kinnear & N. Tibbetts, def. L. Calvert & J. Pons 15-6, 15-13.
- Sr. MD** W. Rogers & W. Lyon, def. L. Calvert & W. Kinnear 10-15, 15-5, 15-9.

A CONSOLATION

- LD** M. McMurray & M. Trifonoff, def. J. Adamos & L. Erkkila 15-12, 15-7.
- MD** L. Calvert & E. Spruill, def. F. Trifonoff & L. Saben 17-14, 15-10.
- MX** R. Park & M. McMurray, def. B. Judy & A. Buckalew 15-4, 15-1.
- Sr. MX** E. Spruill & D. Parsons, def. B. Gordon & V. McFarlin 18-14, 15-11.
- Sr. MD** L. Dukehorn & D. Nawells, def. H. Schwitkis & W. Schappe 17-14, 15-5.

B FLIGHT

- MD** L. Saben & B. Judy, def. B. Johnston & D. Warnack 15-12, 15-8.
- LD** D. Moore & A. Leang, def. G. Meyen & L. Hurt 10-15, 15-6, 15-1.
- MX** L. Saben & D. Moore, def. C. Randolph & L. Carlson 15-10, 8-15, 15-5.

B CONSOLATION

- MD** M. Laidlaw & B. Fryer, def. C. Harris & A. Arkangel 15-9, 15-5.
- LD** B. Hull & E. Brown, def. L. Neiss & J. Stevens 15-8, 17-15.
- MX** D. Warnack & G. Meyen, def. P. Dhillon & L. Hurt 15-10, 15-5.

SOUTHERN CALIFORNIA

- MS** Channarong, def. Jim Poole 15-5, 15-9.
- LS** Pat Gallagher def. Tyna Barinaga 11-6, 11-7.
- MD** D. Paup & J. Poole def. W. Rogers & J. Alton 15-6, 15-10.
- LD** H. Tibbetts & T. Barinaga def. J. Pons & M. Breckell 15-5, 15-13.
- MX** Lois & Joe Alston def. D. Paup & J. Pons 15-9, 14-17, 15-9.
- Sr. MX** L. Calvert & J. Pons def. W. Kinnear & H. Tibbetts 15-8, 11-15, 15-10.
- Sr. MD** Randolph & Cogan def. Lyons & Rogers 15-11, 3-15, 15-6.

B FLIGHT

- MS** Chamberlain def. L. Saben 15-7, 15-11.
- LS** Jenking def. Vening 12-10, 6-11, 11-4.
- MD** Saben & Fleming def. Kim & Loomis 15-12, 18-15.
- LD** Adamos & Meyen def. Moore & Jenkins 12-15, 17-15, 15-11.
- MX** Judy & Buckalew def. Lyon & Page 15-2, 15-5.

A CONSOLATION

- MS** Trifonoff def. Heden 15-3, 15-3.
- LS** J. DeZort def. D. Moore 12-9, 2-11, 11-2.
- MD** Trifonoff & Judy def. Kinnier & Mijia 17-14, 17-14.
- LD** Berry & DeZort def. Venning & Cypert 11-15, 15-4, 15-9.
- MX** Park & McMurray def. Judy & Buckalew 18-15, 17-14.
- Sr. MX** Loomis & Page def. Gordon & McFarlin (default).

B CONSOLATION

- MS** Holmes def. E. Harris 15-13, 15-6.
- LS** Stevens def. Tan 11-2, 11-7.
- MD** Kiffe & Schimmer def. Flournoy & Hall 10-15, 15-2, 15-10.
- LD** Gibbons & Neiss def. Groosman & Stevens 15-10, 15-11.
- MX** Schimmer & Gibbons def. Fryer & Greene 15-11, 15-8.
- MX** Novice Steenson & Thomas def. Bidgood & Hasse (default).

WASHINGTON STATE OPEN JUNIOR

13 AND UNDER

- GS** Chris Burton, def. Ellen Van Os, 11-4, 11-1.
- GD** C. Burton & E. Van Os, def. K. Hogan & P. Thorne 15-5, 15-0.
- MX** K. Nelson & C. Burton, def. B. Jones & N. Duan 15-12, 15-12.
- BS** Bob Jones, def. Ken Nelson 15-6, 15-7.
- BD** K. Nelson & B. Jones, def. R. Bourne & C. Blaney 15-7, 15-4.

15 AND UNDER

- GS** Sue Wilson, def. Judy Brodhun 11-0, 12-10.
- GD** H. Hill & C. Young, def. L. Judd & P. Jacobson 15-10, 15-3.
- MX** K. Kreider & J. Brodhun, def. R. Neill & P. Jacobson 15-10, 15-3.
- BS** Richard Neill, def. Richard Bourne 11-15, 15-5, 15-2.

SEATTLE CITY CHAMPIONSHIPS

A CLASS

- LS** Caroline Jensen def. Sue Wilson 11-0, 11-2.
- MS** Don Davis def. Nick Johnson 9-15, 15-12, 15-5.
- LD** Jensen & Wilson def. V. Andersen & J. Jones 15-7, 15-4.
- MD** D. Davis & J. Riday def. J. Johnson & N. Johnson 15-8, 15-12.
- MX** Jensen & N. Johnson def. D. Armstrong & D. Davis 15-12, 15-6.
- Sr. D.** C. Andersen & J. Riday def. J. Morris & D. Ferrell 15-7, 15-10.

B CLASS

- LD** H. Hill & C. Young def. C. Burton & Van Os 17-18, 15-9, 15-8.
- MD** K. Conway & B. Jones def. D. Jensen & D. Carrell 15-4, 15-10.
- MX** C. Young & D. Carrell def. G. Mallory & B. Armstrong 15-9, 15-5.

C CLASS

- LD** L. Buck & D. Sands def. P. Thorne & N. Dunn 15-11, 11-15, 17-16.
- MD** B. Udall & D. Wedell def. P. Benson & B. Engberg 3-15, 18-15, 15-12.
- MX** L. Buck & R. Buck def. S. Jones & B. Jones 6-15, 17-14, 15-11.

WASHINGTON STATE CLOSED

"A" FLIGHT

- MS** John Doherty def. Carl Peters 6-15, 15-9, 15-7.
- LS** Tyna Barrinaga def. Carolyn Jensen 11-3, 11-5.
- MD** J. Doherty & D. Kienholz def. C. Mulberg, C. Andersen 12-15, 15-10, 18-15.
- LD** T. Barrinaga & C. Jensen def. V. Andersen & J. Jones 15-0, 15-1.
- MX** K. Crow & V. Andersen def. J. Doherty & T. Varrinaga 15-12, 15-2.

"B" FLIGHT

- MD** K. Conway & H. Green def. C. Mountain & B. Armstrong 10-15, 15-4, 15-5.
- LD** C. Korpe & H. Savage def. H. Hill & C. Young 15-12, 15-12.
- MX** H. Savage & K. Conway def. J. Jones & B. Jones 18-15, 8-15, 15-10.

"C" FLIGHT

- MD** D. Keinholz & B. Jones def. J. Eden & R. Neill 15-12, 15-6.
- LD** (Round Robin) 1st place: Jackie Savage & Laurie Judd. 2nd place: Hester Hill & Connie Young.
- MX** J. Brodhun & K. Kreider def. R. Ferrell & C. Young 15-7, 16-18, 15-13.

15 AND UNDER

- BD** R. Ferrell & K. Kreider, def. R. Neill & J. Eden 15-11, 9-15, 15-10.

18 AND UNDER

- GS** Tyna Barinaga, def. Sue Wilson 11-3, 11-1.
- GD** T. Barinaga, & S. Wislon, def. J. Savage & L. Judd 15-1, 15-4.

SEE BOTTOM OF PAGE 23



REGIONAL TOURNAMENT CHAIRMEN FOR 1965

Region I
(New England)

John Nelson
24 School Street
Concord, New Hampshire

Region II
(Middle-Atlantic)

William K. Parsons
1120 Twelfth Avenue
Altoona, Pennsylvania

Region III
(Southern)

Taylor Caffrey
1806 National Bank of Commerce Bldg.
New Orleans 12, Louisiana

Region IV
(Midwest)

Mrs. Betty O'Bara
124 Davis Road
Centerville 59, Ohio

Region V
(Southwest)

Edward F. Stuart
5200 Holly
Bellaire 101, Texas

Region VI
(Western)

Joseph Alston
989 Hillside Terrace
Pasadena, California

Club Play Directory

This Directory is for the benefit of badminton players who travel or move to new areas. If you would like to extend the hospitality of your club to fellow players, please send the necessary information to The Editor.

Concord, N.H.—
3 area clubs; play available at one or the other throughout the week. For information call
John Nelson CA-5-9658
Jim Mackinaw (Penacook) PL-3-4054

Manchester, N.H.—
Play at YMCA daily and at YWCA.
For information call
Phil Peters 191 N Gate Rd.
Bob Richards (Amherst) Brookwood Dr.

Keene, N.H.—
Play at YMCA daily. For information call
Jim Wilson Keene YMCA

Claremont, N.H.—
Play at City Armory on M, T, and Th.
For information call
Larry Guay 542-4165
Ralph Mitchell 543-3712

Barrington, R.I.—
Play at Cedar Hall on W eve. For information call
Calais Redfern GE-3-0165

Pawtucket, R. I.—
Play on M, W and Th eve. For information call
Edw. Connor PA-2-4900
James Donaldson PA-3-4822

Warwick, R.I.—
Play at Kent County "Y" Club on W eve. For information call
Edw. Phillips RE-7-9060
Jack Cooper RE-7-8072

Boston, Mass. area—
Needham H.S., Needham, Mass., T and Th eve.
For information call
Bill Hutcheson (Bus) RI 2-2410, (Home) 444-2397
Maugus Club, Wellesley, Mass, T and Th eve. and Sun afternoon. For information call
Don Lumsden (Bus) 444-0886
(Home) 444-0692

Greenwich, Conn.—
Play on T and F evenings.
For information call
Stephen Edson (Bus) TO-9-9222
(Home) TO-9-0007

Westport, Conn.—
YMCA, T. and Th eve and Sa and Su afternoon.
For information call
YMCA CA-7-4159

New Haven, Conn.—
3 area clubs playing W-F eve and Su afternoon.
For information call
Harold Smith HU-8-1082

Westchester County, N.Y.—
6 area clubs playing M-F. For information call
Donald Blewett TE-4-5567
Larchmont, N.Y.

New York, N.Y.—
Westside Y.M.C.A. playing on F and Sa eve.
For information call SU-7-4400
Central BC playing on M and Th eve. For information call PL-3-0600 or MU-8-3867
Union B.C. playing on Su afternoon and eve. Also during the week. For information call
Evelyn Gorman FI-8-6659

Western New York area—
6 area clubs; play available at one or the other throughout the week. For information call
Barbara Maedl (Buffalo) TR-3-0121
Bea Massman (Snyder) TF-9-2357
Ethel Marshall (Williamsville) NF-4-5248
Frank Comstock (Rochester) CO-6-9063

Pittsburgh, Pa. area—
Play available in several areas throughout the week. For information call
Dr. Peter Stejdehar WO-3-8357
Carl Connell EX-1-2800
Ext 543
M. W. Sample MU-2-9527
Jake Lipman HA-1-0402
C. B. (Buck) Gwynn Jr. FA-7-4003

Lebanon, Pa.—
Lebanon Y.M.C.A. playing W and F eve. 6:30 to 8. — Sat 5 to 7. For information call
Harvey E. Snavelly 272-4843

Philadelphia, Pa. area—
Central Branch YMCA, Philadelphia on T and F eve. For information call
Elizabeth Summa WA-5-3868
Manual Baltaitan SU-9-5315
Wissahickon BC, Chestnut Hill, Pa. For information call CH-7-9990
or IV-2-5338

Haverford BC, Haverford, Pa. For information call
Dr. MacDonough MI-2-1180

Wilmington, Dela.—
Dilwyne BC playing on M and W eve and Sa morning. For information call
Naomi Bender PO-4-5776

Baltimore, Md.—
Gilman BC playing M-F eve. For information call
Cynthia Dryden (Bus) TU-9-9982
(Home) TU-9-0626
(Bus) MU-5-1400
(Home) DR-7-8413

Huntington, W.Va.—
Play T and Th eve at Edwin P. May YMCA. For information call
C. D. Lauer JA-3-8961

Cleveland, Ohio—
Moreland School, Shaker Heights, T and Th eve. For information call
Gary Colton (Bus) WH 3-6161, (Home) LI 4-7305

Akron, Ohio—
Feather Clipper Club plays F eve at YWCA. For information call
Jean Clark HE-4-0513

Columbus, Ohio—
Grandview HS Th eve. For information call
Esther Newell HU-8-5835

Dayton and Cincinnati, O.—
Daily play; also M, T, and Th eve. For information call
Zils Obara (Centerville) (Bus) CL-2-5611
(Home) TU-5-3658

Flint, Mich.—
One area club playing T and Th eve. For information call
John Clift (Bus) CE 9-8587, (Home) CE 5-0453

Detroit, Mich. area—
2 clubs play daily. For information call
Hans Rogind (Bus) SU-8-7510
(Home) LI-4-7305

Grand Rapids, Mich.—
E. Grand Rapids HS on T and Th eve and Sa afternoon. For information call
Emery Freeman (Bus) GL-1-0714
(Home) GL-2-3756

Chicago, Illinois—
4 area clubs playing on Tu and F eve and Su p.m. For information call
James Wigglesworth (Bus) TA 9-0144
(Home) HI 6-5815
George Brown (Bus) 372-0500, (Home) 834-0946

Memphis, Tenn.—
Memphis State Field, Tu and Th eve. For information call
Virginia Anderson GL-2-4579

Atlanta, Ga.—
Atlanta Athletic Club group plays W eve and Su p.m. For information call
Allen McGhee MU-8-4110

Vicksburg, Miss.—
Play at All Saints Episcopal School Gym by arrangement any time. For information call
Sam Parkerson 636-5266 or 636-4140

Shreveport, La.—
Y.M.C.A., T and Th eve. For information call
Fanny Payne (Bus) 425-3221
(Home) 858-5095

Natchitoches, La.—
T and Th eve and Sa p.m.. For information call
Red Thomas (Bus) 5571-ext. 252
(Home) 3824
(Bus) 5671
(Home) 3987

Pat Brown

Chattanooga, Tenn.—
Jewish Community Center, M eve. For information call
Charles Rogers (Bus) AM-7-7158
(Home) 4-3402

New Orleans, La.—
Daily noon play at YMCA. For information call
Fred Estopinal (Bus) WH-4-1811
Play on W, F, and Su eve. For information call
Taylor Caffrey (Bus) JA-2-5601
(Home) TW-9-3083
(Home) UN-6-6484

Betty Miller

St. Petersburg, Fla.—
Y.M.C.A., M, W, F noon. For information call
Mark McGary OR-1-6151

Tampa, Fla.—
City Trailer Park Gym, Th night and Sa a.m.
For information call J. R. Miller (Bus) 24-3-2461

Miami, Fla.—
Jackson High School Gym, W eve. For information call
Easter Smith, 2312 S.W. 16th Terrace
Jerry Toms, c/o Graham Dairy

Panca City, Okla.—
Continental Gym on W eve and Sa afternoon.
For information call George Harman RO-2-3456

Austin, Texas—
Austin Athletic Club Th. eve. 7-10
For information call Don Ryan GR 1-3361

Dallas, Texas—
Dallas Athletic Club—YMCA, M W and F. For information call
Ben Cole AD-5-0619
Dan Kamperman EM-8-6481

Fort Worth, Texas—
Convair Recreation Assn., Tu eve. For information call
Guy Harrison MA-6-1470

Houston, Tex.—
City of Houston Dwtwn. Recreation Ctr., Tu, 7-10 p.m. For information call
Lois V. Johnson (Bus) RI 8-2180 (Hm) MO 4-0775
Ogretta Stekoll (Home) RI 7-2928
Ed Stuart (Bus) HU 2-7111

Phoenix, Ariz.—
Arizona State U. gym, Tempe, Wed. 7-9 p.m.
Y.M.C.A. Phoenix, T and Th noon. For information call
Hank Anderssohn (Bus) 944-5022
(Home) AM-4-4364

Seattle, Wash.—
Washington AC playing on W. For information call
Ray Daughters MA-2-7900
Queen Anne Fieldhouse on Th eve. For information call
Carl Andersen LA-3-8234
Gladys Mallory LA-3-8528

Port Angeles, Wash.—
Play M-F eve. For information call
Vern Burton GL-7-5273

Portland, Ore.—
Multnomah AC, play daily. For information call
Verne Naraine CA-3-6251

Eugene, Ore.—
Eugene BC play on W eve. at Central Lane YW-YMCA. Other times by arrangement. For information call
Philip Janz 343-1059

San Francisco, Calif. area—
2 area clubs playing on T and F and Su p.m.
For information call
Jerry Eichelberger LA-2-5425

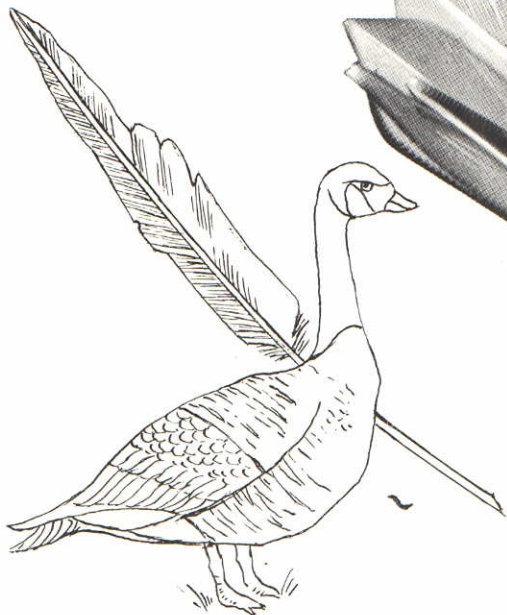
Santa Barbara, Calif.—
San Marcos on Th eve. For information call
Fred Widstrup 962-1504

Ventura, Calif.—
Anacapa J.H.S. Tu & Th eve. For information call
Bill Anderson MI-8-2026

Los Angeles, Calif. area—
7 area clubs; play available at one or the other throughout the week in evening. For information call
Alhambra, Frank Auxier CA-2-2411
Burbank, Vivian McFarlin TH-8-5021
Glendale, Dick Fleming CI-3-6125
Long Beach, Louise Carlson GE-9-9952
Pasadena, Ruth Greene SY-7-7205
" Joe Alston SY-9-3627
Santa Monica, Dave Trader EM-3-1949

San Diego, Calif.—
Federal Bldg., Balboa Park. Play available throughout week. For information call
Dorothy Parsons (Bus) 459-2388
(Home) 582-8297

There's No Substitute for
FEATHERS!



Made in the U.S.A.
by the largest
manufacturer of
Feathered Shuttle-
cocks.

R.S.L.

TOURNEY SHUTTLECOCKS

Want Performance? Accuracy? "True" Flight? The "Feel" of a Feathered Shuttlecock? Then you must use a Feathered Shuttlecock . . . there just isn't any substitute! Experienced players insist on using Feathered Shuttlecocks; most tournaments demand them! There just isn't any substitute for a Feathered Shuttlecock!

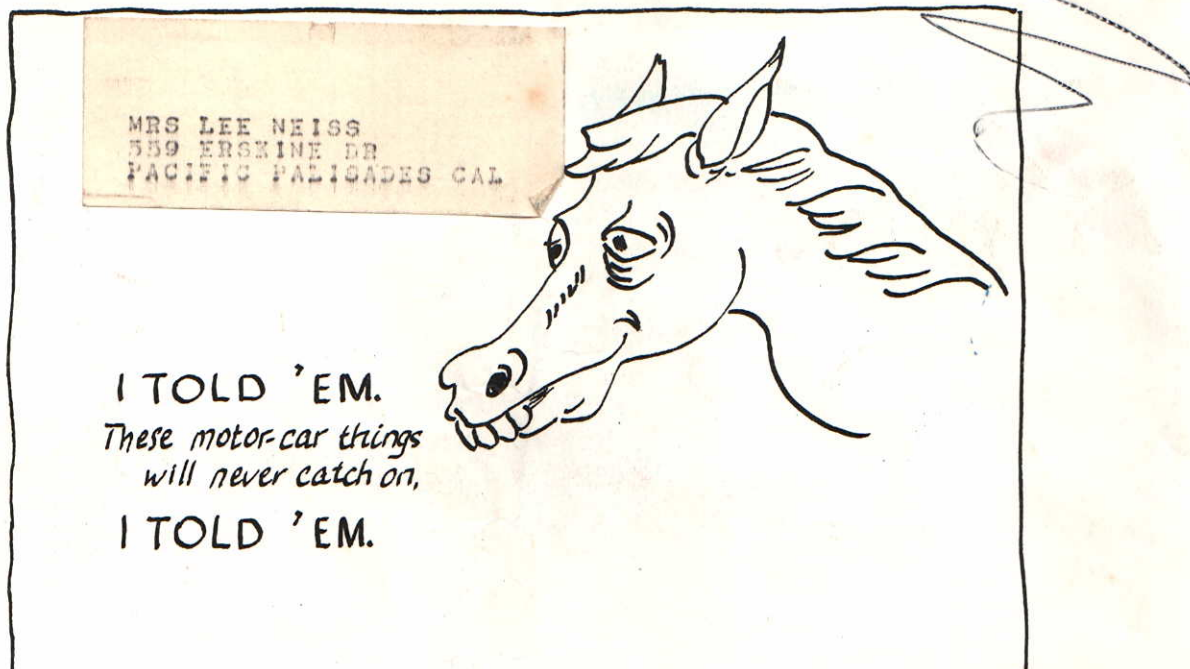
R. S. L. Feathered Tourney Shuttlecocks are made of highly selected white goose feathers in 13 speeds: from "73" slow to "85" fast for indoor play — "110" for outdoor use. No wonder R. S. L. is used in more international matches and leading tournaments throughout the world than any other make!

SOLD AT LEADING DEPARTMENT AND SPORTING GOODS STORES THROUGHOUT THE U. S. A.

If Unavailable Locally, Write to

R.S.L. SHUTTLECOCKS SALES CO., LTD.

1925 UNION AVENUE ★ P.O. BOX 1008 ★ ALTOONA, PA. (16603)



*BUT THE WINDS OF PROGRESS SWEEP ON AND
TODAY THE POOR OLD HORSE IS QUITE OUT OF DATE!*

TODAY we have ROCKETS
and NUCLEAR SUBMARINES
and SKYSCRAPERS
and STEEL SHAFTS on badminton racquets
—and NYLON SHUTTLES (of course!)

The modern clear-sighted way to Badminton enjoyment:

CARLTON NEW INTERNATIONALS
SAFFRON WALDEN,
ESSEX, ENGLAND. THE NYLON SHUTTLES

Can be purchased in the U.S. through:—

WILSON SPORTING GOODS CO.
2233 West St., River Grove,
Illinois

GENERAL SPORTCRAFT, LTD.
33 New Bridge Rd., Bergenfield,
New Jersey

PENNSYLVANIA
ATHLETIC PRODUCTS DIVISION
The General Tyre & Rubber Co.,
Akron, Ohio