

Chatter Bird

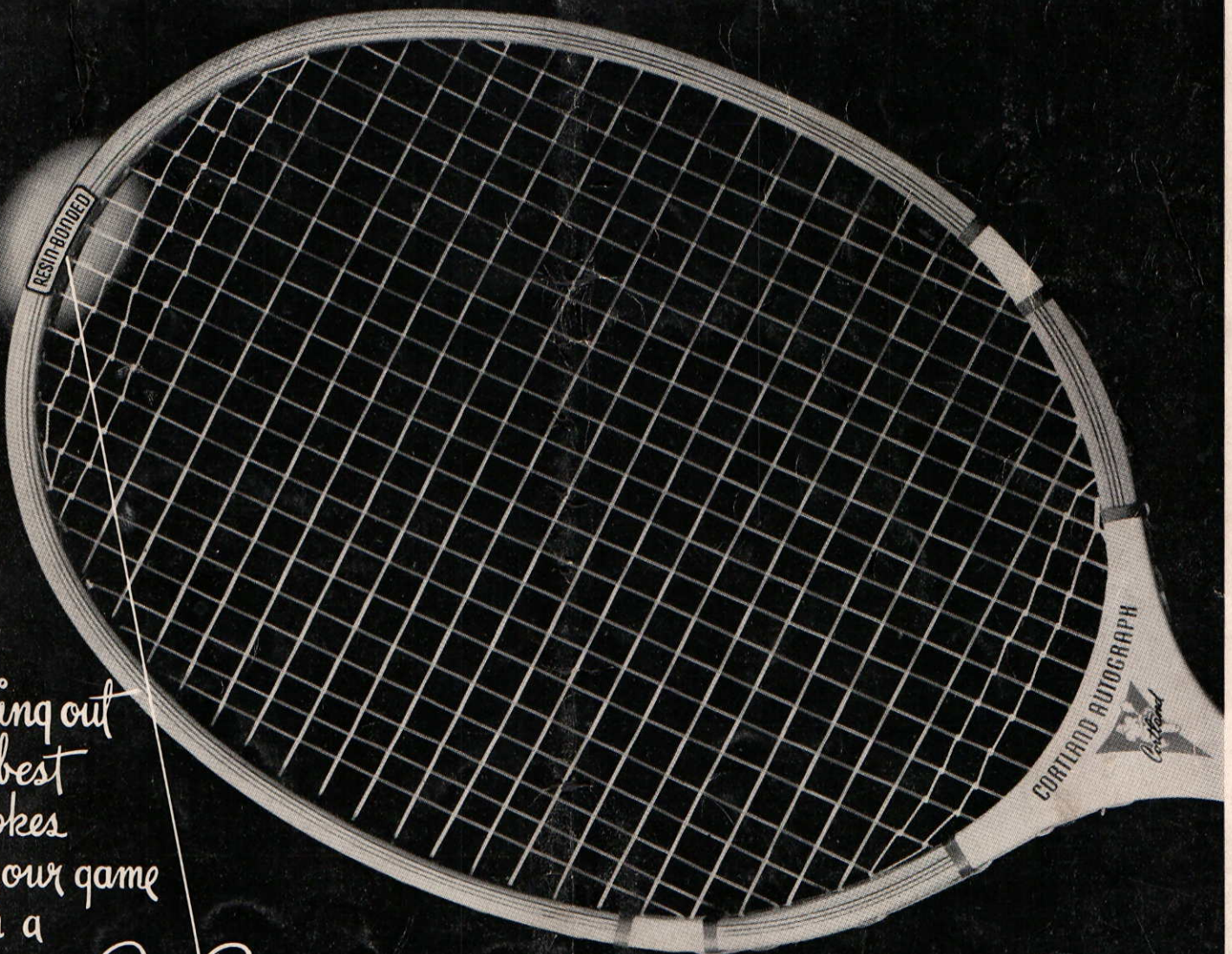


VOL. 7

JUNE 1948

NO. 4

PRICE 10
AMERICAN BADMINTON ASSOCIATION
AMERICAN BADMINTON ASSOCIATION PG. 22



Bring out
the best
strokes
in your game
with a
Cortland Resin-Bonded badminton racket

CORTLAND LINE CO., INC.
75 E. Court St., Cortland, N. Y.

by *Sportcraft*

CUT THE COST
with
THE NEW
R. S. L.



FOR
INDOOR PLAY

Yes, it's made for indoor play. A marvelous long-wearing bird with a synthetic base that will play better and last longer than any other shuttlecock made. Withstands terrific punishment and hard wear under all playing conditions, ideal for schools and colleges —

It's Accurate and True in Flight

TIMPÉ
SHUTTLECOCKS

Solves the Problem for a Long Playing Bird
at Low Cost

Manufactured by R. S. L. Shuttlecocks Co., Ltd., Altoona, Pennsylvania

PLAY YOUR BEST WITH
SPORTCRAFT BADMINTON RACKETS
QUEENS BADMINTON RACKETS
KEN DAVIDSON BADMINTON RACKETS

GENERAL *Sportcraft* COMPANY, Ltd.

215 FOURTH AVENUE

NEW YORK, N. Y.

NOTHING
COULD BE
FINER

R·S·L
TOURNEY
SHUTTLECOCKS

For the best game in any kind of a Tournament.

The official bird in the United States National Badminton Championships of 1947 in Los Angeles.

ASK YOUR DEALER
FOR

R·S·L
SHUTTLECOCKS

They're the Best

or Write

U. S. DISTRIBUTORS

GENERAL *Sportcraft* COMPANY, Ltd.

215 FOURTH AVENUE

NEW YORK, N. Y.



BIRD CHATTER



AMERICAN BADMINTON ASSOCIATION

Vol. 7

JUNE, 1948

No. 4

Season End Committee Reports Show Progress New Proposals for 1948-49 Need Support of All

Hand in hand with the playing of the National Championships each spring is that equally important phase of badminton activity, the final reports by the National Committees and the action on them by the Directors. Three Directors meetings were held on April 2 and 3 and a digest of these meetings indicate excellent progress on many of the ABA activities.

Ten Committee reports were considered and the preliminary mailing of most of them prior to arrival at Waco, Texas was a major new step in the endeavor to permit advance study by the Directors, thus facilitating prompt action at these all-too-short meeting periods.

Membership

1947-48 ended with 287 Club members of 18 Class A Association and 4 Class B Member Clubs, an increase of 21 clubs over the previous season. The Midwest Association showed, again, the largest number of clubs with 37, with Massachusetts, Washington, Connecticut and Metropolitan in order, each with over 20 members. The greatest gain was by Pittsburgh, 5 to 14 members.

Ranking

A full report of the policy of national ranking and the U.S. Official Ranking will be found on page 22 of this issue.

Rules

The suggested code of regulations for Referees, Umpires, and Linesmen used on a trial basis this season were officially adopted with minor changes made as a result of a season's operation and are the prescribed regulations for all tournament matches. A Code of Calls for Umpires was submitted for next season's operations with a recommendation for trial use in 1948.

Amateur Status

The entire set of regulations and a Code for Interpretation were adopted. Major changes covered—
1. The exempting of Physical Educators, "whose work covers the whole broad field of physical education unless they are specifically employed to teach racket games."
2. The rewording of the rule permanently eliminating anyone who became professional after April 5, 1946, to create a three-year period from that date before the rule becomes operative. Certain rewording of other rules and some simplification were accomplished and stress was laid on the full use of Class A sub-committees. Persons declared ineligible or professional by an authorized sub-committee are to be so recognized by all other sub-committees when considering eligibility.

Tournament

The major action taken here was the adoption of fees for sanctioning tournaments. 1948 local Tournament Chairman should be prepared to study these new regulations upon receipt of their details, which will be ready before the fall season. Fees run from \$1.00 to \$4.00 per tournament depending upon its scope and player eligibility for entrance. The new Committee was instructed to prepare a proper definition of a Championship event. A general policy regarding sanctioning of more than one tournament on the same date was adopted.

Junior Activities

Increased junior programs and tournaments were reported throughout the country and direct help to these activities was requested of the senior players in their respective localities. The report of the Second National Junior Championships was made in detail in the last issue.

Shuttlecock

Shuttle approval and adoption procedure were substantially the same as last season. Minor changes were adopted for 1948 with a strong attempt to be made to test and approve at an earlier date. Fees would remain the same.

Publicity

Many national releases were made by the chairman this season and information on sectional membership and activity was accumulated for overall information on number playing the game throughout the nation.

Thomas Cup

Actions of this Committee were reported in last issue. A new Committee has been appointed for the active international competitive play and fund raising. The new chairman is Warren Wheary and the members will be the Executive Committee of the ABA, chairman of the Ranking Committee, Roy Jordan and David Freeman.

Bird Chatter

The present staff of editor and business manager resigned after four years of service. Financially this publication is approaching a \$10,000 operation, has over 1300 paid subscribers and goes into 47 states and 10 foreign nations. New staff officials have been appointed for next year (see story on page 4).

These are the highlights of the committee reports and actions taken. New projects acted on and considered by the Directors include the publishing of a Badminton Guide, increase in dues of members from \$2.00 to \$4.00 per club, the refusal to open our National Championships to players of other nations and of course, our entry into the Thomas Cup International Competition. Thus ended our twelfth year of operation. Sound administrations have provided a real basis for normal, healthy expansion with the proper controls, a good omen for the future.

Bird Chatter

Published by the American Badminton Association for its members and those interested in the game.

Issued four times per season

Subscription — \$1.00 per season
Single copy — 35c

Editor - Donald Richardson
20 Wamesit Rd., Waban 68, Mass.
Business Manager - John E. Garrod
47 Colburn Road
Wellesley Hills 82, Mass.

Swan Song of Present Staff Introducing the New Regime

Scene—Bird Chatter room, 3rd floor, 20 Wamesit Road, Waban.

Properties—1 desk covered with papers and usual desk supplies, 1 card table—papers, ditto, 1 couch—pictures and papers ditto, 1 typewriter table and typewriter, 2 file cabinets, 1 arm chair, 1 straight chair, ash-trays everywhere; 2 half filled hi-ball glasses.

Actors—Editor Don and Business Manager John.

Don—Well, John, this is our swan song issue and by the looks of our correspondence we'll have more material than we can possibly use. Still quite a number of tournament results besides the Nationals, the report from the Waco Annual Meetings, Ranking report, more Thomas Cup data and flocks of photos, mostly from that bearcat Bob Noble of Southern California. Some material too local or too old to use, I'm afraid, but we'll squeeze all we can in. What a change from four years ago, when we took this job and really had to hunt for material. Suppose we'll have our usual struggle on the make-up and perhaps disappoint a few correspondents by cutting here and there. What's the ad situation?

John—Not too bad. Most everyone in as per last issue and plates and copy about all OK'ed by the advertisers. They are doing a good job on getting in their material. Hope they think their support has been worth while. Most of them have stuck to us during our growing pains and if we had time to write them all they should know that they have played a substantial part in the nation's badminton growth. The ABA is grateful for their help and I believe it has been for our mutual benefit.

Don—I'm sure our circulation has seen to that and will do even better. How are our subscriptions to date?

John—They have come along a bit better than we believed would be the case the early part of the year, about one-third better than last year, due to the Midwest program and some loyal workers in various areas. I've extended our thanks to many in recent letters but time does not permit contact with all of them who deserve our sincere appreciation for their work.

Don—OK for this issue situation now. The recent letters from Prexy Tim Royce are the best news I know of. Our resignations in Waco from the Bird Chatter operation and the consequent problems for our successors are now settled, and its certainly a big relief to me, personally, and a fine thing for the ABA. Due credit is due Carl Loveday and Ed. Shields for their offer, made at Waco, to take over the Bird Chatter operations next season. They were most sincere in their preliminary plans for an expanded operation but I can't help but feel that we should continue operations on the same general basis as in the past, even though it may be considered on the conservative side. When the day comes we have a permanent secretary who can devote his full time to the job, then we can go all out nationally, knowing that we have a sound stable background.

John—My thoughts are the same. We have made steady, though perhaps slow, progress since Justin Canfield started this magazine some nine years ago. My three years wartime term as National Secretary and these years with you on our second phase of National publication, leave me optimistic that the new regime can now make the next step even bigger and better. The backing of our last two Presidents, Jim Crafts and Warren Wheary, has been a constant source of encouragement when we were struggling to get this baby of ours across to the badminton enthusiasts of the country.

Don—Have you the complete setup as to our new Bird Chatter Staff in that overloaded brief case.

John—I have most of the picture right here and it sounds better with every letter I receive. Bob Kildall of Seattle, last season's Chairman of the Publicity Committee, will be the Editor-in-chief, Milt Flaten, Business Manager, Gladys Mallory, Subscription Manager, Jim Paull, probably Assistant Editor and Steve Johnson the publisher. Steve, incidentally, is a real find. He has his own firm and is thoroughly familiar with all phases of publishing. His

tentative agreement with Bob is a swell break for Bird Chatter. There are others who have signified they will help Bob as he calls on them and I am much enthused over their wonderful activity to date.

Don—I'm not too surprised when I see Bob heading up the program. He has been the sparkplug in Seattle for some time. The Washington State publication was his original baby and he's been very much on the ball in his area and in his last season's first year on a National Committee. With the new ABA president and secretary in the backyard, the entire setup sounds most logical from a real administrative control angle. Are there any advance plans from him as yet?

John—There sure are. A new cover design and printed in two colors, cartoons here and there on the copy pages, a plan to have sub-editors in different sections of the country, subscriptions blanks or bills for next year mailed out early, feature sections on areas and clubs, badminton instruction, etc. It's really amazing how fast they have gotten underway.

Don—What about format and ad rates?

John—The magazine will still be printed letterpress, with the format about as it is now. The ad rates and subscription rates will not be increased, despite higher costs. We are going to give something to our backers and not take anything more until we are absolutely forced to.

Don—You know, I can really sleep after this most encouraging discussion, even in the face of problems we don't broadcast as alibis. We are behind our schedule for issuance again. I hope the new Editors will not be faced with the time element problems we have had this season. No one is more aware than I that our last issues have been behind schedule. It was inevitable that we turn the job over to persons who were, perhaps, better situated to keep pace with the date of issuance. When this issue is out and I then have some time I hope to personally write many of those who were so helpful to us and whose letters we have been unable to answer due to the steady pressure of this publishing work. While we won't have the active work next year, I know I speak for us both that we will assist the new regime.

John—Agreed and amen. Here's to our finis.

Scene ends with elbows raised and glasses come down empty.

Thomas Cup Draw Made U. S. Has Bye

Canada and India will meet in the first test of international competitive play in the American Zone, with the United States meeting the winner to decide the Zone Champion. This information was cabled President Royce directly after a meeting of the I.B.F. Committee on Management of the International Competition held June 30th. Final dates of both matches (ties is the official lingo) have not been received but it is anticipated they will be held between December 3-11, 1948. The winner will travel to London for the Inter-Zone matches to be played.

There the winners of the Pacific and American Zones will meet in the preliminary round with the winner to play the European Zone Champion for The Thomas Cup Trophy and title "Champion Nation."

Notification of the date for our American Zone Tie will be forwarded to all Class A Association for their opportunity to bid for the holding of this final Intra-Zone Tie.

The Editor wishes to report one very nice letter from Mrs. Maude M. Stephens of New York City who heartily endorses our team playing these matches. Most graciously she stands ready and waiting to "come across" with funds for the Patrons Association to be used for financing our part. What happened to you others, aren't you back of this major endeavor by our Association? Swamp me with letters—I'll read every one of them.

American Badminton Association Officers Season of 1948-49

President—T. M. Royce, 1801 Smith Tower, Seattle 4, Wash.
1st Vice President—Donald Richardson, 20 Wamesit Road., Waban 68, Mass.
2nd Vice President—W. Harry Vaughan, 746 DeKalb Ave., N.E., Atlanta, Ga.
Secretary-Treasurer, Hamilton Law, 12014 Fourth Ave., Seattle 1, Wash.
Editor—Bird Chatter, Robert E. Kildall, 1911 5th Ave. W., Seattle 99, Wash.

International Badminton Federation Representative, Humphrey F. Chilton, Gipsy Lane, Marlow, Bucks, England.

DIRECTORS

REGION	Director	Address	Term Expires
REGION 1— <i>New England Region</i>	Donald Richardson, 20 Wamesit Rd.	Waban 68, Mass.	1949
	John E. Garrod, 47 Colburn Rd.	Wellesley Hills 82, Mass.	1950
	Helen L. Gibson, 84 Leonard St.	Stamford, Conn.	1951
REGION 2— <i>Middle Atlantic Region</i>	Herman Oppenheim, 347 Warwick Ave.	Mt. Vernon, N. Y.	1949
	Millard C. Dorntge, 747 Main St.	Buffalo 3, N. Y.	1950
	Joel P. Baker, 6060 River Rd., N.W.	Washington 16, D. C.	1951
REGION 3— <i>Southern Region</i>	Adon N. Smith, III, 131 Brevard Ct.	Charlotte 2, N. C.	1949
	W. Harry Vaughan, 746 DeKalb Ave., N.E.	Atlanta, Ga.	1950
	Louis H. Brown, 3206 Rugby Rd.	Chattanooga, Tenn.	1951
REGION 4— <i>Midwestern Region</i>	Warren Wheary, 1805 55th Ave.	Chicago 50, Ill.	1949
	Roy W. Jordan, 320 North Central Ave.	Clayton 5, Mo.	1950
	Victor P. Houriot, 3712 Rawnsdale Rd.	Shaker Heights, Ohio	1951
REGION 5— <i>Western Region</i>	Eugene Tenney, Homette #43, 7th & Dutton	Waco, Texas	1949
	Nick Roberts, c/o Republic National Bank	Dallas, Texas	1950
	George D. Harman, Continental Oil Co.	Ponca City, Okla.	1951
REGION 6— <i>Pacific Region</i>	T. M. Royce, 1801 Smith Tower	Seattle 4, Wash.	1949
	LeRoy C. Erikson, 118 N. Brand Blvd.	Glendale 3, Cal.	1950
	Osgood H. Hilton, Jr., 895 Valle Vista	Vallejo, Cal.	1951

New Officials Selected at Western N. Y. Meeting

At the annual meeting of the Directors of the Western New York Badminton Association held in the parlors of the Buffalo Athletic Club the following officers were elected to serve for a term of one year: President, Phil Michlin of Rochester; 1st Vice-president, John G. Buddemeyer, Buffalo Badminton Club;

2nd Vice-president, Alice Brown, Buffalo Athletic Club; Secretary-Treasurer, Edwin G. Ireland, Buffalo Badminton Club. Three new Directors were elected and one Director re-elected, each to serve a term of three years. They are: Richard Salemi of the Triad Racquet and Shuttle Club, Douglas Emore of the Kenmore Presbyterian Club, Jack Bowling of the Buffalo Badminton Club, and Alice Brown of the Buffalo Athletic Club.

President Michlin announced the following appointments:

Rules and Officials Committee: Charles Horton, Chairman; Alan Hickok, Rochester, Vice-Chairman; Publicity Committee: Jack Bowling, Chairman; Gene Drullard, Vice-Chairman; Tournament Committee: Jack Buddemeyer, Chairman; Ranking Committee: Del Altenburg, Chairman; Al Robson, Vice-Chairman; Membership Committee: Edwin Ireland, Chairman; Alan Hickok, Vice-Chairman; Junior Committee: Alice Brown, Chairman; George Brown, Vice-Chairman; Inter-Club Committee: Doug Emore, Chairman; Dick Salemi, Vice-Chairman.

Correspondent—Jack Bowling

SUPPORT YOUR MAGAZINE—TEAR OUT—FILL IN—MAIL

BIRD CHATTER SUBSCRIPTION

Price \$1.00 - Per Season — Single Copies - 35 Cents

I enclose \$ for Years Subscription

Starting Date

Name

Address
No. Street

City
Zone State

I am a member of Club

FILL IN AND MAIL PROMPTLY TO

Mr. John E. Garrod, 47 Colburn Road, Wellesley Hills 82, Mass.

Visual Badminton Program Stressed by Minnesota Ass'n.

The ambitious promotional program of the Minnesota District Badminton Association among high schools and clubs has had most interesting results.

A total of 5522 persons have seen the "How to Play Badminton" film so ably presented by Ken Davidson. The Minneapolis Public Schools have announced that 5222 high school girls were shown the film from April 27-May 15. Earlier in the season two boys high school groups, two club groups and two sections of men and ladies physical education teachers numbering 100 were also shown this film.

The officers for next season were recently elected, as follows: President, Harold R. Anderson, St. Paul A. C.; First Vice-president, Ellis K. Sherman, Minnesota A. C.; Second Vice-president, Melvin K. Pass, University of Minnesota; Secretary-Treasurer, Carl A. Berg, Minnesota Y. M. C. A.

Editor's Note: We are indebted to Carl Berg for the above information.

Southern California Intercollegiate Draws Over 100 Players

An invitational Intercollegiate Badminton Tournament was held at the University of Southern California, May 7, 1948.

Eight schools entered the tournament with approximately one hundred men and women participating. Singles, doubles, and mixed doubles were run off.

University of Southern California garnered most of the Championships with University of California at Los Angeles and Fullerton Junior College striving for second place honors.

This tournament was strictly an "Ice Breaker," as no intercollegiate tournaments have been played in Southern California since before the war.

Miss Aidith Frosh, University of Southern California Faculty Sponsor, and Ben Ferguson, University of California at Los Angeles Sponsor, initiated and conducted the tournament with the assistance of Janie Held, University of Southern California Badminton Club President.

Correspondent — Ben F. Ferguson

DiLeone, Marg Wright Lead Ohio Champs

Retaining the titles they won last year the singles champions of Ohio are Ed DiLeone and Marg Wright who were pressed hard at the Ohio State Closed Championships held at the L. B. Harrison Club, Cincinnati, March 13, 14.

Mrs. Bob Stille likewise retained her Ladies' Doubles title partnering Marg Wright, and she and her husband became the new Mixed titlists.

Men's Singles

Ed DiLeone def. Bob Stille, 15/12, 15/13.

Ladies' Singles

Marg Wright def. Mrs. Bob Stille, 9/12, 11/5, 11/4.

Men's Doubles

Norm Atchison-Stan Sangdahl def. Bob Stille-Lew Rickert, 15/8, 15/8.

Ladies' Doubles

Marg Wright-Mrs. Bob Stille def. Ann DiLeone-Jane Sterling, 15/7, 18/17.

Mixed Doubles

Mr. and Mrs. Bob Stille def. Mr. and Mrs. Ed. DiLeone, 18/14, 15/12.

Veterans' Doubles

Lew Rickert-Al Kuder def. Tom Lavern-M. DeVorkin, 15/8, 15/10.

Correspondent — Robert E. Stille

THE

Jack Purcell Court Shoe
for

Badminton, Squash, Tennis

Famous Jack Purcell Badminton shoes are now available — for both men and women — at your favorite sporting goods dealer or pro shop.

"P-F" — Posture Foundation — is a patented orthopedically correct foot support to help speed up your game. Built into Jack Purcell shoes, "P-F" keeps the bones of the foot in their natural position — decreases muscle and leg fatigue and increases staying power. Sponge cushion heel gives added protection and comfort.

Special crepe sole gives positive traction, and extra quality materials and reinforcements assure long wear.



with **P.F.***

* "P.F." means POSTURE FOUNDATION

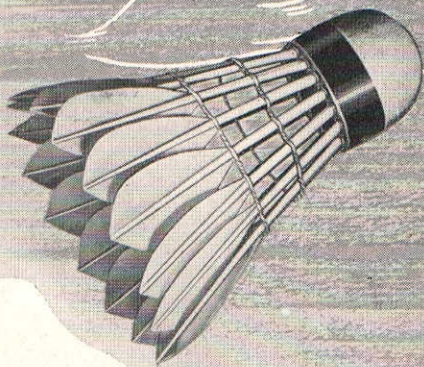
The B. F. Goodrich Company

Footwear Division

Watertown 72, Mass.

PENNSYLVANIA BLUE GOOSE

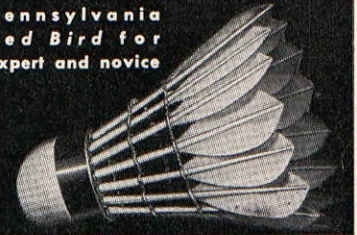
Perfect in Flight



Pennsylvania
Blue Goose for
tournament players



Pennsylvania
Red Bird for
expert and novice



Pennsylvania
Volley for practice



The Best Bird Built



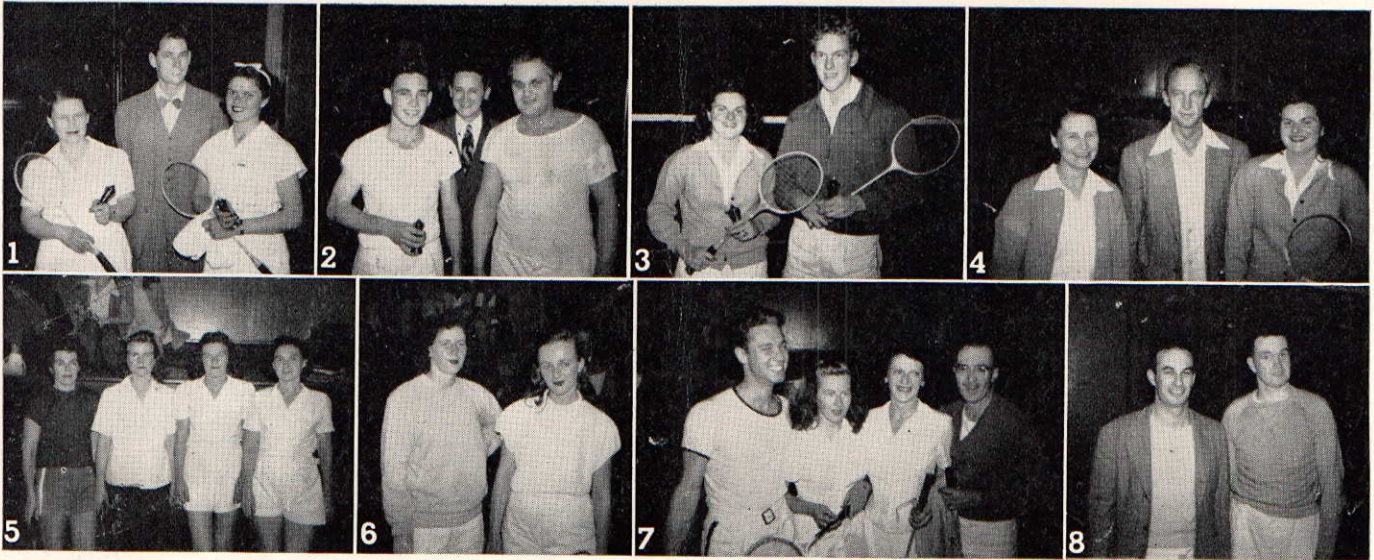
PENNSYLVANIA RUBBER COMPANY

The World's Largest Manufacturers of Tennis Balls

Penn-Craft Park Jeannette, Penna.

MEMBER, ATHLETIC INSTITUTE

No. Cal. Class B Tournament Brings Out Many New Players



Left to right—1. Ladies' Singles, Alice Gowen, Norman Blanchet referee, Judy Coffey; 2. Men's Singles, Jerry Skillicorn, Tom Ough, referee, Walter Brandt; 3. Mixed Doubles, Charlene and Bill Burgess; 4. Ladies' Doubles, Alice Gowen, Don McCorkle, referee, Charlene Burgess; 5. Consolation Ladies' Doubles, Eleanor Reynolds, Jean Lusk, Ruth Horwath, Doris Reed; 6. Consolation Ladies' Singles, Janie Winton, Mary West; 7. Consolation Mixed Doubles, Lyman Nickel, Annette Zaepffel, Carol Mather, Al Childers; 8. Consolation Men's Doubles, Walter Hunter, Richard Kauffman.

Many entirely new players were among the 97 entries at the Class B Tournament of the Northern California Badminton Association held at the Fremont High School, April 10, 11.

Correspondent — Mrs. Helen Ough

RESULTS

Men's Singles

Jerry Skillicorn def. Walter Brandt, 15/8, 6/15, 17/14.

Ladies' Singles

Judy Coffey def. Alice Gowen, 11/2, 11/2.

Men's Doubles

Bob Hamsher-Walter Brandt def. Ken Bogel-Gareth Ott, 15/11, 15/12.

Ladies' Doubles

Alice Gowen-Charlene Burgess def. Gunver Leahart-Dottie Wemmer, 15/2, 15/7.

Mixed Doubles

Bill and Charlene Burgess def. Frank Crowhurst-Octavia Pratt, 18/17, 13/15 15/10.

Veterans' Doubles

Jack Hildreth-Walter Jensen def. A. L. Laws-Bill Pimentel, 15/5, 15/10.

Consolation

Men's Singles

Lyman Nickel def. Robert Bebb, 15/11, 6/15, 17/15.

Ladies' Singles

Mary West def. Janie Winton, 11/8, 11/4.

Men's Doubles

Walter Hunter-Richard Kauffman def. Thomas Wong-Robert Poon, 15/7, 8/15, 15/11.

Ladies' Doubles

Eleanor Reynolds-Jean Lusk def. Ruth Horwath-Doris Reed, 15/14, 15/11.

Mixed Doubles

Lyman Nickel-Annette Zaepffel def. Al Childers-Carol Mather, 13/15, 18/14, 15/12.

St. Louis, Chicago Players Dominate Indiana Open

The Indiana State Badminton Association finished a very successful year under the direction of Ralph Matthews, President; Catherine Wolf, Vice-president; and Ed Stanton as Secretary and Treasurer.

The Indiana State Open Tourney was held at Purdue University with one of the most impressive entries seen in the mid-west. Most of the leading players from Chicago, St. Louis, Detroit and Cleveland were entered.

The Men's Singles final was an all St. Louis affair with Casey beating Smith, 15/5, 18/14.

The Ladies' Singles was won by unseeded Virginia Smith of St. Louis from Wilma Shortz of Chicago, 6/11, 11/3, 11/9.

The Men's Doubles went to Aderholt and Perkins of St. Louis when

they defeated Pontich and Lafayette of Chicago, 15/5, 15/13.

Virginia Smith, St. Louis, and Thelma Burdick, Chicago, teamed together to defeat Browne and Sirwaitis of Detroit, 15/11, 15/8.

The Mixed Doubles title went to Chicago when Joe Tiberi and Thelma Burdick defeated Mr. and Mrs. Smith of St. Louis by a score of 15/11, 15/7.

The Veterans' Doubles was won by Bud Frazer and Lyle Shortz over the Detroit team of Gesamon and Mowry.

The Indiana State Closed Tourney was held in South Bend. In the class A bracket all the players successfully defended their titles.

Class A

Men's Singles

Roy Nusbaum, Wakarusa, def. Ed. Stanton, South Bend, 15/8, 15/4.

Ladies' Singles

Betty Matthews, Indianapolis, def. Doris Hurt, Purdue U., 11/4, 12/10.

Men's Doubles

Roy and Harold Nusbaum, Wakarusa, def. Ed. Stanton, South Bend, and Ralph Matthews, Indianapolis.

Ladies' Doubles

Betty Matthews and Doris Hurt, Indianapolis, def. Martha Pieszak and Ruth Gadomski, South Bend, 15/2, 15/2.

Mixed Doubles

Roy Nusbaum and Doris Hurt def. Mr. and Mrs. Stanton of South Bend, 15/7, 15/3.

Class B

Ladies' Singles

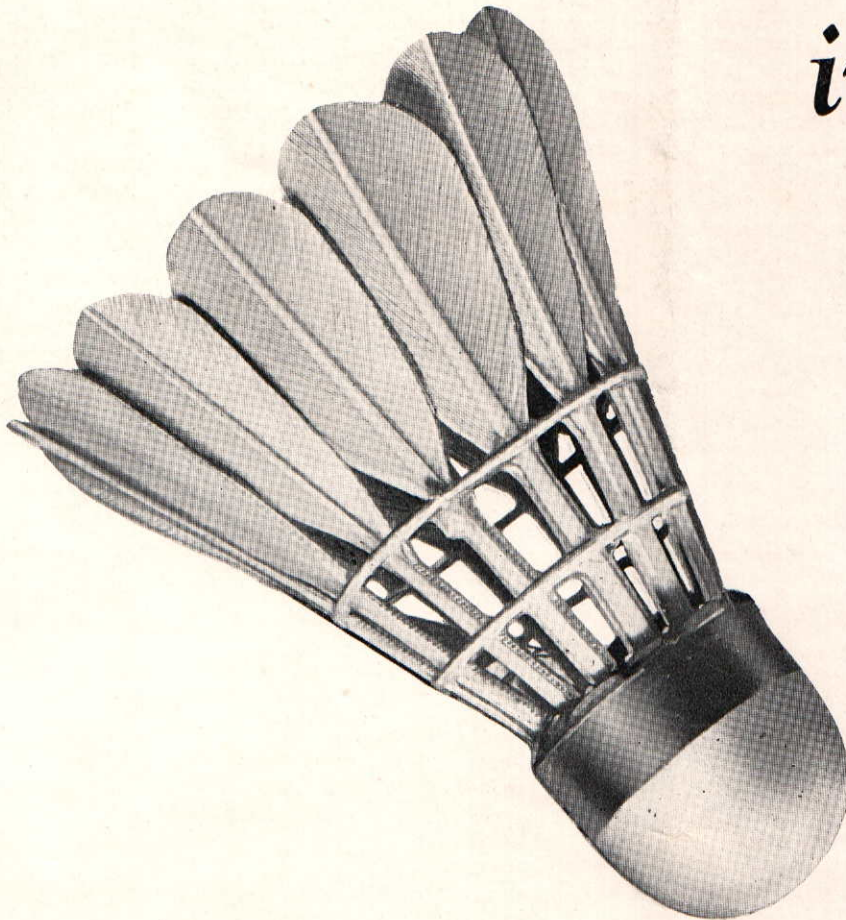
Martha Pieszak def. Ruth Gadomski, 11/5, 11/1.

Ladies' Doubles

Pieszak and Gadomski def. the St. Mary College team of Fleming and Brady, 15/2, 15/11.

Finest Feathers

in Flight!



SPALDING TOP-FLITE SHUTTLECOCKS

Spalding shuttlecocks . fastest birds in Badminton captivity . . . winging their way to the nation's tournaments. Note those choice uniform feathers, triple-stitched for longer wear. They'll nest in many a big trophy this year.



Spalding



SETS THE PACE IN SPORTS

The First Lady of Badminton

Ethel Marshall - U.S. Champion, 1947, 1948



Ladies' Champion—Ethel Marshall

The United States Ladies' Champion is a real American girl. Almost petite, about 5' 3", and probably not over 105 lbs. (no, we didn't ask her), Ethel Elizabeth Marshall of Buffalo, New York somewhat belies, perhaps, the mental picture of an athletic champion.

In the intervening years since Mrs. Del Barkhuff, on the diminutive side, also, won the first title in 1937 and Ethel won her initial U.S. title in 1947, the ladies' champions have been taller and have generally had more of an athletic physique than the present champion.

Perhaps it has been this lack of height which led people to consider her unable to reach the top. If this was a true factor in singles play, then all the more to her credit for her ability to push this disadvantage aside. But badminton champions, one discovers, come from no particular physical mold. They do, however, all have the characteristics of free stroking, good footwork, alert strategic minds and the will to win. In most cases, too, it has taken hours of informal play and practice combined with plenty of tournament competition with many a beating enroute to the top position.

At 24 years of age, with five strenuous years behind her, Ethel Marshall, now has equaled the records of Mrs. Barkhuff and Mrs. Evelyn Boldrick Howard in having twice won the National singles title. Only once during the 1947-48 season was she pressed to the limit. In the semi-finals of the Nationals she

dropped her only game in tournament play this season, this to Mrs. Patsy Stephens, perhaps the youngest player in the list of top players in the country and one of the few who have a record of a win over Ethel in the past two seasons.

Working as a stenographer for the Bell Aircraft Corporation with a five-day week gives her opportunities to travel to week-end tournaments throughout the East and Canada. In addition to five events held in the Western New York area she entered the large New England and Ohio open tournaments and four times crossed the border playing in Montreal, Quebec; and Toronto, Stratford and Niagara Falls in Ontario.

In twelve tournaments in which she competed in either singles, ladies' or mixed doubles she has ten singles, five ladies' doubles and four mixed doubles victories, and six times was a runner-up in the doubles events.

She is the second champion of her sex to be left-handed, a factor which is ever in debate for its advantages or disadvantages in playing right-handed players. Her style is patterned to some degree after the Jack Purcell Canadian style which plays the round the head shots from her backhand corner in preference to backhand drops and clears and her speed of foot helps her to handle this style of play. She has an effective smash, strong clears, good drop shots and can play the net with equal ability.

If a weakness can be attributed to a champion then it is in her serve. While quite consistent in in-court accuracy and depth it lacks the height generally regarded as the perfect serve and consequently does not give her as much time for positioning before contact is made by her opponent.

In the past season her mixed doubles play has shown a tremendous development and when partnered with Bobby Williams they were an even bet as a winner. Only the National Champions, Clint and Patsy Stephens have taken their measure in close matches. It is definitely believed that their 1948 National ranking would have been considerably higher had they participated as a team in the Nationals. While she and her partner Bea Mass-

man make a strong ladies' doubles team it is doubtful that they would be real contenders for top National honors. This appears due in part to lack of decisive power and the difficulty of a right- and left-handed player to perfect team position play.

Her badminton interest has spread to personal promotion and assistance to juniors in her locality and she strongly believes "that the Junior Nationals will go a long way in bringing home the fact that badminton is really a younger people's game and not just for the older folks as so many youngsters think."

Younger players may well pattern themselves on our most modest American Champion in both her style of play and excellent sportsmanship.

Her season's tournament play was as follows:

1. Harrison Memorial Mixed Doubles at Niagara Falls, Ontario—with Bobby Williams defeated Kay Kittner and Bob Herdison, 15/8, 15/8.
2. Montreal AA Open Tournament—at Montreal, Quebec.
 - a. Singles, defeated Patsy Stephens, 11/3, 12/10.
 - b. Runner-up in Ladies' Doubles with Bea Massman defeated by Patsy Stephens and Evelyn Roberts (Toronto), 7/15, 15/10, 15/11.
3. Strathgowan Invitation at Toronto, Ontario.
 - a. Singles, defeated Joan Hennessey (Toronto), 11/3, 11/1.
 - b. Semi-finals, Ladies' Doubles with Bea Massman defeated by Barbara Ince and Joan Warren (Toronto), 18/17, 5/15, 15/8.
4. Western Ontario at Stratford, Ontario.
 - a. Singles, defeated Bea Massman, 11/2, 11/2.
 - b. Won Ladies' Doubles with Bea Massman defeated Shirley Gladding and Beverly Crane (Stratford), 15/3, 15/1.
5. Buffalo Athletic Club Invitation at Buffalo, New York.
 - a. Singles, defeated Patsy Stephens, 11/3, 11/9.
 - b. Runner-up in Ladies' Doubles with Bea Massman defeated by Patsy Stephens (Baltimore) and Marion Armstrong (Toronto), 11/15, 15/11, 18/15.
 - c. Runner-up in Mixed Doubles with Bobby Williams defeated by Mr. and Mrs. Clint Stephens, 11/15, 15/10, 15/8.
6. Ohio State Open at Cleveland, Ohio.
 - a. Singles, defeated Eleanor Coombs (Chicago), 11/5, 11/5.
 - b. Runner-up Ladies' Doubles with Bea Massman defeated by Eleanor Coombs and Thelma Burdick, 11/15, 15/9, 15/6.
 - c. Mixed Doubles with Bobby Williams defeated Eleanor Coombs and Bill Lafayette, 15/8, 15/11.
7. Niagara Falls Country Club Invitation at Niagara Falls, N. Y.
 - a. Singles, defeated Eleanor Coombs, 11/7, 11/3.
 - b. Ladies' Doubles with Bea Massman defeated Eleanor Coombs and Thelma Burdick, 15/7, 15/5.

(Continued on next page)

(Continued from page 10)

c. Mixed Doubles with Bobby Williams defeated Eleanor Coombs (Chicago) and Grant Henry (Toronto), 15/12, 15/11.

8. New England Championships at Boston, Massachusetts.

a. Singles, defeated Patsy Stephens, 11/8, 11/3.

b. Ladies' Doubles—semi-finals with Bea Massman lost to Zoe Yeager-Eleanor Raymond, 8/15, 15/9, 18/15.

c. Mixed Doubles with Bobby Williams lost in finals to Mr. and Mrs. Stephens, 18/13, 15/13.

9. Eastman Kodak Invitation Doubles at Rochester, New York.

a. Ladies' Doubles with Bea Massman defeated Alice Brown and Kay Kittner (Buffalo), 15/4, 15/4.

b. Runner-up—Mixed Doubles with Cliff Schmidt (Rochester) defeated by Alice Brown (Buffalo) and Grant Henry Toronto), 15/7, 15/5.

10. Western New York Open at Niagara Falls, New York.

a. Singles, defeated Bea Massman, 11/6, 11/2.

b. Ladies' Doubles with Bea Massman defeated Alice Brown (Buffalo) and Margaret Michlin (Rochester), 15/11, 15/7.

c. Mixed Doubles, with Bobby Williams defeated Alice Brown and Del Altenburg (Buffalo), 15/8, 15/3.

11. United States Nationals—Waco, Texas (see Tournament results).

Mack Triple Winner at Western N. Y. Class Tourneys

Robert Mack of the Triad Racquet and Shuttle Club of Buffalo was a three time winner in the Class B Tournament of the Annual Western New York Badminton Association's Class B and Class C Tournament held this year on the courts of the Kodak Badminton Club at Rochester, New York on April 16-19. He captured the Men's Singles title in the outstanding event of the day defeating his doubles partner, Robert Eckis — Western New York Golf luminary — in three games which were so hard fought that both contestants were completely worn out and had trouble continuing play in the other events.

12. Genesee Valley Invitation at Rochester, New York.

a. Singles, defeated Eleanor Coombs, 11/1, 11/1.

b. Ladies' Doubles with Bea Massman defeated Alice Brown (Buffalo) and May Helwig (New Rochelle), 15/11, 15/6.

c. Quarter-finals, Mixed Doubles with Del Altenburg (Buffalo) defeated by May Helwig and Ed Shields (New Rochelle), 15/8, 9/15, 15/11.

RESULTS

Class B

Men's Singles

Bob Mack (Triad) def. Bob Eckis (Triad) 12/15, 18/14, 18/17.

Ladies' Singles

Jane Shaw (Syracuse) def. Marg. Michlin (Kodak), 11/1, 11/2.

Men's Doubles

Mack-Eckis def. Dick Salemi (Triad)-Jack Christman (Twin City B.C.), 15/10, 15/10.

Ladies' Doubles

Evie Scharmach (Triad)-Alice Jackson (Mercury) def. Marg. Michlin-Jane Moriarity (Kodak), 18/14, 15/12.

Mixed Doubles

Bob Mack-June Traquair def. Bob Eckis-Evie Scharmach, 7/15, 15/12, 15/6.

Class C

Men's Singles

Errol Mews (Kodak) def. J. Marcello (Kodak), 18/14, 15/12.

Ladies' Singles

Jae Garmony (Kodak) def. J. Harris (Kodak), 11/3, 11/1.

Men's Doubles

M. Stewart-W. Morse (Bath) def. E. Mews-Andy Barnett (Kodak), 15/7, 15/3.

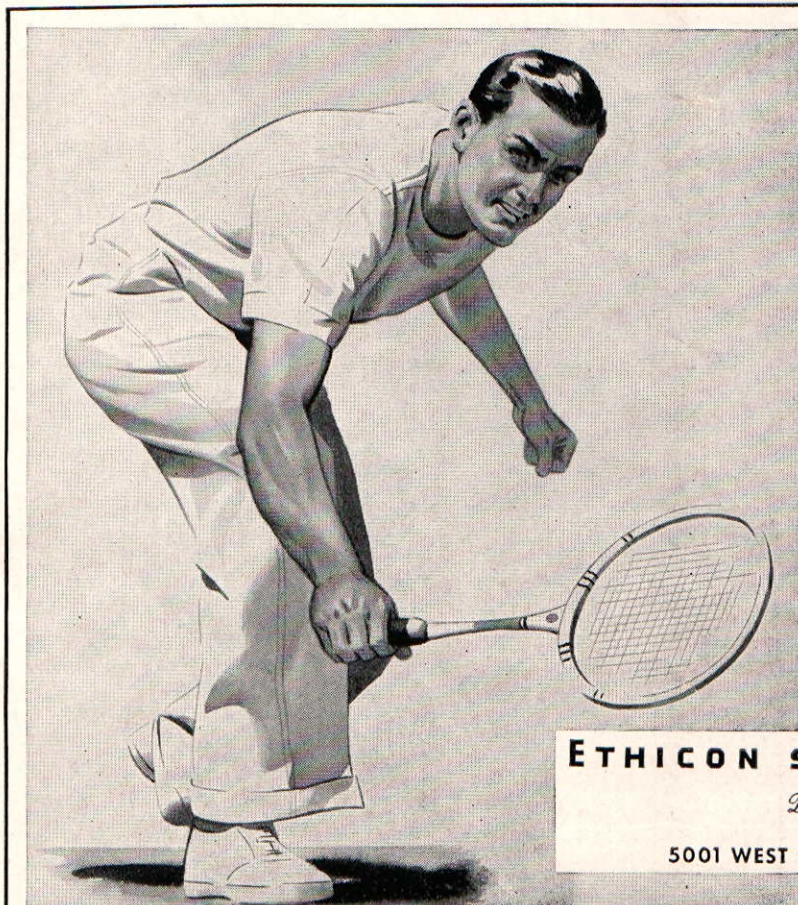
Ladies' Doubles

J. Ferraraccio-Ann Mack (Triad and Niagara Falls) def. Esther Szulist-Delores Zintek (Triad), 12/15, 18/14, 15/7.

Mixed Doubles

W. Struder-Betty Ackley (Mercury) def. E. Mews-Jae Garmony (Kodak), 18/14, 10/15, 15/9.

Correspondent — Del Altenburg



• *Chrome-Twist* will do as much for your Badminton as it did for your Tennis

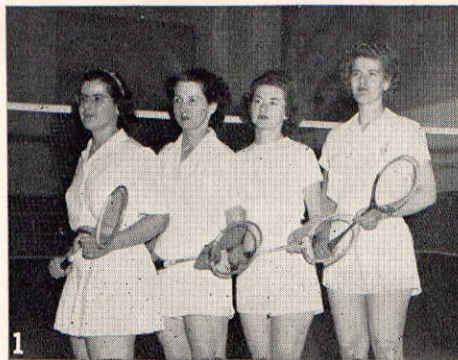
**Chrome-Twist
Racket Gut**

ETHICON SUTURE LABORATORIES

Division of Johnson & Johnson

5001 WEST 67th STREET . . . CHICAGO 38, ILLINOIS

Amazing Entry Features Washington State Closed Champs Three Game Battles Stand Out in Class A



Left to right—1. Ruth Bernard, Rowena Lennant, Virginia Anderson, Marge Gildseth; 2. Jim King, Bob Stenning, Kathleen Collins, Donna Mallory, Dick Bonesteel, John Rose; 3. Clarence Anderson, Dick Hayden, Joe Johnson, Howard Crow.

Even a late season tournament will not down the competitive spirit of badminton players as is attested by 253 seniors and juniors entering the April 16-18 Washington State Closed Championships held at the Green Lake Field House in Seattle.

Four hundred and sixteen entries of which 120 Juniors made up 170 of them, was the unexpected fact facing the tournament committee and indicates the splendid growth of badminton in the Nation's new badminton capital following the recent election of Mr. T. M. Royce of Seattle as the new ABA president.

Rupert Topp maintained his edge on Bob Deacon in the Men's Singles but he had to come from behind to do it. In contrast, Mary Jean Bushell romped over Ruth Bernard and the perennial Vet champs Crow-

Johnson came through with a relatively easy victory.

All other major events were battles throughout and the Mixed was the rubber match for the Paull-Cruikshank and Deacon-Anderson quartet.

Correspondents—

Gladys Mallory, Bob Kildall

Men's Singles

Rupert Topp def. Bob Deacon, 9/15, 15/12, 15/9.

Ladies' Singles

Mary Jean Bushell def. Ruth Bernard, 11/1, 11/5.

Men's Doubles

Jim Paull-Rupert Topp def. Bob and Bill Deacon, 17/16, 7/15, 15/12.

Ladies' Doubles

Marge Gildseth-Virginia Anderson def. Gladys Mallory-May Jean Bushell, 15/10, 8/15, 15/3.

Mixed Doubles

Jim Paull-Maxine Cruikshank def. Bob

Deacon-Virginia Anderson, 6/15, 17/14 15/11.

Veterans' Doubles

Howard Crow-Joe Johnson def. Dick Hayden-Clarence Anderson, 15/5, 15/9.

Ladies' Handicap Doubles

Marion Ewing-Francis Jensen def. Fern Sarich-Dorothy Curry, 6/15, 15/12, 15/8.

Men's Handicap Doubles

Ken Harvey-John Sarich def. Henry Mahnkey-Wes Poeller, 12/15, 15/1, 15/3.

Mixed Handicap Doubles

Winners, Fern Sarich-John Sarich, 15/3, 12/15, 15/3.

Boys' Singles

Dick Bonesteel def. Jon Rose, 15/0, 15/4.

Girls' Singles

Jackie Compton def. June Meigs, 11/1, 11/7.

Boys' Doubles

Jim Ihrig-Bob Stenning def. Dick Bonesteel-Jon Rose, 15/10, 11/15, 15/9.

Girls' Doubles

Donna Mallory-Cathy Collins def. Norma Abbott-June Meigs, 15/6, 15/8.

The Manhattan Beach Club Makes Interesting History

Seventeen miles southwest of Los Angeles lies the small city of Manhattan Beach, Cal. It is one of a group of similar communities closely following the shoreline of the southernmost curve of Santa Monica Bay and the locality is known as the South Bay. From this South Bay was gathered the nucleus of interested people to form the Manhattan Beach Badminton Club, in the late 30's. In the year of 1940 the M.B.B.C. members gave a musical show and realized enough money to buy land and erect their own building with proper facilities both for Badminton and the parties for which the Club was noted. So this group is composed of Badminton enthusiasts and players and social members, which is unique in the annals of such organizations. In order to make

this building successful for Badminton playing three courts were built with men's and ladies' showers and dressing rooms and for the social side a comfortable lounge and kitchen facilities were added. Potential plans include a barbecue patio and a swimming pool with Manager's quarters.

On the fourth day of June, 1940 the Club was incorporated and the 140 members own the shares of stock. In addition to the stockholders, ten playing memberships were created for players who show promise and wish to represent the Club in Badminton tournaments. These playing members enjoy all privileges of the Club but do not participate in the voting or are not eligible for office.

This Fall will see the presentation of the Ninth Annual Open Tournament, and Badminton players from all of California are represented in this event. The Second Annual Mixed and Veterans' Mixed Doubles Tourney is held during the Summer and this event proved so successful last year that all Badminton players are looking forward to the next meet.

A special feature of all these tournaments is the Open House held before each event, and all entering players are welcome to come and practice on this day, and later a social evening is enjoyed in the Club lounge with M.B.B.C. members serving as hosts.

The Manhattan players were well represented at the recent Nationals in Waco, Texas by Marianna Gott, Dottie Hann, Thelma Scovil, Liz Anselm, Gil White, CC. "Moon" Mullin, and Bernice Marignan.

(Continued from page 12)

The problem of financing these entrants to the Nationals was met by the committee in charge in several interesting ways. Last July an Apache supper dance was given; a breakfast was held during the open Mixed Doubles Tournament in August and in March a most successful dance was given with the slogan "On to Waco" as the incentive. Roy Seawright, an M.B.B.C. member achieved a unique decorative effect on the walls of the Club by depicting in paper cutouts the journey of all California players to Waco.

The Board of Directors of the Club voted additional money to the funds raised which helped defray expenses of all the entrants. And now may we say in closing that our eager members are planning a dinner for members and guests during our current inter-club handicap matches, and the money realized will be reserved toward dispatching players to the Nationals next year.

Editor's Note: Sorry we haven't our correspondent's name. Pictures of the interesting designs created for "On to Waco" are in the files for anyone's perusal. We regret lack of space to print them.

Loveday, Ethel Marshall Win Genesee Valley Titles

National Champion Ethel Marshall and Carl Loveday won the singles titles at the 8th Annual Genesee Valley Club Invitation held April 11, 12.

Miss Marshall added a second win in the Ladies' Doubles event while Grant Henry of Canada had a pair to his credit also, taking the Men's and Mixed Doubles.

Bobby Williams of Buffalo pushed Montclair's Carl Loveday in the first game of the finals but was no match for the latter's superior forecourt play in the second game.

Men's Singles

Carl Loveday def. Bobby Williams, 15/12, 15/5.

Ladies' Singles

Ethel Marshall (Buffalo) def. Eleanor Coombs (Chicago), 12/1, 11/1.

Men's Doubles

Grant Henry (Toronto)-Harry Keating (Niagara Falls) def. Bobby Williams-Don Bechtel (Niagara Falls) 15/9, 15/10.

Ladies' Doubles

Ethel Marshall-Bea Massman (Buffalo) def. May Hellwig (New Rochelle)-Alice Brown (Buffalo), 15/11, 15/6.

Mixed Doubles

Grant Henry (Toronto)-Eleanor Coombs (Chicago) def. May Hellwig-Ed. Shields (New Rochelle), 15/1, 15/4.

Correspondent — George Armstrong

IMPROVE YOUR BADMINTON play with the new J. FRANK DEVLIN

AUTOGRAPHED BADMINTON PRODUCTS

USE THE ACCURATE, DURABLE DEVLIN BIRD



Season 1947-48

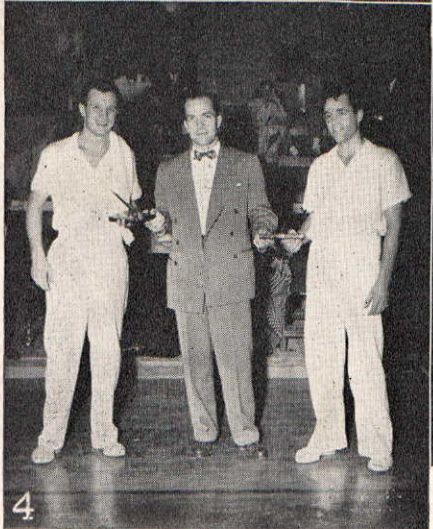
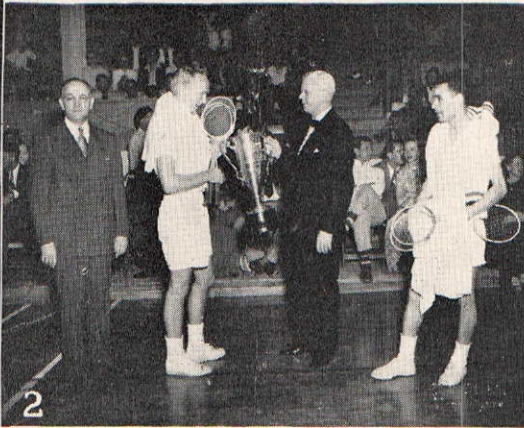
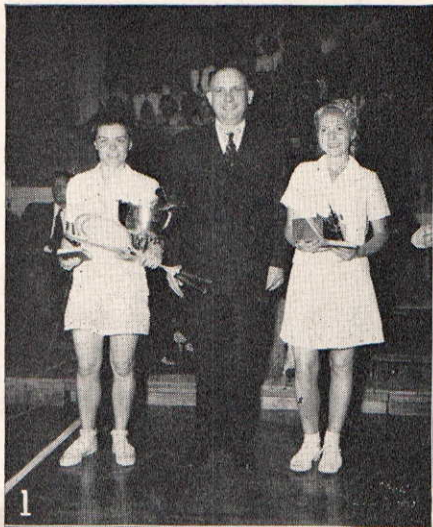
Approved for A B A
Tournament Play
by the
Shuttlecock Committee
American Badminton
Association
(Approval No. B104)

and the
DEVLIN RACKET

(Made in England)

Send your dealer's name to
**220 Horthorne Road
Baltimore 2, Maryland**

Dave Freeman, Ethel Marshall, Janet Wright - Mrs. Thelma Scovil, Repeat at 1948 National Championships - Waco, Texas, April 1, 2, 3



Left to right—1. Edith Marshall, Baylor President Dr. W. R. White, Mrs. Thelma Scovil; 2. Baylor Dean Dr. Monroe S. Carroll, Dave Freeman, ABA President Warren Wheary, Marten Mendez; 3. President Wheary "rides" the Badminton horse; 4. Clint Stephens, President of the Texas Badminton Association, Nick Roberts, Bobby Williams; 5. Former Vet Champion George A. McCook, Harry Hackett, "Pop" Hinds, Fred Fullin, Hulet Smith, Lewis Rulison; 6. Wynn Rogers, ABA Director George Harman, Dave Freeman.

The United States Championships' first visit to the Southwest was one of the most interesting to the contestants in the nine years of competition of this exciting occasion. Texan hospitality ably assisted by their close neighbors from Oklahoma left the pleasantest of memories as players from almost all the badminton centers of the country journeyed to Waco, Texas by train, auto and private and commercial airplanes.

Conducted by the Baylor Badminton Association and sponsored by the Texas Badminton Association and the Chambers of Commerce of Waco and Baylor, the Tournament, Annual Luncheon and Directors' Meetings were the busiest of affairs for the three days of April 1, 2, 3, and in many cases an extra day for those who arrived a day earlier for practice and administrative preparations.

Only a wise local committee decision to limit the nearby entries kept the entry from being over 200 contestants and thus, with few exceptions, the top players were in excellent competitive condition for the semi's and final rounds.

Last year's singles champions, Dave Freeman and Ethel Marshall showed marked superiority to come home winners in their specialties. It was nothing new for Dave for it was his sixth consecutive singles win but for Ethel it was only her second title and there was a strong feeling by many that she would have a major struggle to repeat. But the champions almost waltzed through their matches with Dave never losing more than seven points in any one game and allowing his five opponents only a total of 36 points. Ethel had a bit more of a struggle but except for Patsy Stephens who carried her to 3 games, she never gave up more than nine points in 2 games to any of her other opponents. They were truly championship performances for the field was the tops of the nation.

Both singles runners-up were seeded in third positions and each provided upsets over the No. 2 seeds, in the semi's. Carl Loveday's 3 game loss to Mendez was the more startling of the two for, except for Freeman, he has been unbeatable in the National Championships since 1941.



Left to right—1. Wynn Rogers, Mrs. Virginia Hill, President Wheary, Patsy Stephens, Clint Stephens; 2. Permanent trophies and the individual prizes for the finalists; 3. Dr. W. R. White, Mrs. Zoe Yeager, ABA Director Harry Vaughan, Patsy Stephens, Mrs. Thelma Scovil, Janet Wright; 4. Ladies' Doubles semi-finalists, Patsy Stephens, Shirley Blanchet, Elizabeth Anselm, Zoe Yeager, Dot Hann, Mari-anna Gott, Thelma Scovil, Janet Wright; 5. Baylor Queen of the Badminton Tournament; 6. Tournament Chairman Lloyd Russell, the comedy team of Ken Davidson and Don Vaughan.

The only other team to retain its title was that outstanding Ladies' Doubles team of Janet Wright and Mrs. Thelma Scovil. Their team experience and power were decisive factors, particularly in the last two rounds, where any letup would have resulted in real trouble from two fighting pairs, Gott-Hann and Yeager-Stephens.

Dave Freeman retained his Men's Doubles title but with a new partner in the tall, powerful and fast Wynn Rogers. This made Dave's fifth doubles title but brought Wynn his first in this event. With the 1947 runners-up, Clint Stephens-Bobby Williams, they provided the most spectacular of the finals and the scores of the last two games do not indicate the terrific battle this foursome provided. Service, as usual, was at a premium but perhaps from the spectators' angle, the almost uncanny ability of the four to return what appeared to be unbeatable smashes and close net shots was by far the most breathtaking.

Losing their 1947 crowns were the Mixed pair of Wynn Rogers-Mrs. Virginia Hill and the Veterans Hulet Smith-Lewis Rulison but both reached the finals in their events and made their opponents struggle to the last point.

The crowd-appeal champion mixed team of Mr. and Mrs. Clint Stephens was right on top with Patsy amazing spectators and players alike with her ability to handle the decisive stroking of Wynn Rogers and the most difficult serves of Mrs. Virginia Hill. The tops in mixed doubles stroking and strategy was displayed by both of the men.

The Veterans' champs Fred Fullin—"Pop" Hinds met their hardest match in the semi's and were expected to walk through the finals but the 1947 champs never quit trying and forced many rallies before they were ousted.

West and East coast players dominated the semi's and finals with the final results showing 3 wins for each but only 2 runner-up positions for the East and 4 for the West. The best of the Middlewest were Ted Moehlmann, Eleanor Coombs, Aderholt-Perkins, and Coombs-Burdick who reached the quarters, while the Southwest had quarter-finalists in Harman, Tenney, Margaret Varner and Harman-Jeanette Summers. The Northwest's star, Russ Hill drew a tartar in Loveday and went out in the 2nd round.

A few newcomers came into prominence as future real contenders but the "old guard" of well-known names will still be hard to beat if they continue with the brand of badminton displayed. The social side was noticeably in evidence with a well attended April 1st breakfast and parties and dances every night. It was not an occasion for sleep and rest but then who wants to sleep on such an exciting occasion.

National Championships Results

MEN'S SINGLES

PRELIMINARY ROUND: H. R. Harrison, Texas, def. James Carlton, Ga., 15/8, 15/13; Gil White, Calif., def. Ed Jarrett, N. Y., 12/15, 15/9, 15/2; Ken Kost, Conn., def. Bob Daubert, Texas, 15/3, 15/5; Bobby Fiers, Okla., def. George Wolff, Texas—Forfeit.

FIRST ROUND: Dr. Dave Freeman, Calif., def. Harrison, 15/3, 15/0; Jasper Garland, Texas, def. Lloyd Wales, Colo., 15/3, 15/9; Harry Hackett, Pa., def. Gilbert Buford, Calif., 15/10, 15/5; Ted Moehlmann, Mo., def. Philip Janz, Colo.—Forfeit; Robert Williams, N. Y., def. White, 15/6, 15/3; John McCormick, Calif., def. Bill Menefee, Texas, 15/5, 17/14; Irl Madden, Calif., def. Nick Roberts, Texas, 15/5, 15/3; Wynn Rogers, Calif., def. Dr. John Ambler, Colo., 15/3, 15/3; Martin Mendez, Calif., def. Walter Wondor, Texas—Forfeit; Kost def. Armin Barteldes, Colo., 15/2, 15/1; Norm Blanchet, Calif., def. Fred Fullin, Conn., 15/2, 11/15,

LADIES' DOUBLES

15/1; George Harman, Okla., def. Fred Halloran, Colo., 15/1, 15/2; Eugene Tenney, Texas, def. Donald Kerr, La., 15/2, 15/4; Arthur Fiebig, Mo., def. Cal Newton, Texas, 15/0, 15/5; Russ Hill, Ore., def. Wilbur McKinney, Texas, 15/6, 15/9; Carl Loveday, N. J., def. Fiers, 15/8, 15/9.

SECOND ROUND: Freeman def. Garland, 15/4, 15/3; Moehlmann def. Hackett, 15/5, 15/7; Williams def. McCormick, 15/4, 15/2; Rogers def. Madden, 15/5, 15/4; Mendez def. Kost, 15/0, 15/6; Harman def. Blanchet, 3/15, 15/9, 17/16; Tenney def. Fiebig, 18/13, 15/7; Loveday def. Hill, 15/12, 15/1.

QUARTER-FINALS: Freeman def. Moehlmann, 15/4, 15/5; Williams def. Rogers, 15/3, 5/15, 15/10; Mendez def. Harman, 15/9, 15/5; Loveday def. Tenney, 15/5, 15/2.

SEMI-FINALS: Freeman def. Williams, 15/7, 15/1; Mendez def. Loveday, 9/15, 15/3, 15/7.

FINALS: Freeman def. Mendez, 15/4, 15/5.

LADIES' SINGLES

PRELIMINARY ROUND: Virginia Hicks, Texas, def. Nancy Vaughn, Ga., 11/4, 11/1; Peggy Fuller, Okla., def. Eddie Jo Connell, Texas, 4/12, 11/4, 11/4; Charlotte Decker, D. C., def. Marie Clabaugh, Okla., 11/3, 11/6; Bernice Marignan, Calif., def. Marguerite Davis, Colo., 11/0, 11/1; Beatrice Massman, N. Y., def. Mary Tindle, Texas, 11/0, 11/0; Jeanette Summers, Okla., def. Margaret Ballenger, Texas, 11/2, 11/4; H. L. Harrison, Texas, def. Hazel McCall, Texas, 12/10, 11/8; Peggy Dyche, Okla., def. Ginger Greer, Texas, 11/0, 11/3.

FIRST ROUND: Ethel Marshall, N. Y., def. Vivian Dugger, Texas, 11/0, 11/0; Constance Horner, Calif., def. Hicks, 11/8, 11/9; Elizabeth Anselm, Calif., def. Fuller, 6/11, 11/5, 11/3; Helen Tibbetts, Calif., def. Mary Barton, Texas, 11/0, 11/1; Shirley Blanchet, Calif., def. Decker, 12/10, 11/1; Margaret Varner, Texas, def. Dorothy Hann, Calif., 6/11, 11/7, 11/2; Marignan def. Virginia Smith, Mo., 3/11, 11/5, 11/1; Patsy Stephens, Md., def. Ruth Jett, Calif., 12/10, 11/4; Thelma Scovil, Calif., def. Gloria Quinn, Texas, 11/0, 11/1; Abbie Rutledge, Texas, def. Beth Bowers, Texas, 11/0, 11/0; Massman def. Kay Mitchell, Texas, 11/4, 11/4; Eleanor Coombs, Ill., def. Summers, 11/3, 11/5; Marianna Gott, Calif., def. Harrison, 11/0, 11/3; Thelma Burdick, Ill., def. Peggy Vilbig, Texas, 11/9, 11/4; Dorothy Lander, Texas, def. Dyche, 11/3, 5/11, 13/9; Janet Wright, Calif., def. Betty Worthmeir, 11/1, 11/1.

SECOND ROUND: Marshall def. Horner, 11/2, 11/7; Tibbetts def. Anselm, 11/2, 11/4; Varner def. Blanchet, 11/4, 11/9; Stephens def. Marignan, 11/7, 11/0; Scovil def. Rutledge, 10/0, 11/7; Coombs def. Massman, 11/2, 11/8; Gott def. Burdick, 11/5, 11/3; Wright def. Lander, 11/0, 11/2.

QUARTER-FINALS: Marshall def. Tibbetts, 11/5, 11/4; Stephens def. Varner, 11/7, 12/9; Scovil def. Coombs, 11/7, 11/1; Wright def. Gott, 11/3, 11/2.

SEMI-FINALS: Marshall def. Stephens, 2/11, 11/5, 11/7; Scovil def. Wright, 11/9, 11/7.

FINALS: Marshall def. Scovil, 11/4, 11/5.

MEN'S DOUBLES

FIRST ROUND: Freeman-Rogers, Calif., def. Wheary-Beach, Ill., 15/1, 15/4; Jarrett, N. Y.-Smart, Calif., def. Harrison-Lawler, Texas, 15/6, 12/15, 15/10; Fiebig-Moehlmann, Mo., def. Busby-Cole, Calif., by default; Fullin, Conn.-Hinds, N. Y., def. Clabaugh-Fiers, Okla., 15/6, 15/1; Elms-Mendez, Calif., def. Kerr, La.-Russell, Texas, 15/5, 15/8; Harman, Okla.-Hill, Ore., def. Rulison-Smith, Calif., 15/9, 18/17; Aston-Newton, Texas, def. Barteldes-Wales, Colo., 15/2, 15/5; Blanchet-Madden, Calif., def. Mills-Wurasch, Texas, 15/4, 15/8; Loveday, N. J.-Yeager, N. Y., def. Englert-Windsor, Texas, by default; Buford-White, Calif., def. Ambler-Halloran, Colo., 15/6; 15/3; Tenney-Faver, Texas, def. Daubert, Texas-Jordan, Mo., 15/6, 15/2; Hackett, Pa.-Shields, N. Y., def. Cole-Overholser, Okla., 15/3, 15/3; Aderholt-Perkins, Mo., def. Mapes, Okla.-Wolff, Texas, 15/0, 15/1; Garland-Menefee, Texas def. Richardson, Mass.-Kost, Conn., 18/15, 15/7; Roberts-Horn, Texas, def. McCook-Taylor, Calif., 18/16, 15/3.

SECOND ROUND: Freeman-Rogers def. Jarrett-Smart, 15/8, 15/1; Fullin-Hinds def. Fiebig-Moehlmann, 15/6, 15/12; Elms-Mendez def. Harman-Hill, 15/6, 15/10; Blanchet-Madden def. Aston-Newton, 15/18, 15/8; Loveday-Yeager def. Buford-White, 15/3, 15/3; Hackett-Shields def. Tenney-Faver, 15/10, 11/15, 15/10; Aderholt-Perkins def. Garland-Menefee, 15/6, 15/11; Stephens, Md.-Williams, N. Y., def. Roberts-Horn, 15/8, 15/7.

QUARTER-FINALS: Freeman-Rogers def. Fullin-Hinds, 15/6, 15/4; Blanchet-Madden def. Elms-Mendez, 15/5, 15/8; Loveday-Yeager def. Hackett-Shields, 15/12, 15/6; Stephens-Williams def. Aderholt-Perkins, 15/8, 15/6.

SEMI-FINALS: Freeman-Rogers def. Blanchet-Madden, 15/11, 15/2; Stephens-Williams def. Loveday-Yeager, 15/11, 9/15, 15/6.

FINALS: Freeman-Rogers def. Stephens-Williams, 17/16, 8/15, 15/8.

FIRST ROUND: Muldoon-Randal, Texas, def. Cole-Fiers, Texas, 15/5, 15/3; Rutledge-Varner, Texas, def. Connell-Greer, Texas, 15/4, 15/3; Smith-Tibbetts, Calif., def. Bowers-Quinn, Texas, 15/5, 15/6; Gott-Hann, Calif., def. Vaughn-Tindle, Texas, 15/1, 15/4; Marshall-Massman, N. Y., def. Graham-Nebenzahl, Texas, 15/2, 15/0; Jude-Marignan, Calif., def. Decker, Wash., D. C.-Hellwig, N. Y., 18/14, 9/15, 15/11; Gibson-Bergman, Conn., def. Kleban-Larson, Texas, 15/3, 15/6; Stephens, Md.-Yeager, N. Y., def. Hicks-Worthmeir, Texas, 15/1, 15/1; Davidson-Jett, Calif., def. Clapham-Horton, Texas—Forfeit; Berry-Overholser, Okla., def. Ballinger-Barton, Texas, 15/6, 15/1; Burdick-Coombs, Ill., def. McCall-Dugger, Texas, 15/0, 15/1; Horner-Summers, Calif., def. Davis-Gregory, Colo., 15/1, 15/3; Mitchell-Lander, Texas, def. Dyche-Fuller, Okla., 15/7, 15/6; Vilbig-Mills, Texas, def. Clabaugh-Ramsey, Okla., 15/6, 17/15, 15/2.

SECOND ROUND: Scovil-Wright def. Muldoon-Randal, 15/1, 15/2; Smith-Tibbetts def. Rutledge-Varner, 7/15, 15/1, 15/1; Gott-Hann def. Marshall-Massman, 14/17, 15/1, 15/7; Gibson-Bergman def. Jude-Marignan, 15/12, 15/12; Stephens-Yeager def. Davidson-Jett, 15/11, 15/3; Burdick-Coombs def. Berry-Overholser, 15/3, 15/3; Horner-Summers def. Mitchell-Lander, 15/3, 15/8; Anselm-Blanchet, Calif., def. Vilbig-Mills, 15/1, 15/1.

QUARTER-FINALS: Scovil-Wright def. Smith-Tibbetts, 15/8, 15/6; Gott-Hann def. Gibson-Bergman, 15/4, 11/15, 15/11; Stephens-Yeager def. Burdick-Coombs, 15/10, 13/9; Anselm-Blanchet def. Horner-Summers, 15/4, 15/4.

SEMI-FINALS: Scovil-Wright def. Gott-Hann, 18/13, 15/10; Stephens-Yeager def. Anselm-Blanchet, 16/17, 15/11, 15/10.

FINALS: Scovil-Wright def. Stephens-Yeager, 15/9, 15/6.

MIXED DOUBLES

PRELIMINARY ROUND: White-Elms, Calif., def. Clabaugh-Clabaugh, Okla., 15/3, 15/6; Buford-Marignan, Calif., def. McKinney-Lander, Texas, 15/2, 15/7; Moehlmann-Coombs def. Shields-Hellwig, N. Y., 18/14, 15/6; Kost, Conn.-Gott, Calif., def. Kerr-Muldoon, Texas, 15/10, 15/2; McCormick-Jett, Calif., def. Fiers-Ramsey, Okla., 15/4, 15/10; Elms-Davidson, Calif., def. Cole-Cole, Calif., 15/2, 15/5; Overholser-Berry, Okla., def. Daubert-Randal, Texas, 15/3, 15/1; Faver, Texas-Anselm, Calif., def. Perkins-Perkins, Mo., 15/6, 6/15, 17/16; Taylor-Horner, Calif., def. Wolff-Greer, Texas, 15/1, 15/2.

FIRST ROUND: Rogers-Hill, Calif., def. Mills-Mills, Texas, 15/1, 15/0; White-Elms def. Barteldes-Gregory, Colo., 15/2, 15/2; Menefee-Mitchell, Texas, def. Richardson-Richardson, Mass., 15/8, 16/18, 15/8; Harman-Summers, Okla., def. Buford-Marignan, 15/7, 15/2; Blanchet-Blanchet, Calif., def. Moehlmann-Coombs, 15/6, 15/8; Hill-Hann, Calif., def. Roberts-Lander, Texas, 15/11, 15/4; Tenney, Texas-Burdick, Mo., def. Harrison-Harrison, Texas, 15/2, 15/7; Yeager-Yeager, N. Y., def. Kost-Gott, 4/15, 15/9, 15/9; Freeman-Tibbetts, Calif., def. Horn-Varner, Texas, 15/5, 15/6; Rutledge-Garland, Texas, def. Halloran-Davis, Colo., 15/2, 15/1; Hackett, Pa.-Scovil, Calif., def. McCormick-Jett, Calif., 15/6, 18/14; Loveday, N. Y.-Gibson, Conn., def. Elms-Davidson, 15/5, 15/10; Madden, N. Y.-Jude, Calif., def. Fullin, Conn.-Decker, Wash., D. C., 15/12; Faver-Anselm def. Overholser-Berry, 8/14, 15/5; Mendez-Smith, Calif., def. Newton-Larson, Texas, 15/4, 15/8; Stephens-Stephens, Md., def. Taylor-Horner, 15/13, 15/2.

SECOND ROUND: Rogers-Hill def. White-Elms, 15/5, 9/15, 15/11; Harman-Summers def. Menefee-Mitchell, 17/14, 17/14; Blanchet-Blanchet def. Hill-Hann, 15/11, 15/2; Yeager-Yeager def. Tenney-Burdick, 15/9, 15/10; Freeman-Tibbetts def. Rutledge-Garland, 15/3, 15/1; Loveday-Gibson def. Hackett-Scovil, 15/9, 15/12; Madden-Jude def. Faver-Anselm, 15/1, 15/6; Stephens-Stephens def. Mendez-Smith, 15/12, 9/15, 18/13.

QUARTER-FINALS: Rogers-Hill def. Harman-Summers, 15/4, 15/3; Blanchet-Blanchet def. Yeager-Yeager, 15/6, 15/2; Freeman-Tibbetts def. Loveday-Gibson, 15/11, 15/18, 15/9; Stephens-Stephens def. Madden-Jude, 6/15, 15/6, 15/4.

SEMI-FINALS: Rogers-Hill def. Blanchet-Blanchet, 12/15, 15/11, 15/12; Stephens-Stephens def. Freeman-Tibbetts, 18/13, 15/12.

FINALS: Stephens-Stephens def. Rogers-Hill, 17/14, 18/13.

VETERANS' DOUBLES

FIRST ROUND: Jarrett, N. Y.-Smart, Calif., def. Aston-Lawler, Texas, 15/5, 15/9; Mills-Wukasch, Texas def. Smith-Rudmose, Texas—Forfeit; McCook-Taylor, Calif., def. Ambler-Wales, Colo., 15/2, 15/4.

QUARTER-FINALS: Smith-Rulison, Calif., def. Harold-Vaughn, Ga., 15/1, 15/3; Jarrett-Smart def. Beach-Wheary, Ill., 15/3, 9/15, 15/8; Fullin, Conn.-Hinds, N. Y., def. Mills-Wukasch, 15/0, 15/1; Elms-Mullins, Calif., def. McCook-Taylor, 15/6, 15/6.

SEMI-FINALS: Smith-Rulison def. Jarrett-Smart, 15/5, 11/15, 15/11; Fullin-Hinds def. Elms-Mullins, 5/15, 15/8, 15/12.

FINALS: Fullin-Hinds def. Smith-Rulison, 15/11, 15/13.

U. S. Championship Honor Roll

Sites of National Tournaments

1937—Chicago, Ill.
1938—Philadelphia, Pa.
1947—Los Angeles, Cal.

1939—New York, N. Y.
1940—Seattle, Wash.
1943-44-45-46—No National Championship held
1948 Waco, Texas

1941—Cleveland, Ohio
1942—Durham, North Carolina

CHAMPIONS

RUNNERS-UP

CHAMPIONS

RUNNERS-UP

MEN'S SINGLES

1937 Walter R. Kramer
1938 Walter R. Kramer
1939 David G. Freeman
1940 David G. Freeman
1941 David G. Freeman
1942 David G. Freeman
1943-1946 No championship held
1947 David G. Freeman
1948 David G. Freeman

Hock Sim Ong
William Markham
Walter R. Kramer
Walter R. Kramer
Carl Loveday
Carl Loveday
Carl Loveday
Martin Mendez

MEN'S DOUBLES

1937 Chester Goss
Donald Eversoll
1938 Hamilton Law
Richard Yeager
1939 Hamilton Law
Richard Yeager
1940 Chester Goss
David G. Freeman
1941 Chester Goss
David G. Freeman
1942 Chester Goss
David G. Freeman
1943-1946 No championship held
1947 David G. Freeman
Webster Kimball
1948 David G. Freeman
Wynn Rogers

Donald Richardson
Philip Richardson
Chester Goss
Donald Eversoll
David G. Freeman
C. Raymor Hutchinson
Hamilton Law
Richard Yeager
LeRoy Erikson
Raeford Haney
William Faversham
Wayne Schell
Clinton Stephens
Robert Williams
Clinton Stephens
Robert Williams

VETERANS' DOUBLES

1938 Herbert Henriques
George McCook
1939 C. Raynor Hutchinson
Lealand Gustavson
1940 Tim Royce
George McCook
1941 Lealand Gustavson
C. Raynor Hutchinson
1942 Lealand Gustavson
Frank N. Hinds
1943-1946 No championship held
1947 Lewis Rulison
Hulet Smith
1948 Fred Fullin
Frank N. Hinds

Frank N. Hinds
Rees Cramer
George McCook
Herbert Henriques
Ross Williams
Roland France
Frank N. Hinds
Samuel J. Massey
Donald Richardson
Philip Richardson
Chips Aurand
Ray Wilhelm
Lewis Rulison
Hulet Smith

LADIES' SINGLES

1937 Mrs. Del Barkhuff
1938 Mrs. Del Barkhuff
1939 Mary E. Whittemore
1940 Evelyn Boldrick
1941 Thelma Kingsbury
1942 Evelyn Boldrick
1943-1946 No championship held
1947 Ethel Marshall
1948 Ethel Marshall

Mrs. Roy C. Bergman
Mary E. Whittemore
Helen Gibson
Zoe G. Smith
Evelyn Boldrick
Janet Wright
Janet Wright
Mrs. Thelma Scovil

LADIES' DOUBLES

1937 Mrs. Del Barkhuff
Zoe G. Smith
1938 Mrs. Roy C. Bergman
Helen Gibson
1939 Mrs. Del Barkhuff
Zoe G. Smith
1940 Elizabeth Anselm
Helen Zabriskie
1941 Thelma Kingsbury
Janet Wright
1942 Evelyn Boldrick
Janet Wright
1943-1946 No championship held
1947 Thelma K. Scovil
Janet Wright
1948 Mrs. Thelma Scovil
Janet Wright

Mrs. Roy C. Bergman
Helen Gibson
Mrs. Del Barkhuff
Zoe G. Smith
Mrs. Roy C. Bergman
Helen Gibson
Janet Wright
Shirley Steuben
Mary E. Whittemore
Patricia Donovan
Mrs. Roy C. Bergman
Helen Gibson
Elizabeth Anselm
Shirley Blanchett
Mrs. Patricia Stephens
Mrs. Zoe Yeager

MIXED DOUBLES

1937 Hamilton Law
Mrs. Del Barkhuff
1938 Hamilton Law
Mrs. Del Barkhuff
1939 Richard Yeager
Zoe G. Smith
1940 David G. Freeman
Sally L. Williams
1941 David G. Freeman
Sally L. Williams
1942 David G. Freeman
Sally L. Williams
1943-1946 No championship held
1947 Wynn Rogers
Mrs. Virginia Hill
1948 Mr. and Mrs. Clinton Stephens

Walter R. Kramer
Mrs. Ray Casey
Chester Goss
Mrs. George Wightman
David G. Freeman
Mary E. Whittemore
Walter R. Kramer
Mrs. Roy C. Bergman
LeRoy Erikson
Janet Wright
Carl Loveday
Mary Hagen
Mr. and Mrs. Clinton Stephens
Wynn Rogers
Mrs. Virginia Hill

U. S. Junior Championship

Sites of National Tournaments

1947—Baltimore, Md.

1948—New Britain, Conn.

BOYS' SINGLES

1947 Ted Moehlmann
1948 Ronnie Ryan

Wilbur Bullen, Jr.
Wilbur Bullen, Jr.

GIRLS' SINGLES

1947 Barbara Scarlett
1948 Barbara Scarlett

Jean Harvey
Marilyn Banks

BOYS' DOUBLES

1947 Don Brown
Ted Moehlmann
1948 William Kellogg
Wilbur Bullen, Jr.

Allen Hardin
Scrappy O'Sullivan
Jack Taylor
Don Brown

GIRLS' DOUBLES

1947 Susan Devlin
Barbara Scarlett
1948 Barbara Scarlett
Susan Devlin

Helen Pipes
Jean Mallory
Marilyn Banks
Judy Devlin

MIXED DOUBLES

1947 Ted Moehlmann
Pat Galbreath
1948 Ronnie Ryan
Marilyn Banks

Wilbur Bullen, Jr.
Helen Pipes
Wilbur Bullen, Jr.
Barbara Scarlett

Peggy Varner and Jasper Garland Score Heavy at Southwestern Annual Intercollegiate Badminton Tournament

The Seventh Annual Southwestern Intercollegiate Badminton Tournament was played at Perkins Gymnasium, Southern Methodist University, April 30-May 1. For the first time a Novice Class was included.

There were 97 individual entrees from 7 colleges with 160 matches played in the two classes. The trophy, won by Baylor University, was awarded on a point system adopted by a committee of twelve, composed of the Sponsors and Presidents of the Badminton Clubs of the schools participating in the tournament. The point system is as follows:

The largest draw, 64, was used as a guide: 5 points were given for the winner, 4 for finals, 3 for semi-finals, 2 for quarter-finals, 1 for the other rounds, plus one for entering. Thus there were 17 points that the winner might make for the college.

Each division was considered as important as the other, therefore all winners were able to add 17 points to their team total. The points were distributed as equally as possible. In a 32 draw the winner earned 6 points, finals 4, semi-finals 3, etc. This method seemed more feasible as it made it possible for both novice and champion to contribute equally toward the team trophy. As our own objective was to encourage new and untried players, this was approved by the committee. One entire extra point was given whenever possible to the winner to avoid the usual criticism that the team with the greatest number of entries won the trophy regardless of ability.

Also discussed was the addition of Class B next year, requiring all novices who won a match to move to Class B, and another year all who reached the semi- or quarter-finals in Class B to move on to Championship class. Classification was difficult and suggestions for clear cut divisions of Novice, Class B and Championship are needed in the Intercollegiate Tournaments.

RESULTS Championship Class

Men's Singles

Jasper Garland (B.U.) def. Roy Merritt (A.C.C.), 15/8, 15/2.

Ladies' Singles

Margaret Varner (T.S.C.W.) def. Dorothy Lander (S.M.U.), 11/2, 11/4.

Men's Doubles

Jasper Garland (B.U.)-W. B. Smith (A.C.C.) def. Roy Merritt (A.C.C.)-A. J. Deans (A.C.C.) 7/15, 15/2, 15/7.

Ladies' Doubles

Margaret Varner (T.S.C.W.)-Dorothy Lander (S.M.U.) def. Peggy Vilbig (T.U.)-Peggy Hicks (T.S.C.W.) 15/7, 15/3.

Mixed Doubles

Ken Crawford (S.M.U.)-Dorothy Lander (S.M.U.) def. Jasper Garland (B.U.)-Margaret Varner (T.S.C.W.), 17/14, 15/7.

Novice Class

Men's Singles

Dee Nutt (A.C.C.) def. Davey Borders (B.U.), 9/15, 15/10, 15/9.

Ladies' Singles

Gloria Quinn (B.U.) def. Mary Barton (B.U.), 11/8, 11/5.

Men's Doubles

David Wickers (B.U.)-Davey Borders (B.U.) def. George Wolf (B.U.)-Gene Cullen (B.U.), 15/8, 15/12.

Ladies' Doubles

Martha Hasty (S.M.U.)-Frances Black (S.M.U.) def. Mary Barton (B.U.)-Beth Bowers (B.U.), 15/8, 17/14.

Mixed Doubles

George Wolfe (B.U.)-Gloria Quinn (B.U.) def. Davey Borders (B.U.)-Mary Elizabeth Tindle (B.U.), 15/0, 15/12.

Team Standings

	Points Won	No. of Entries
Baylor University	234½	21
Texas State College for Women	160	30
Abilene Christian College	137	17
Southern Methodist University	133	21
Stephen S. Austin Club	16	5
Texas University	14	1
Trinity University	5½	1

Correspondent — Mary Elizabeth McCoy (S.M.U.)

Editor's Note: Bird Chatter and the ABA have been watching closely the operation of intercollegiate badminton activities. The source of our coming national top flight players is obviously from the youth of the nation. With the Second National Junior Championships and now the Seventh Southwestern Intercollegiate Tournament being patronized by so many, there is ample assurance of a real interest in the game and an optimism that we will have excellent players on the way up. It is of interest to note that the outstanding lady player in the above Intercollegiate event was Margaret Varner. By virtue of her outstanding play in the National Championships she has won herself a place in the top ten lady players of the Nation and there were many who saw her play who predict an excellent future. The program for this Southwestern Tournament included in it a section devoted to certain playing rules with particular reference to service and faults. It is pleasing to Bird Chatter to see these points stressed, for the understanding of the rules by the younger players will avoid many misunderstandings as they continue in competition. Nice going, Miss McCoy and your cohorts.

Moehlmann Wins Missouri Championship

New champions were crowned in Men's and Ladies' Singles, Doubles and Veterans' Divisions at the 12th Annual Missouri Badminton Championships held at Christian Brothers College Gymnasium, St. Louis, Missouri, March 13th and 14th.

Teddy Moehlmann, Jr., 1947 National Junior Champion upset Richard J. Casey, former Midwest Singles Champion, in the semi-finals and then routed Art Fiebig to win the Championship. Fiebig upset W. Russell Smith, defending champion, in an earlier round.

Third seeded Mrs. Virginia Smith eliminated defending champion, Mrs. Marie Riel and second-seeded

Miss Mildred Norwine to become the 1948 title holder. Mrs. Smith also teamed with Mrs. Riel in Ladies' Doubles and with her husband Russell in Mixed Doubles to become a triple winner.

Ken Aderholt and Herpel Perkins added the Missouri State Men's Doubles crown to their growing list of titles by defeating Teddy Moehlmann, Jr., and Art Fiebig in the finals. Aderholt and Perkins also hold the Texas, Oklahoma and Indiana titles.

James Tancill and Bob Warner teamed up to snare the Veterans' crown from defending champions Vernon Reger and Bob Stuessel.

RESULTS

Men's Singles

Ted Moehlmann, Jr. def. Art Fiebig, 15/9, 15/5.

Ladies' Singles

Mrs. Virginia Smith def. Mrs. Marie Riel, 11/1, 11/2.

Men's Doubles

Ken Aderholt-Herpel Perkins def. Ted Moehlmann, Jr.-Art Fiebig, 15/3, 16/17, 15/1.

Ladies' Doubles

Mrs. Virginia Smith-Mrs. Marie Riel def. Mildred Norwine-Mrs. Anita Gaul, 8/15, 15/12, 15/10.

Mixed Doubles

Mr. and Mrs. Russell Smith def. Mr. and Mrs. Herpel Perkins, 15/5, 15/12.

Veterans' Doubles

James Tancill-Robert Warner def. Robert Stuessel-Vernon Reger, 18/16, 15/11.

Correspondent — Mrs. Peg Goessling

Kerr Reaches Finals N. J. Closed Championships

The Montclair Athletic Club was for the second time since the war the scene of the New Jersey State Closed Badminton Championships. Play was held Saturday and Sunday, April 10 and 11. Fifty-eight players from various parts of the Garden State competed.

Outstanding in the play was the amazing Donald Kerr of Montclair, A. C. amputee and erstwhile New Orleans Champion. Kerr battled his way to the finals to be defeated by young "Sandy" Hammell of Cranford, New Jersey, the scores of which were not indicative of the closeness of the match. It was a case of youth winning out over guile and craft.

Miss Sophie Dickson of Plainfield who reigned as Ladies' Singles Champion in the period prior to the war came a cropper in her first singles match. Miss Harriette Stokes of Maplewood unleashed a hard smashing game to defeat Miss Dickson and to carry her to the semi-finals before being eliminated.

Robert Waterhouse of Plainfield playing under the colors of the Short Hills Racquet Club was another former champion to fall by the wayside. In the early forties, Waterhouse's star shone brightly until Carl Loveday came out of the West to become King of the East and dim his luster. In the Championships of 1942, the finals of Men's Singles, Men's Doubles and Mixed Doubles found Waterhouse and Loveday battling it out with obvious results. Come 1948 however, and Waterhouse playing with Sandy Hammell, the Single's champ, was defeated in Men's Doubles by the top seeded team of Reiners and Swinarton. In Mixed Doubles Mrs. Martha Callanan and Cheever Lockwood, also top seeded, proved too great a hurdle for Waterhouse and his partner, Miss Lisivick.

Mrs. Lilla Haura was crowned the Ladies' Singles Champ, defeating Miss Harriette Stokes in the finals in a decisive match. Mrs. Haura was a double winner, taking the Ladies' Doubles title with Martha Callanan as her partner and with her husband reaching the finals in the mixed, tasting defeat in a two-game match by the rackets of the Callanan-Lockwood duo.

The Men's Doubles title was taken by Lockwood and Bart after rough going all the way. In the

semi-finals "Honest" Cy Sasseen and Ralph Starrett gave them a tough fight up to the final point of a three-game match. An evenly contested three-game match in the finals against Reiners and Swinarton gave them the title.

Harold and Eda Daume played to tough luck on the road to victory in mixed doubles. After putting out the second seeded team of Mr. and Mrs. Herbert L. Swinarton and leading the Hauras one game to none in the semi-finals, Harold pulled a tendon and had to withdraw.

On Saturday night after the quarter-finals, Mr. Joe Goward, major domo of the Montclair Athletic Club, was host to the contestants and their friends. This was the high point of the tournament for some, especially "Honest" Sasseen who found that dancing with the youth was just about as wearying as competing against them on the badminton court.

The Tournament Committee consisted of: Mr. and Mrs. H. L. Swinarton, Mr. and Mrs. Cy Sasseen, Mr. and Mrs. Joe Haura, Mr. and Mrs. John Buyers, Mr. and Mrs. Carl Loveday, Mr. and Mrs. Harold Daume, Mr. and Mrs. Cheever Lockwood, Jr., Mr. Donald Kerr, Mr. Jack Bateman, Mr. Ralph Starrett, Mr. and Mrs. John Callanan.

The results and the scores of the finals are as follows:

Men's Singles

Alexander Hammell def. Donald Kerr, 15/7, 15/11.

Ladies' Singles

Mrs. Lilla Haura def. Miss Harriette Stokes, 13/12, 11/2.

Men's Doubles

Cheever Lockwood, Jr.-Sig Bart def. Herbert L. Swinarton-William T. Reiners, 11/15, 15/9, 15/9.

Ladies' Doubles

Mrs. Lilla Haura-Mrs. Martha Callanan def. Miss Sophie Dickson-Mrs. Bobbie Teeter, 15/6, 18/14.

Mixed Doubles

Cheever Lockwood, Jr.-Mrs. Martha Callanan def. Mr. and Mrs. Joe Haura, 15/12, 15/8.

Correspondent — H. L. Swinarton

Serving Rule Investigated ABA Rule Book Correct

During the days of the Waco National Championships a question was raised concerning the wording of Rule 16 of the Laws of Badminton, as to whether the official International Rules were the same as those printed in our ABA Rule Book.

This rule refers to the position of the feet of the server and the receiver when play starts. Our Rule Book states that "some part of both feet of these players must remain in contact with the ground in a stationary position until the service is delivered."

The point raised was the doubt that the International rules did not specifically state "in a stationary position" and that if we should play in International competition our players might be penalized if others could slide when serving or otherwise move their feet while service was underway.

The Directors instructed the National Secretary to investigate this point. Subsequently the ABA Rules Committee was contacted and the Chairman states that our rules conform to the IBF regulations as printed in the latest (1947-48) edition. To those who were concerned about this ruling there need be no more wondering — our Official ABA Rule Book is correct.

It is interesting to recall that there was a time, perhaps 10 years ago, when the "stationary" feature was not part of the rules. As a consequence a number of top flight players were sliding one foot forward in serving and others were dragging the back foot well out of its original position.

When the rule was changed is not recalled, but perhaps the slide service was responsible for it. Suffice it to say, that both feet of server and receiver must now have stationary contact with the floor.

The interpretation of this does not prevent the lifting of the heel or toe (the former is quite prevalent during high singles service) but care must be exercised that the foot is not thereby dragged from its original position before the shuttle is struck.

Since the days of sliding and dragging, stopped by this rule, only one problem for an umpire has developed. This is the so called "step service," definitely as illegal as a slide service. Many players have developed one of two bad serving

(Continued on next page)

**Give a real boost to the new
Bird Chatter Staff. Mail
your \$1.00, \$2.00 or \$3.00
subscription promptly. Use
blank on page 5.**

The Birthplace of Badminton



BADMINTON,
(GENERAL VIEW)
GLOUCESTERSHIRE

Front view of Badminton House — Gloucestershire, England (See story next page)

Serving Rule

(Continued from previous page)

habits revolving around this. They either enter their court, wheel into position from either the side or rear and *immediately* serve. Or they enter their court take one step to put them into the spot from which they wish to serve and *immediately* serve. In both cases their feet may, and usually do, come to a direct stop before delivering the serve. However, in many cases their arm or body has already commenced its motion, even though no contact with the shuttle has been made.

Rule 16 states that both players *must stand* within the limits of their courts. There can be no other interpretation of this but that the server must take his position *first* and time should be allowed the receiver to

then assume his position. Rule 15 substantiates this interpretation by stating that "the server may not serve until his opponent is ready."

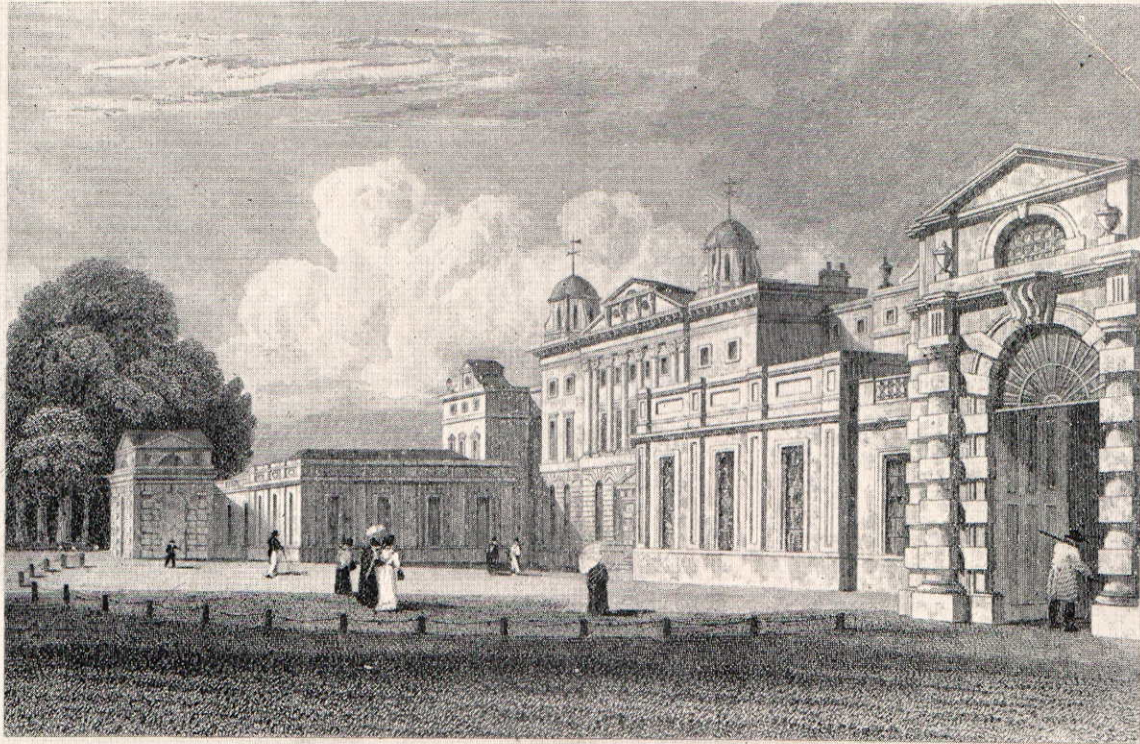
With Rule 15 as the controlling factor it must then mean that only *when* the server has actually taken a stationary position, and given his opponent an opportunity to also assume his, can the service properly be delivered. Any subsequent movement by the server is the act of serving and must therefore entirely conform to the rules of *standing* in position and maintaining the feet in a *stationary* position.

These safeguards are for the benefit of the receiver but there are likewise safeguards for the server. The ruling that the feet of the receiver must be in a stationary position is to prevent any movement from side to side or front to rear of the court in illegal anticipation of serving to

the place to which the receiver expects the service. "Rushers" are often apt to move their feet a fraction before the shuttle is hit, either to meet it as soon as possible after it clears the net or to back-track to reach a flick or high service as quickly as possible. With the serve considerably of a defensive stroke, by virtue of its necessary upward flight, any foot movement by the receiver prior to the actual striking of the shuttle is a breakdown of the server's safeguard and consequently illegal.

The above discussion may be somewhat technical to novices or inexperienced players. Those who enter competition of any calibre should consider carefully the above interpretation and conform to the intent of these rules indicated by the legal wording and the interpretations given herein.

Entrance to Badminton House



Drawn by J.P. Neale

Engraved by W. Radclyffe

BADMINTON, GLOUCESTERSHIRE

The Original Seat of Badminton

The pictures reproduced above are from very old etchings submitted by C. L. "Red" Nicholls of Cleveland, Ohio. They are scenes of Badminton House, the country seat of the Duke of Beaufort, who is reported to be the right-hand man of the King of England.

It was in this house that British Army officers, who had just returned from India, were at a banquet given by the old Duke in the 1890's. The Duke became interested in their conversation about the game "Poona" and a demonstration was given—chicken feathers stuck in champagne corks, with bottles for bats and the table as a court produced a merry game from which emerged the game "Badminton."

"Red" was born only three and one-half miles from this site and can vouch that this is the country home of the Duke of Beaufort.

Spokane Briefs



Members of the Spokane Y.M.C.A. Club with Ken Davidson in the center of the front row, Lucille Lees and Jack Harvey.

SPOKANE CITY CHAMPIONSHIP

Men's Singles

Jack Harvey def. Frank Gay.

Ladies' Singles

Lucille Lee def. Doris Popple.

Men's Doubles

Harvey-Showacre def. Corrin-Gaylord.

Ladies' Doubles

Kay Ferger-Lucille Hegdahl def. Leila

Mahoney-Gladys Weimar.

Mixed Doubles

Showacre-Lee def. Harvey-Hegdahl.

During Ken Davidson's four-day tour of the Northwest he exhibited at the Spokane Y.M.C.A. and Armory before some 6,650 club, high school and college spectators.

Official American Badminton Association 1948 Rankings

Following the procedure started last year the Official United States Rankings are broadcast in the final issue of Bird Chatter for this season.

To enable our readers to understand the policies behind the rankings, listed below we quote the report of the Ranking Committee issued by Chairman Roy Jordan of St. Louis.

"The general policy of ranking is based on the following points:

1. Results of contestants in National Championships.
2. Results of contestants in intersectional tournaments who also participate in the Nationals.
3. Results of contestants in regional or sectional championships who participate in the Nationals.
4. Results of contestants in intersectional, regional, or sectional tournaments who do not participate in the Nationals.

Elaboration and clarification of these points is as follows:

1. The National Rankings will be based primarily on the play at the National Tournament, but not more than the first four rankings will be automatically given based on this play, and the results of the National Tournament shall not necessarily establish the order of this ranking.
2. A player or team that has participated in at least

three major tournaments during the season, but not in the Nationals, may, nevertheless, be considered for ranking.

3. A player may be ranked more than once if he has a successful team record with more than one other player.

4. Rankings will be given only where sufficient data is available to substantiate the rankings. In this connection, it may be impossible to rank ten players or teams in each event.

5. Honorable mention will be given to teams or players on which there is insufficient data to rank, and will be done on a geographical basis rather than on comparative abilities.

6. Junior Rankings are vital but will be compiled using the results of the National Junior Tournament only."

In considering this report, the Directors at Waco added a general amendment that the committee should consider all factors and that the results of the Nationals should not be automatically controlling. Play throughout the year should be considered an important element.

Once again the Committee was hampered in any early report through lack of complete major tournament results. A special report sheet for local tournament chairmen is being considered for next season.

MEN'S SINGLES

- | | |
|-----------------------|---------------------------|
| 1. David Freeman | Pasadena, California |
| 2. Martin Mendez | San Diego, California |
| 3. Carl Loveday | Montclair, New Jersey |
| 4. Robert Williams | Niagara Falls, New York |
| 5. Wynn Rogers | Arcadia, California |
| 6. Clinton Stephens | Baltimore, Maryland |
| 7. Barney McCay | Alhambra, California |
| 8. Ted Moehlmann, Jr. | University City, Missouri |
| 9. George Harman | Ponca City, Oklahoma |
| 10. Norman Blanchet | Oakland, California |

LADIES' SINGLES

- | | |
|---------------------------|------------------------------|
| 1. Ethel Marshall | Buffalo, New York |
| 2. Mrs. Thelma Scovil | Long Beach, California |
| 3. Mrs. Patricia Stephens | Baltimore, Maryland |
| 4. Janet Wright | San Francisco, California |
| 5. Mrs. Helen Tibbetts | Los Angeles, California |
| 6. Margaret Varner | Denton, Texas |
| 7. Marianna Gott | West Los Angeles, California |
| 8. Eleanor Coombs | Chicago, Illinois |
| 9. Mrs. Shirley Blanchet | San Francisco, California |
| 10. Constance Horner | Hollywood, California |

MEN'S DOUBLES

- | | |
|---------------------|----------------------------|
| 1. David Freeman | Pasadena, California |
| Wynn Rogers | Pasadena, California |
| 2. Robert Williams | Buffalo, New York |
| Clinton Stephens | Baltimore, Maryland |
| 3. Carl Loveday | Montclair, New Jersey |
| Richard Yeager | New Rochelle, New York |
| 4. Norman Blanchet | Oakland, California |
| Irl Madden | San Francisco, California |
| 5. Leroy Erikson | Glendale, California |
| Barney McCay | Alhambra, California |
| 6. Wynn Rogers | Arcadia, California |
| Webb Kimball | Pasadena, California |
| 7. Ken Aderholt | Clayton, Missouri |
| Herpel Perkins, Jr. | St. Louis, Missouri |
| 8. Eugene Elms | Los Angeles, California |
| Martin Mendez | San Diego, California |
| 9. Edward Shields | Long Island City, New York |
| Harry Hackett | Philadelphia, Pennsylvania |
| 10. Eugene Tenney | Waco, Texas |
| Robert Faver | Waco, Texas |

LADIES' DOUBLES

- | | |
|---------------------------|------------------------------|
| 1. Mrs. Thelma Scovil | Long Beach, California |
| Janet Wright | San Francisco, California |
| 2. Mrs. Patricia Stephens | Baltimore, Maryland |
| Mrs. Zoe Yeager | New Rochelle, New York |
| 3. Marianna Gott | West Los Angeles, California |
| Dorothy Hahn | Los Angeles, California |
| 4. Elizabeth Anselm | Huntington Park, California |
| Mrs. Shirley Blanchet | San Francisco, California |
| 5. Thelma Burdick | Chicago, Illinois |
| Eleanor Coombs | Chicago, Illinois |
| 6. Mrs. Helen Tibbetts | Los Angeles, California |
| Mrs. Loma Smith | Pasadena, California |
| 7. Helen Gibson | South Norwalk, Connecticut |
| Mrs. Wanda Bergman | Fairfield, Connecticut |
| 8. Jean Kirby | San Francisco, California |
| Mrs. Shirley Blanchet | San Francisco, California |
| 9. Mrs. Virginia Suggs | Seattle, Washington |
| Marge Geldseth | Seattle, Washington |
| 10. Ethel Marshall | Buffalo, New York |
| Bea Massman | Buffalo, New York |

MIXED DOUBLES

- | | |
|----------------------------------|----------------------------|
| 1. Mr. and Mrs. Clinton Stephens | Baltimore, Maryland |
| 2. Wynn Rogers | Arcadia, California |
| Mrs. Virginia Hill | Burbank, California |
| 3. David Freeman | Pasadena, California |
| Mrs. Helen Tibbetts | Los Angeles, California |
| 4. Norman Blanchet | Oakland, California |
| Mrs. Shirley Blanchet | San Francisco, California |
| 5. Carl Loveday | Montclair, New Jersey |
| Helen Gibson | South Norwalk, Connecticut |
| 6. Irl Madden | San Francisco, California |
| Mildred Jude | Oakland, California |
| 7. Mr. and Mrs. Richard Yeager | New Rochelle, New York |
| 8. Martin Mendez | San Diego, California |
| Mrs. Loma Smith | Pasadena, California |
| 9. George Harman | Ponca City, Oklahoma |
| Jeanette Summers | Ponca City, Oklahoma |
| 10. Robert Williams | Niagara Falls, New York |
| Ethel Marshall | Buffalo, New York |

VETERANS' DOUBLES

- | | |
|----------------|-----------------------------|
| 1. Fred Fullin | Wilson Point, Connecticut |
| Frank Hinds | New York, New York |
| 2. Hulet Smith | Pasadena, California |
| Lewis Rulison | Pasadena, California |
| 3. Eugene Elms | Los Angeles, California |
| C. C. Mullin | Manhattan Beach, California |

Junior Rankings

BOYS' DOUBLES

- | | |
|--|--|
| 1. William Kellogg
Wilbur Bullen, Jr. | Glencoe, Illinois
Waban, Massachusetts |
| 2. Jack Taylor
Don Brown | Winnetca, Illinois
University City, Missouri |
| 3. Robert Wentworth
John Collom | Baltimore, Maryland
Baltimore, Maryland |
| 4. James Taylor
John Haldi | Atlanta, Georgia
Atlanta, Georgia |
| 5. Gerald Cobb
Winslow Cobb | Weston, Massachusetts
Weston, Massachusetts |
| 6. Randy Rice
James Hamilton | Niagara Falls, New York
Niagara Falls, New York |
| 7. Ronnie Ryan
T. Graham Ralph | Oakland, California
Danielson, Connecticut |
| 8. Peter Sherwood
James Woods | Westport, Connecticut
Norwalk, Connecticut |

GIRLS' DOUBLES

- | | |
|-------------------------------------|--|
| 1. Barbara Scarlett
Susan Devlin | Baltimore, Maryland
Baltimore, Maryland |
| 2. Marilyn Banks
Judy Devlin | Burbank, California
Baltimore, Maryland |
| 3. Sidney Peard
Mary Agnes Moore | Baltimore, Maryland
Baltimore, Maryland |
| 4. Diane Vogt
Dorothy O'Neil | Stamford, Connecticut
Norwich, Connecticut |
| 5. Jean Billow
June Percy | Glencoe, Illinois
Bronxville, New York |
| 6. Barbara Grandy
Sandra Hardin | Atlanta, Georgia
Atlanta, Georgia |
| 7. Joan Abbott
Sandra Costello | Weston, Massachusetts
Brockton, Massachusetts |
| 8. Janet Emeneger
Nancy Rehnberg | Fairfield, Connecticut
Fairfield, Connecticut |

BOYS' SINGLES

- | | |
|-----------------------|----------------------|
| 1. Ronnie Ryan | Oakland, California |
| 2. Wilbur Bullen, Jr. | Waban, Massachusetts |
| 3. Jack Taylor | Winnetca, Illinois |
| 4. William Kellogg | Glencoe, Illinois |
| 5. John Collom | Baltimore, Maryland |
| 6. Robert Wentworth | Baltimore, Maryland |
| 7. Howard Herbst | Baltimore, Maryland |
| 8. John Haldi | Atlanta, Georgia |

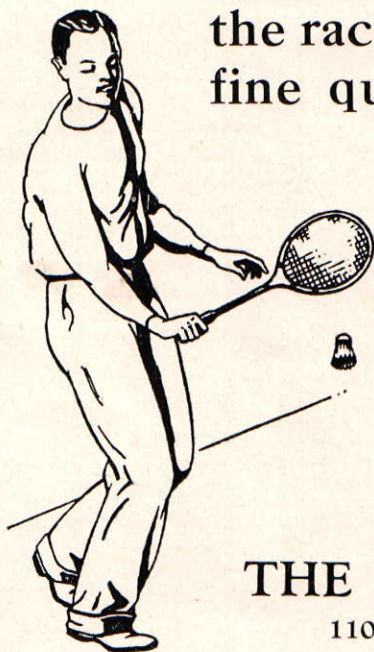
GIRLS' SINGLES

- | | |
|---------------------|-----------------------|
| 1. Barbara Scarlett | Baltimore, Maryland |
| 2. Marilyn Banks | Burbank, California |
| 3. Dorothy O'Neil | Norwich, Connecticut |
| 4. Susan Devlin | Baltimore, Maryland |
| 5. Judy Devlin | Baltimore, Maryland |
| 6. Diane Vogt | Stamford, Connecticut |
| 7. Joan Abbott | Weston, Massachusetts |
| 8. Paula Jewell | Bradford, Vermont |

MIXED DOUBLES

- | | |
|---|--|
| 1. Marilyn Banks
Ronnie Ryan | Burbank, California
Oakland, California |
| 2. Barbara Scarlett
Wilbur Bullen, Jr. | Baltimore, Maryland
Waban, Massachusetts |
| 3. Dorothy O'Neil
Jack Taylor | Norwich, Connecticut
Winnetca, Illinois |
| 4. Diane Vogt
Don Brown | Stamford, Connecticut
University City, Missouri |
| 5. Judy Devlin
Robert Wentworth | Baltimore, Maryland
Baltimore, Maryland |
| 6. Susan Devlin
John Collom | Baltimore, Maryland
Baltimore, Maryland |
| 7. Sandra Hardin
John Haldi | Atlanta, Georgia
Atlanta, Georgia |
| 8. Deedy McCormick
James Woods | Westport, Connecticut
Norwalk, Connecticut |

In tournament playing **JUNEMAN'S**
Badminton Gut Strings are conspicuous in
the rackets of leading players because of the
fine quality essential to a winning game.



Ask for them in your next restringing job
and see your game improve.

Available in a wide range of colors and
seasoned for best court performance.

Ask Your Pro.

Send for free booklet — "Badminton and Tennis Strokes"
written by well known authorities.

THE E. P. JUNEMAN CORPORATION

1102 WEST 47th PLACE

CHICAGO 9, ILLINOIS

"Veteran" Fullin Wins 4 Titles in Conn. Waterbury Holds 9th Annual and County Events

Fred Fullin of Westport, coholder of the 1948 National Veteran's Doubles, belied his years as he "tottered" to 4 titles during the playing of the Connecticut State Championships held at the New Haven Y.M. and Y.W. April 17, 18.

Helen Gibson and Mrs. Wanda Bergman, former U. S. Doubles Champions, retained their state Ladies' Doubles title as did Mrs. Eleanor Raymond in the Ladies' Singles and Joe Cuseo in the Veterans' Doubles.

RESULTS

Men's Singles

Fred Fullin def. James Danaher, 15/4, 15/3.

Ladies' Singles

Eleanor Raymond def. Josephine Goodmaster, 11/9, 11/2.

Men's Doubles

Fullin-Kenneth Kost def. Wm. Chapman-Walter Raymond, 15/7, 15/7.

Ladies' Doubles

Helen Gibson-Wanda Bergman def. Eleanor Raymond-Elizabeth MaFucci, 15/6, 15/11.

Mixed Doubles

Fullin-Bergman def. Mr. and Mrs. Walter Raymond, 15/3, 15/7.

Veterans' Doubles

Fullin-Joe Cuseo def. Donald Hersam-Al Vogt, 15/4, 15/7.

New champions were crowned in all of the Class B events held at the same time as the Championships. Prominent in the winners were two of the leading girl juniors of the country, Dorothy O'Neil and Diana Vogt.

RESULTS

Men's Singles

Howard Hopkinson def. James Patterson, 9/15, 15/13, 18/14.

Ladies' Singles

Dorothy O'Neil def. Alice Jones, 11/5, 11/6.

Men's Doubles

Harry Seigan-Donald Remer def. Edward Janis-George Reid, 15/3, 11/15, 15/6.

Ladies' Doubles

Evelyn Vogt-Diana Vogt def. Dorothy O'Neil-Florence Aubrey, 17/14, 15/9.

Mixed Doubles

Hopkinson-Marian Sandin def. Norman MacInnis-Elaine Harris, 15/17, 15/6, 15/2.

Waterbury Tournaments

The 9th Annual Championships of Waterbury were held at the Central Y. M. C. A., April 1, 2, 4 in both Class A, B and C Divisions.

RESULTS

Class A

Men's Singles

James Lockwood def. Joseph Sullivan, 15/2, 4/15, 15/2.

Men's Doubles

Harry Anderson-Edward Drab def. Carl Toothaker-Charles Welch, 15/12, 15/13.

Mixed Doubles

Joseph Sullivan-Marian Sandin def. Jim Lockwood-Lena Caffrey, 15/7, 6/15, 17/14.

Class B

Men's Singles

William Stahl def. Harold Allen, 15/7, 15/5.

Ladies' Singles

Kay Sullivan def. Marian Sandin, 11/9, 11/8.

Men's Doubles

Wm. Stahl-Harold Allen def. Dr. Ray Clemente - Matthew Holloway, 15/9, 15/3.

Ladies' Doubles

Marian Sandin-Carolyn Beardsley def. Kay Sullivan-Norma Widen, 15/7, 15/11.

Mixed Doubles

William Fleming-Kay Sullivan def. Matthew Holloway-Carolyn Beardsley, 15/6, 10/15, 15/5.

Class C

Men's Singles

Lewis Dibner def. John Camfield, 15/6, 15/7.

Ladies' Singles

Mrs. William Caney def. Helen Pillis, 11/1, 11/6.

Men's Doubles

Thomas Dillon-Larry Sarni def. Frank Hayes-Stowell Burnham, 12/15, 17/14, 15/10.

Ladies' Doubles

Mrs. William Caney-Dorothy White def. Kitty DelGaizo-Mary Slavin, 15/9, 15/11.

Mixed Doubles

Frank Hayes-Mrs. William Caney def. Norman Schaeffer-Helen Pillis, 15/1, 15/9.

The New Haven - Litchfield-Hartford County C. Tournament was likewise held in Waterbury at the Bristol Company on March 22, 23, 24, 27.

RESULTS

Men's Singles

Noel Fehm def. Joe Pichulo, 18/14, 17/16.

Ladies' Singles

Catherine Robertson def. Barbara Vasko, 5/11, 11/8, 11/6.

Men's Doubles

Nelson Dodge-Noel Fehm def. Larry Sarni-Tom Dillon, 15/9, 15/10.

Ladies' Doubles

Edith DeBonis-Audrey Tiani def. Catherine DelGaizo-Mary Slavin, 15/8, 6/15, 15/9.

Mixed Doubles

Noel Fehm-Catherine Robertson def. John McNamara-Edith DeBonis, 15/5, 18/17.

Correspondents — Howard P. Sharp, Joseph F. Sullivan, Richard C. Davenport

Tenney Retains Title in Texas State Tourney

Eugene Tenney, of Baylor University, successfully defended his title in Men's Singles in the annual Texas Badminton Association's Open Tournament, which was sponsored by the Houston Badminton Club and held in the Public School Field House at Houston, Texas, on April 23 and 24, 1948.

A new champion was crowned in Ladies' Singles when Margaret Varner, of Texas State College for Women at Denton, won over Abbie Rutledge, in the finals. Miss Varner has been the number one ranking player in tennis in the state the past several years, but this was her first victory in badminton. She also teamed with Miss Rutledge to take the Ladies' Doubles crown.

The Houston Badminton Club won the team award — the Lowell N. Douglas Memorial Trophy — by nosing out the Baylor Club 241 points to 223½. This was a beautiful 30" trophy which was contributed by the various Texas clubs in memory of the late Dr. Lowell N. Douglas of Baylor, who was the first organizer of badminton in this state. The points made by other clubs contesting for this award were as follows: Dallas, 153½; T.S.C.W., Denton, 112; Austin, 100; Huntsville, 37; Nacogdoches, 35; and San Antonio, 33.

At a business meeting held during the tournament new officers of the Texas Badminton Association were elected for the ensuing year as follows: Lloyd Russell, of Baylor, President, and Kay Mitchell, Secretary and Treasurer. Resolutions were passed expressing the Association's appreciation to the retiring President — Nick Roberts, and to the retiring Secretary and Treasurer — Paralee Lander, for their splendid and efficient services rendered during their two year term of office.

RESULTS

Men's Singles

Eugene Tenney def. Joseph Garland, 15/4, 15/3.

Ladies' Singles

Margaret Varner def. Abbie Rutledge, 11/4, 11/4.

Men's Doubles

Tenney-Nick Roberts def. Bill Menefee-Garland, 15/11, 15/7.

Ladies' Doubles

Varner-Rutledge def. Kay Mitchell-Dorothy Lander, 2/15, 15/2, 15/6.

Mixed Doubles

Roberts-Lander def. Menefee-Mitchell, 15/12, 15/6.

Men's Esquire Doubles

Floyd Aston-Bob Drye def. Walter Wukasch-Gordon Mills, 15/4, 18/16.

Correspondent — F. D. Aston

SUPPORT BIRD CHATTER
Mail Your Subscription Today

Mendez Edges Mitchell at San Diego Alston-Murphy Surprise in Doubles



A group of San Diego's comely badminton devotees pose outside the Municipal Gym on the steps of the Ford Bowl. L to R, Leah Skelley, Joyce Sinclair, Ann Howe, Pat Gallagher, Lois Smedley and Carol Jennings.

Martin Mendez continued his conquest of Pacific Coast Badminton Championships at the Annual San Diego County Tournament in Balboa Park's Municipal Gym on April 23, 24, 25 by defeating his old rival, Dick Mitchell, in a blistering 18/17, 14/17, 18/16 contest. The

match, deuced in all three games, was the closest men's singles final ever played between these two, third and fifth 1947 ranked in the United States, respectively.

Sponsored by the San Diego Recreation Department and conducted by the very active San Diego Badminton Association under President Leah Skelley, the tournament produced many intensely close matches and some top-notch badminton for some 1,000 spectators. Eileen Hague retained her County title with ease in Ladies' Singles, defeating former City champion, Jean Creelman, 11/1, 11/2. The Men's Doubles featured the return to form of John Murphy, a nationally-ranked star in pre-war days, as this veteran shuttle campaigner and Joe Alston subdued the strong duo of Mendez and Mitchell, 15/8, 15/6. Miss Skelley and Ruth Jett copped the Ladies' Doubles in hard-fought 6/15, 15/12, 18/15 sets over Lois Smedley and Carol Jennings.

Miss Jett and John McCormick made a sensational come back in the Mixed Finals to trip Alston and Miss Smedley, 7/15, 15/8, 18/14.

RESULTS

Men's Singles

Martin Mendez def. Dick Mitchell, 18/17, 14/17, 18/16.

Ladies' Singles

Eileen Hague def. Jean Creelman, 11/1, 11/2.

Men's Doubles

Joe Alston-John Murphy def. Mitchell-Mendez, 15/8, 15/6.

Ladies' Doubles

Leah Skelley-Ruth Jett def. Lois Smedley-Carol Jennings, 6/15, 15/12, 18/15.

Mixed Doubles

John McCormick-Ruth Jett def. Joe Alston-Lois Smedley, 7/15, 15/8, 18/14.

B Flight

Men's Singles

Bill Berry def. Rick Pierce, 18/16, 18/13.

Ladies' Singles

Helen Smith def. Patsy Forsyth, 6/11, 11/9, 11/7.

Men's Doubles

Bob Bates-Rick Pierce def. Bill Berry-Joe Werley, 15/9, 18/13.

Ladies' Doubles

Adele Tinning-Mrs. Charles Mattinson def. Martin-Franck, 15/7, 15/7.

Mixed Doubles

Ralph Trembley-Joan Wolf def. Stella Thudium-Joe Carter, 15/12, 12/15, 15/12.

Correspondent — Ralph Trembley

Ken Davidson SAYS . .

he drive more often becomes a winning shot when powered by the speed of VICTOR Strings that Win.



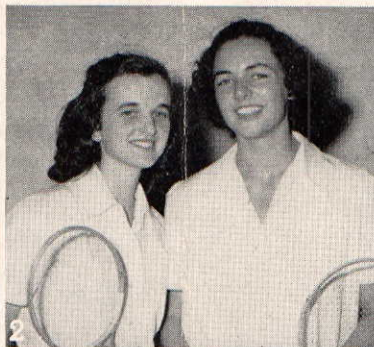
VICTOR

Strings that Win

VICTOR SPORTS, INCORPORATED
4501 PACKERS AVE., CHICAGO 9, ILLINOIS, U. S. A.



First Southern California Junior Championships



Left to right—1. Gaynold Graichen, Ruth Young, Jean Gibbs, Joan Gibbs; 2. Marilyn Banks, Terey Dunn; 3. Tom White, Jim Bishop; 4. Don Miller, Bob Pitman; 5. Jack Ebey, Steve Hinchliffe, Ronnie Miller, Don Miller; 6. Tom White, Jim Bishop, Don Miller, Dick Wineland and girl friend.

Ushering in the first Junior Championships under the direction of the Southern California Association, 92 boys and girls have made a real start in their quests for competitive standing.

The Pasadena Badminton Club was the scene of the event, May 21, 22, and capable Wynn Rogers not only led an array of officials but also assisted Ken Davidson in an amusing exhibition for the children.

RESULTS 18 and Under

Boys' Singles

James Bishop def. Tom White, 15/5, 15/4.

Girls' Singles

Marilyn Banks def. Terry Dunn, 11/0, 11/6.

Boys' Doubles

Don Miller-James Bishop def. Dick Wineland-Tom White, by default.

Girls' Doubles

Jean and Joan Gibbs def. Ruth Young-Gaynold Graichen, 15/7, 15/3.

Consolation

Boys' Singles

Robert Leonard def. Dick Huyck, 15/0, 15/0.

Girls' Singles

Stuart McKenna def. Marilyn Miles, 11/8, 11/7.

Boys' Doubles

Robert Cooper-Robert Leonard def. William Seeley-Robert Reid, 15/6, 15/11.

Girls' Doubles

Stuart McKenna and Lois MacBird def. Berly Brace-Clarita Stone, 15/9, 15/7.

RESULTS

15 and Under

Boys' Singles

Bob Pitman def. Don Miller, 11/4, 11/0.

Girls' Singles

Joan Gibbs def. Jean Gibbs, 12/9, 11/1.

Boys' Doubles

Ronnie and Don Miller def. Steve Hinchliffe-Jack Ebey, 15/8, 15/11.

Girls' Doubles

Jean and Joan Gibbs def. Joanne Rogers-Carole Elam, 15/1, 15/1.

Consolation

Boys' Singles

Michael Hartgrove def. Gordon Hern-don, 11/2, 11/3.

Girls' Singles

Mary McMurray def. Natalie Koch, 11/2, 11/0.

Boys' Doubles

Gary Dalzell-Clark Webb def. Donald Forest-Gary Shaar, 15/0, 15/7.

Girls' Doubles

Marilyn Neal-Betty Takenouchi def. Peggy Paden-Leonore Bailly, 10/13, 11/8, 11/4.

Correspondent — Virginia Hill

All Entry Records Broken at Western New York Junior Tournament

The third Junior and Juvenile Tournament of the Western New York Badminton Association held April 24 at the Bennett High School broke all previous records with 188 event entries.

The Ethel Marshall Trophy for Junior Girls' Singles and the Bobby Williams Trophy for Junior Boys' Singles were won by Esther Szulist of Buffalo and Randy Rice of Niagara Falls.

Juniors — 16 to 18

Boys' Singles

Randy Rice (NF CC) def. Mike Reuther (East Aurora) 15/9, 11/15, 15/9.

Boys' Doubles

Mike Reuther and Don Wechter (East Aurora) def. Randy Rice and Jimmy Hamilton (NF CC), 15/2, 15/10.

Girls' Singles

Esther Szulist (Girls Voc. H.S.) def. Ann Mack (NF CC) 11/3, 11/2.

Girls' Doubles

Ann Mack (NF CC) and Joe Ferraraccio (Girls' Voc. H.S.) def. Esther Szulist

and Dolores Zintek (Girls' Voc. H.S.) 15/12, 18/15.

Juveniles — Up to 16

Boys' Singles

Anthony Paul (18-Hi) def. Robert Rice (NF CC), 15/6, 17/15.

Boys' Doubles

Joseph Tasca and Anthony Paul (18-Hi) def. John Daggett and Robert Rice (NF CC) 15/9, 15/7.

Girls' Singles

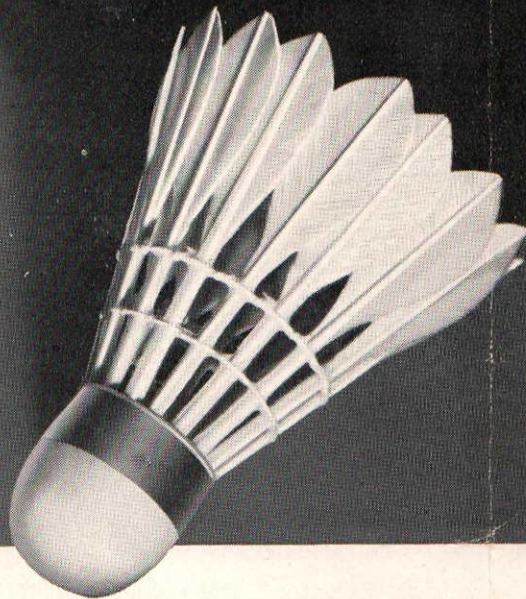
Ann Harvey (NF CC) def. Janet Mack (NF CC), 11/2, 11/4.

Girls' Doubles

Ann Harvey and Patricia Buell (both NF CC) def. Janet Mack and Suzanne Belden (both NF CC), 15/8, 15/7.

Correspondent — Del Allenburg

The **NEW** **WILSON SHUTTLECOCK**



*Unsurpassed
for
durability*

FOR BLISTERING KILLS

*or tantalizing drop shots that catch them
flat-footed.*

- Finest tournament grade.
- Triple stitched.
- Meets championship specifications.
- Selected kid base.
- 16 top-grade, white goose feathers.
- Pointed tips.

Approved by the A. B. A. Adopted for the 1948 National Junior Championships.

Wilson

The **LAST WORD** in
BADMINTON EQUIPMENT



WILSON SPORTING GOODS CO. • Chicago, New York and other leading cities (A Wilson & Co., Inc. subsidiary)

IT'S WILSON TODAY IN SPORTS EQUIPMENT

Quality
carries on



Drink

Coca-Cola

TRADE-MARK

Delicious and
Refreshing