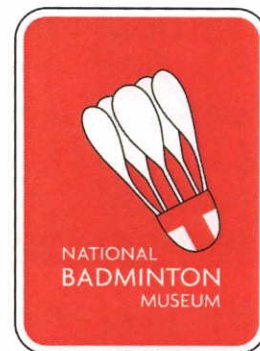


Newsletter



Issue No. 8

Registered Charity 1118059
Supported by Badminton England

Contents

- | | |
|------------------------------|---|
| 1. An item from the Chairman | 8. New Cabinet |
| 2. The Trustees | 9. Visit to Badminton House |
| 3. Membership | 10. Our presence at events |
| 4. Progress | 11. Recent visitors |
| 5. Finance | 12. Acknowledge Jill's work on
Issues 1 to 7 |
| 6. Recent Acquisitions | 13. The website |
| 7. Books for sale | |

Chairman's note

2011 has been a year of two steps forward and one step back. We had hoped to move the office to the garage where extra space was available but this would have required quite serious modifications and the project was shelved. We are therefore still very short of good quality storage space. Despite this, steady progress has been maintained in improving the Museum collection of memorabilia and we now have probably the best range of badminton rackets and shuttles in the country if not the world. This is continually being updated with new innovations/limited editions. We also received a large collection of interesting artefacts from Heather Nielsen for which we were most grateful.

We do always try to have a presence at the Association's special events but this very much depends on the space available and whether they can sell that space to sponsors. There was no space at last year's Yonex All England Championships but we had a free advert in the programme and our display unit was at the Yonex World Championships at Wembley in August.

This coming year we intend to start a new improved catalogue system under the supervision of our consultants Maria and Chris Newberry who are museum professionals. We also need to change/improve the displays in the cabinets and this will be accomplished during 2012.

Bill Andrew
Chairman, National Badminton Museum

The Trustees of the National Badminton Museum

Bill Andrew, Chairman of NBM
The President of Badminton England
Chairman of Council of Badminton England

Jill Brill, Hon Sec NBM
Geoff Hinder, represents the Friends

National Badminton Museum

Membership - The number of Friends of the Museum has remained static and it would be lovely to have more badminton enthusiasts supporting the history of the great sport of Badminton. As well as individual members there is an annual membership available to counties, clubs and associations more information available on the website.

Progress – The Trustees and Working Group continue to improve the collating and recording of items to ensure that the Museum's collection is recorded and stored with integrity. The main concern at present is the space available to maintain the collection in the correct environment.

Finance - To maintain the Museum on we are reliant on our Friends and donations and the very generous support of Badminton England.

Recent Acquisitions

Hazell Streamline Blue Star racket



c1935

The Museum has received several donations over the last twelve months and the following are just a few of the items received

Collection of ceramics from Heather Nielsen

2012 Olympic coins and stamps

Lin Dan's shoe from Peter Gardner

All are welcome additions to the Museum

Battledore shuttlecock



c1870

F.H. AYRES Regulation shuttlecock



c1910

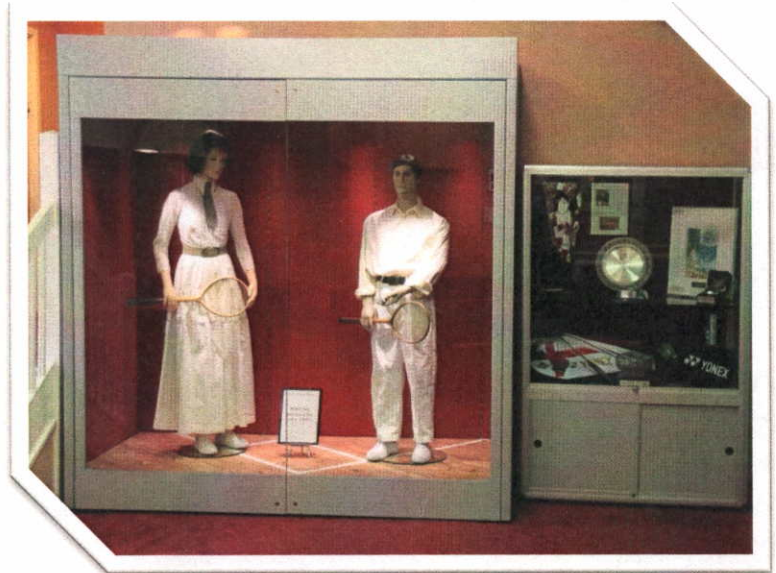
Books for Sale - The Museum has a large and comprehensive collection of books covering all aspects of Badminton. Books have been generously donated to the Museum and we now have a collection of duplicates of several books and will be offering these for sale on the Website shortly.

National Badminton Museum

New Cabinet

The display cabinet was a major new addition to the museum together with the mannequins and has attracted a lot of attention. It is sealed so that dust will not get in and the lighting emits low energy to keep the correct humidity.

Work has also been carried out on the other display cabinets to improve the sealing to omit dust.



National Badminton Museum visit to Badminton House

On Thursday, 28 July 2011 31 'Friends' of the National Badminton Museum met for lunch at a hotel in South Gloucestershire before proceeding for their visit to Badminton House.

Their guide for the afternoon was John Harris who is the architectural historian for the house.

The visit started in the North Hall where it was claimed in 1863 a piece of string was placed across the Hall and the game of badminton was invented by military friends of the 8th Duke of Beaufort, who had played a version of the game in Poona, hence the standard size of a badminton court is that of the Hall.



The Friends were shown round many other parts of the house where they saw the two famous Canaletto paintings c1750 of Badminton House. The visit also included being shown round the gardens and church. The visit ended with tea and cakes in the kitchen restaurant.

This year's visit to Badminton House will be on Thursday 12 July 2012.

National Badminton Museum

Our presence at events

The National Badminton Museum had its display stand at the **Yonex BWF World Badminton Championships** 8th to 14th August 2011 at Wembley Arena, London (this will be the Olympic venue for Badminton).



Our Sporting Life Exhibitions - In the build up to the London 2012 Olympic and Paralympics Games, Our Sporting Life is staging a nationwide programme of exhibitions that will bring together from all over the country objects, stories and photographs that tell the story of Great British Sports. We have contributed to the exhibitions and displays in Milton Keynes and are offering support to other events in England. At the MK Dons Stadium there is currently an exhibition on view in the Pitchside Bar, Doubletree Hilton until 30th April which can be viewed at any time.

Heritage Open Day – In 2011 the Museum again took part and staged a special open day as part of the Milton Keynes Heritage programme, our event included a display of some of the DVDs that have been produced from old archive films. We were also able to have on show items that are not on permanent display. The date for 2012 is Saturday 8th September.

Visitors – We again opened up the Museum Office for extra days during the Yonex All England and Yonex BWF World Badminton Championships in order to entertain overseas visitors. There were school visits together with the Heritage Open Day resulting in a significant increase in overall visitor numbers for 2011.

Acknowledgement to Jill

Jill Brill has written our Annual Newsletter for 7 Editions and has now passed the baton (shuttle) to Richard and Lesley Selley.

As she is reluctant to sing her own praises I think we should acknowledge all she has done for the Museum since it's creation in 2003, indeed her involvement went even further back to 1997 when she joined Margaret Cook as the second archivist for the Badminton Association for many years. Jill is doing sterling work keeping the Museum running on a day to day basis answering thousands of phone calls and emails and wearing out Watling Street with her weekly commute to Milton Keynes. *Richard Selley Editor*

Website

www.museum@badmintonengland.co.uk

The museum website is regularly updated and Advertises all the open days and special exhibitions.

Contact :
National Badminton Museum
National Badminton Centre
Milton Keynes MK8 9LA
Tel 01908 268400 Fax 01908 268412
Email museum@badmintonengland.co.uk





**ISSUE NUMBER 6, January 2010,
COVERING 2009**

We were very sorry to learn that Stan Marchment wished to stand down as a Trustee and also a member of the volunteers during the year. Stan made a considerable contribution to the present set-up as we gained charity status, and also made useful contributions to our listings, which are in continual use.

2009 Appeal

We would like to thank all of you who contributed to the 2009 appeal to purchase a floor to ceiling cabinet which it is hoped will be placed in the National Badminton Centre and filled with dummies dressed as early badminton players. This will be quite an expensive project and we have therefore decided to extend this appeal for another year, and are taking the liberty of enclosing a form for you to make a donation if that is your wish.



The above is the sort of thing we have in mind, but it would be at least twice as wide.

Friends of the Museum

At the beginning of 2010 we have 145 Friends. This is an area we must develop as it could be a very useful source of income - after all other charities are continually begging for our money!! To this end we have introduced a new membership relating to counties, clubs and other associations - we have already contacted all counties and we have one club signed up. If you have an opportunity please promote the museum in your county, club, etc. Forms are available from the office or can be downloaded from our website pages.

We are enclosing a form for individual friends in the hope that you can persuade a badminton colleague to sign up - please help - we really do need more cash to move forward.

Museum Website

Have you found our pages on the BE website. We have posted quite a lot of information and try to add something each week - this will give us a chance to keep in touch and we will welcome feedback.

Communicating with you

We would like to introduce the ability to communicate with Friends via e-mail. If you are happy for us to use your e-mail address, please let us know using - museum@badmintonengland.co.uk

Our presence at MK Heritage Event

We started the year off by taking part in the above which is held in Middleton Hall in the Shopping Centre. Geoff and Lesley were on hand to show off our display stand with 6 new panels. Co-operating with Shane Downer the panels tell the story of badminton with pictures - we are grateful for the financial support of MK Heritage. These panels are now available for future use.

Visit to Badminton House



The museum arranged a second visit to Badminton House on August 22nd which proved very popular and successful. It is hoped to be able to

arrange another visit during 2010 which will again be restricted to Friends of the Museum.

Open Day, September 12th 2009

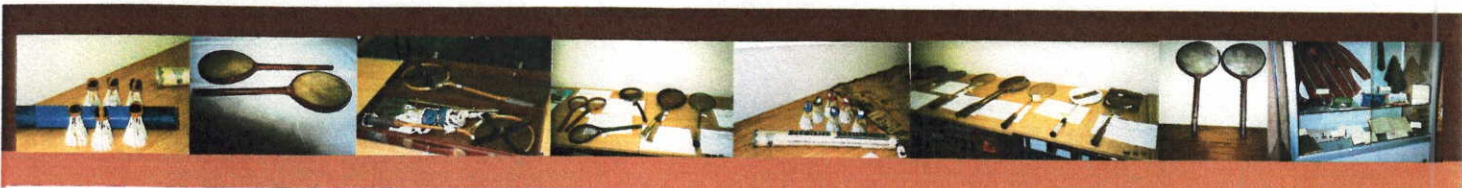
We again participated in the English Heritage Open Days held over all over the country and estimate that about 70 visitors attended coming from as far away as Cheshire, Sussex and Gloucestershire.

In addition to exhibits normally on display extra material was available, and visitors had the opportunity of viewing DVD's of former events and footage covering parts of the history of badminton.

Some visitors now look upon Open Day as a chance to renew old acquaintances, and the museum was pleased to receive items donated to our collections.

We hope to join up with Milton Keynes and English Heritage and join them in their next Open Days which will be on Saturday September 11th 2010.

Make a note of the date in your diary, now!!



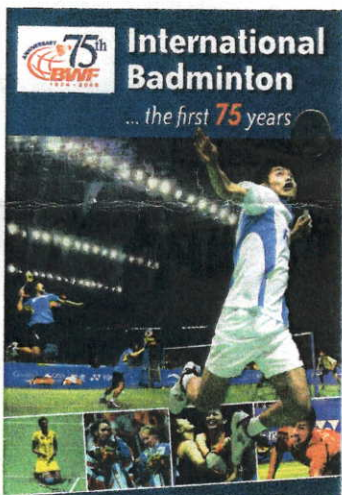
Acquisitions for the Museum in 2009



One of the most interesting items we have acquired for the Museum is a scrapbook put together by Queenie Allen when she visited South Africa with the England team in 1948.

Many other items have been received including racquets, shuttlecocks, medals won by the England team at the Sudirman Cup and European Team Championships, stamps, a magnifying glass on a chain dated 1912 which we think was probably a prize at a badminton tournament, shuttle master and books.

The most recent acquisition in the museum has been a copy of the WBF book published to celebrate the first 75 years of international badminton. It was donated by the WBF as we assisted with the production of the book. I am sure this will be of great interest to anyone interested in the history of badminton and become an important reference book on badminton.



Information Service and Enquiries & Sales

We continue to deal with enquiries which come from all over the world. Families of past players come to us for information and copies of programmes or pages from the records including the magazines. This is an area that continues to expand.

We provided photographs of past players which were used on the posters for the 100th Yonex All England.

DVD's Collection

Volunteers continue to transfer videos and film onto DVD's as a more satisfactory means of storing the history of badminton. This is time consuming project, but should prove very worth while.

Visitors to the Museum

We continue to welcome visitors from far and wide - Melbourne and Boston, USA being two of the most distant - also a party of school children from Hastings who came unannounced and were fitted in with a very brief tour. We were delighted



to welcome Sue Peard and Judy Hashman to the museum in July - they spent the day with Jill and Lesley talking badminton!!

Museum Volunteers

The museum working party consisting of nine volunteers are responsible for the day to day running of the museum, and we could move forward so much more quickly if we could enlist more help - particularly from folk who live nearby.

Can we persuade anybody to come and join us - if you have any expertise that can be used, please give us a call - we are particularly short of persons able to assist with display work. Even more important is the need to increase income - is there anyone with expertise on applying for grants and dealing with the paperwork involved willing to come and help.

Leaving a gift to the Museum

Many museums are able to increase funds from legacies - making a will and including a gift will assist us in our programme to preserve the history of badminton for all. The generous legacy already received has really made a great difference to our planning and progress.

Our thanks to all who have supported us over the past twelve months - with your help and interest we look forward to the start of another year and decade.

Jill Brill, Hon. Secretary, National Badminton Museum. Milton Keynes.



**ISSUE NUMBER 7, January 2011,
COVERING 2010**

Museum Governance

Most Friends of the Museum will be aware that Mike Sertin, Chairman of Council died suddenly during the 100th All England Championships in March. As Chairman of Council, he was an *ex officio* trustee of the museum, and we would like to record our thanks for his support during the three years that he served as a Trustee. Another *ex officio* member of the Trustees was John Havers, President of Badminton England, - he was required to stand down after serving six years - and again our thanks to him for his interest and support. Their departure means that we have welcomed two new Trustees, namely Derek Batchelor and Geoff Rofe, and we look forward to having them on board as new Trustees.

We would like to record our thanks to the volunteers who give their time and keep the museum operating.

Museum Cabinet dedicated -

Many of you will be aware that Anders Nielsen, former international player and National Champion died during the year leaving a widow and two young children. His parents Heather and Egon were anxious that there should be a cabinet in the museum dedicated to Anders. Heather has contributed in many ways to the establishment of the museum, and we are pleased to record our thanks for this new venture - the plaque is already in place, and shortly the cabinet will include new items.

Friends of the Museum

At the beginning of 2011 we have 154 Friends. This shows a very small increase over twelve months which must be regarded as disappointing. As this is an important way of generating income we need to enrol more Friends - we would appreciate if all present Friends could persuade badminton colleagues to join us! We have also introduced another category of membership - this is for counties, clubs, associations, etc. - can you persuade your county or club to donate £20 - forms are on the website, available in the rack in the NBC or from the office.

All England Championships 2010

The All England Championships of 2010 were special being the 100th occasion that they have been played.

The museum was present on the concourse and new display units purchased were on show for the first time.

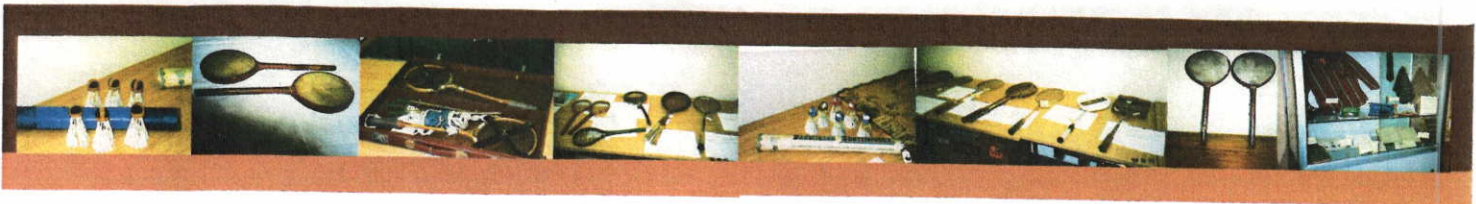


The stand was manned throughout by museum volunteers and we were assisted by other badminton enthusiasts, to whom we are very grateful. The display units will be available for future events.

We were delighted when the winning four Chinese players kindly donated the shirts worn during the finals to the museum.

We were able to take books normally available on sale through the museum including *International Badminton - the first 75 years*, and *Between the Covers* by Graham Dixon. Both make excellent reading and are available from the museum via the website or from the office.

We were approached by some visitors to the All England who wished to visit the museum and we welcomed a party from Yonex, a party from the Chinese management at Birmingham and a German press representative. As a result we are making arrangements for the museum to be manned during the Championships of 2011 and if visitors contact us before visiting, we will make every effort to have someone in the museum to welcome them and show them round..



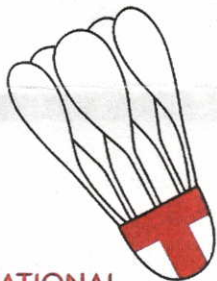
New Cabinet purchased

During the year a new floor to ceiling cabinet was purchased which is situated near the museum office. It was financed mainly from the Audrey Dance legacy, supplemented by donations from Friends to the special appeal for 2010, we would like to thank all of you who contributed.

Open Day - September 11th 2010

We participated in Open Days arranged by Milton Keynes Heritage and English Heritage throughout the country. Attendance was disappointing compared with previous years, but those attending including one visitor from Aberdeen indicated that they enjoyed the day.

New Museum Logo



**NATIONAL
BADMINTON
MUSEUM**

Working with Badminton England, the museum adopted a new logo prior to the All England. It incorporates a barrel shuttle as used in the early 1900's.

It has caused comment as many folk have not heard of barrel shuttles!

Museum Website

The museum has pages on the Badminton England website and throughout the year we have been able to add some item, a short piece of history, profile of early players, etc. every week of 2010 - we are anxious to keep continuity and trust folk are looking for an update every week, Tuesday is the day to look for the latest snippet of news. You can only access the museum pages through the Badminton England homepage, then click on Badminton England, and then National Badminton Museum.

Visit to Badminton House

The museum organised another trip to Badminton House for Friends of the museum in August - this was again well supported.

Interest from the Media

We were approached by Big Earth Productions who are a television production company, and preparing a series for the channel Blighty about the history of British sports. We understand that four sports will feature in each programme lasting an hour and badminton is to be included. We will update you via the website, but transmission is likely to be in February. They spent some time recording in November, and we will share the badminton slot with the international players.

We had a short piece on Three Counties Radio prior to Open Day.

The Royal Horticultural Society is publishing a book in the Spring about the Horticultural Hall which will include material concerning the All England Championships held in the Hall from 1910 until 1939.

The induction of Ethel Thomson into the WBF Hall of Fame was marked at the All England, and covered by the press - the museum was approached by Reuters to assist with an article they produced.

Acquisitions by the Museum in 2010

We continue to receive donations of memorabilia and other items, and have also purchased several items. We received a trophy won by Ralph Nichols kindly donated by his widow Elisabeth. He was the last English man to win the men's singles at the All England in 1938 and has a special place in our history.

Our charitable status

May we remind you that we are a Charity and our Friends and their financial support is most important and essential to our efforts to expand. We are not setting up a special appeal for the coming year, but donations are welcome at any time. If you would be interested in leaving a legacy to the museum and need any help in setting this up, our financial team will be pleased to assist. The generous legacy received from Audrey Dance has enabled us to make great strides forward.

All connected with the museum send good wishes for 2011.

Jill Brill, Hon. Secretary, National Badminton Museum. Milton Keynes.